

**AIR1-SM DX**



**Control module DX**

For connecting the control of an AIR1 ventilation unit of the XC, XH and RH series to the control of an on-site cooling system. Various input and output signals from and to the cooling system are available. Note: Necessary accessory in connection with an AIR1-CO DX change-over register.

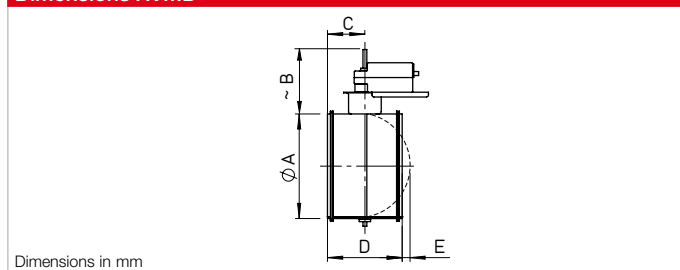
Dimensions (WxHxD): 205 x 255 x 112 mm

Technical data				
Type	Ref. no.	Voltage	Electricity	Ambient temperature.
AIR1-SM DX	40408	230 V AC / 50 Hz	max. 0.33 A	0 to +40°C

**RVMD**



**Dimensions RVMD**



**Motorised duct shutter tight**

Can be installed horizontally and vertically in any position and with mounted spring return motor (outside of air flow). Cable length 0,9 m, normally closed. Corresponds to tightness class 4 to DIN EN 1751.

Technical data						
XHP units	Type	Ref. no.	Shutter opening time, approx.	Ambient temp.	Protection category	Actuator type
AIR1 XHP 750 / AIR1 XHP 1000	RVMD 250/24V	40246	60 s	-32 to +55 °C	IP54	24 V DC, 24 V AC (50/60 Hz), spring return
AIR1 XHP 1500	RVMD 355/24V	40248	60 s	-32 to +55 °C	IP54	24 V DC, 24 V AC (50/60 Hz), spring return
AIR1 XHP 2500	RVMD 400/24V	40249	60 s	-32 to +55 °C	IP54	24 V DC, 24 V AC (50/60 Hz), spring return

Dimensions							
XHP units	Type	Ref. no.	Ø A	B	C	D	E
AIR1 XHP 750 / AIR1 XHP 1000	RVMD 250/24V	40246	250	137	79	158	44
AIR1 XHP 1500	RVMD 355/24V	40248	355	137	126	251	50
AIR1 XHP 2500	RVMD 400/24V	40249	400	137	126	251	72

**AIR1-JVK XH**



**Multi-leaf damper internal**

Multi-leaf damper for preventing cold draughts when the fan is stationary. Framework casing with connection flange on both sides. Counter-rotating blades, with retracted sealing lip. Sealing class 2. Installation inside of unit.

Technical data						
Type	Ref. no.	Runtime (open / closed)	Weight	Ambient temperature	Actuator type	
AIR1-JVK XH 1000	06005	40 ... 75 s	2.5 kg	-30 to +50 °C	24 V DC. spring return	
AIR1-JVK XH 1500/RH 1500	06006	40 ... 75 s	3.0 kg	-30 to +50 °C	24 V DC. spring return	
AIR1-JVK XH 2500/RH 2000	06007	40 ... 75 s	4.0 kg	-30 to +50 °C	24 V DC. spring return	
AIR1-JVK XH 3500-4500/RH 3000	06009	40 ... 75 s	5.0 kg	-30 to +50 °C	24 V DC. spring return	
AIR1-JVK XH 5500/RH 5000-6000	06010	40 ... 75 s	6.6 kg	-30 to +50 °C	24 V DC. spring return	
AIR1-JVK XH 7000/RH 8000	06012	40 ... 75 s	7.8 kg	-30 to +50 °C	24 V DC. spring return	
AIR1-JVK XH 8500/RH 9500	06013	40 ... 75 s	8.6 kg	-30 to +50 °C	24 V DC. spring return	