

**AIR1-KR KW RH**



■ **Cold water cooling register**

For demand-oriented temperature control (cooling) of supply air. Mounting directly to the supply air duct of the ventilation unit including fixing material is possible. Casing in robust panel construction, insulated on all sides with 50 mm mineral wool for the minimisation of heat losses. External corrosion-resistant coating of casing. Large inspection openings on both sides of unit for easy access and optimised cleaning and maintenance. Stainless steel condensate tray with condensate drain outlets. Condensate connection 32 mm. Cooling register suitable for internal and external installation. Note: A weather protection cover is required for external installation.

Recommended accessory: Ball siphon AIR1-KS B (Ref. no. 07169)

Detailed calculations / technical information: [www.AIR1Select.com](http://www.AIR1Select.com)

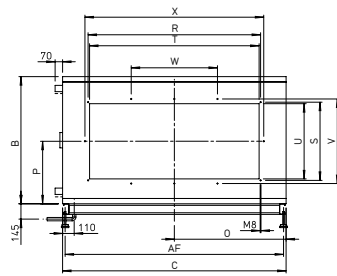
■ **Technical data**

Type	Ref. no.	Version	Water content	Connection flow /return <sup>(1)</sup>	Weight (without liquid)
AIR1-KR KW RH 1500 L	03958	left	1.9 l	G 1/2	66.0 kg
AIR1-KR KW RH 1500 R	04283	right	1.9 l	G 1/2	66.0 kg
AIR1-KR KW RH 2000 L	03959	left	2.6 l	G 3/4	80.0 kg
AIR1-KR KW RH 2000 R	04285	right	2.6 l	G 3/4	80.0 kg
AIR1-KR KW RH 3000 L	03967	left	3.4 l	G 1	101.0 kg
AIR1-KR KW RH 3000 R	04286	right	3.4 l	G 1	101.0 kg
AIR1-KR KW RH 5000 L	03971	left	6.5 l	G 1 1/4	158.0 kg
AIR1-KR KW RH 5000 R	04287	right	6.5 l	G 1 1/4	158.0 kg
AIR1-KR KW RH 6000 L	03976	left	7.0 l	G 1 1/4	180.0 kg
AIR1-KR KW RH 6000 R	04288	right	7.0 l	G 1 1/4	180.0 kg
AIR1-KR KW RH 8000 L	03983	left	13.7 l	G 1 1/2	242.0 kg
AIR1-KR KW RH 8000 R	04382	right	13.7 l	G 1 1/2	242.0 kg
AIR1-KR KW RH 9500 L	03984	left	16.9 l	G 2	270.0 kg
AIR1-KR KW RH 9500 R	04383	right	16.9 l	G 2	270.0 kg
AIR1-KR KW RH 12000 L	04183	left	20.5 l	G 2	313.0 kg
AIR1-KR KW RH 12000 R	04389	right	20.5 l	G 2	313.0 kg
AIR1-KR KW RH 15000 L	04184	left	20.2 l	G 2	380.0 kg
AIR1-KR KW RH 15000 R	04391	right	20.2 l	G 2	380.0 kg

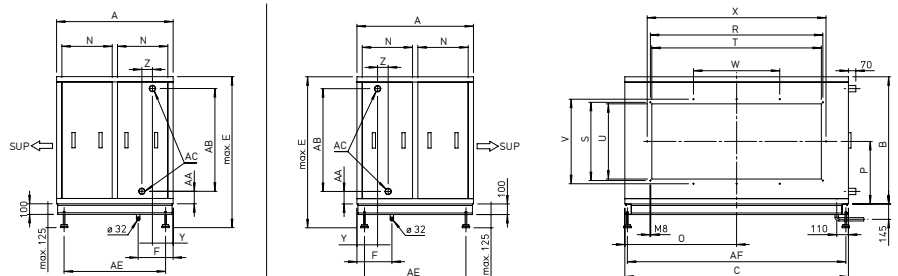
(1) External thread

### Dimensions AIR1-KR KW RH

Version left (L)



Version right (R)



Dimensions in mm

When looking at the cooling register from the air flow direction, the service side is on the right for the R version and on the left for the L version.

■ Dimensions												
Type	Ref. no.	A	B	C	E	F	N	O	P	R	S	T
AIR1-KR KW RH 1500 L	03958	1000	520	760	745	306	425	380	265	378	338	350
AIR1-KR KW RH 1500 R	04283	1000	520	760	745	306	425	380	265	378	338	350
AIR1-KR KW RH 2000 L	03959	1000	580	860	805	306	425	430	295	498	338	470
AIR1-KR KW RH 2000 R	04285	1000	580	860	805	306	425	430	295	498	338	470
AIR1-KR KW RH 3000 L	03967	1000	640	970	865	306	425	485	300	608	438	580
AIR1-KR KW RH 3000 R	04286	1000	640	970	865	306	425	485	300	608	438	580
AIR1-KR KW RH 5000 L	03971	1100	780	1240	1005	330	475	620	375	883	438	855
AIR1-KR KW RH 5000 R	04287	1100	780	1240	1005	330	475	620	375	883	438	855
AIR1-KR KW RH 6000 L	03976	1100	830	1360	1055	330	475	680	400	883	438	855
AIR1-KR KW RH 6000 R	04288	1100	830	1360	1055	330	475	680	400	883	438	855
AIR1-KR KW RH 8000 L	03983	1100	950	1610	1175	330	475	805	465	1083	438	1055
AIR1-KR KW RH 8000 R	04382	1100	950	1610	1175	330	475	805	465	1083	438	1055
AIR1-KR KW RH 9500 L	03984	1100	1000	1710	1225	330	475	855	490	1228	438	1200
AIR1-KR KW RH 9500 R	04383	1100	1000	1710	1225	330	475	855	490	1228	438	1200
AIR1-KR KW RH 12000 L	04183	1100	1080	1860	1305	330	475	930	530	1503	538	1475
AIR1-KR KW RH 12000 R	04389	1100	1080	1860	1305	330	475	930	530	1503	538	1475
AIR1-KR KW RH 15000 L	04184	1100	1200	2110	1425	330	475	1055	590	1628	738	1600
AIR1-KR KW RH 15000 R	04391	1100	1200	2110	1425	330	475	1055	590	1628	738	1600

Type	Ref. no.	U	V	W	X	Y	Z	AA	AB	AC <sup>(1)</sup>	AE	AF
AIR1-KR KW RH 1500 L	03958	310	–	–	–	175	50	85	350	G 1/2	858	712
AIR1-KR KW RH 1500 R	04283	310	–	–	–	175	50	85	350	G 1/2	858	712
AIR1-KR KW RH 2000 L	03959	310	–	–	–	182	36	85	399	G 3/4	858	812
AIR1-KR KW RH 2000 R	04285	310	–	–	–	182	36	85	399	G 3/4	858	812
AIR1-KR KW RH 3000 L	03967	410	–	–	–	182	36	85	449	G 1	858	922
AIR1-KR KW RH 3000 R	04286	410	–	–	–	182	36	85	449	G 1	858	922
AIR1-KR KW RH 5000 L	03971	410	498	–	–	180	40	100	575	G 1 1/4	958	1192
AIR1-KR KW RH 5000 R	04287	410	498	–	–	180	40	100	575	G 1 1/4	958	1192
AIR1-KR KW RH 6000 L	03976	410	498	–	–	175	55	115	575	G 1 1/4	958	1312
AIR1-KR KW RH 6000 R	04288	410	498	–	–	175	55	115	575	G 1 1/4	958	1312
AIR1-KR KW RH 8000 L	03983	410	498	361	–	185	65	105	735	G 1 1/2	958	1562
AIR1-KR KW RH 8000 R	04382	410	498	361	–	185	65	105	735	G 1 1/2	958	1562
AIR1-KR KW RH 9500 L	03984	410	498	409	–	205	60	113	770	G 2	958	1662
AIR1-KR KW RH 9500 R	04383	410	498	409	–	205	60	113	770	G 2	958	1662
AIR1-KR KW RH 12000 L	04183	510	598	501	1563	200	70	113	850	G 2	958	1812
AIR1-KR KW RH 12000 R	04389	510	598	501	1563	200	70	113	850	G 2	958	1812
AIR1-KR KW RH 15000 L	04184	710	798	814	1688	195	100	118	970	G 2	958	2062
AIR1-KR KW RH 15000 R	04391	710	798	814	1688	195	100	118	970	G 2	958	2062

(1) External thread