

AIR1-CO DX RH



■ **Change-over cooling register**

For temperature control (cooling/heating) of supply air. Suitable for use with common refrigerants (selection list, see www.AIR1Select.com). Casing in robust panel construction, insulated on all sides with 50 mm mineral wool to minimise heat loss. External corrosion-resistant coating of casing. Stainless steel condensate tray with condensate drain outlets. Large inspection openings for easy access and optimised cleaning and maintenance. Condensate connection 32 mm.

Necessary accessories: AIR1-SM DX (Ref. no. 40408)

Recommended accessories: Ball siphon AIR1-KS D (Ref. no. 07170)

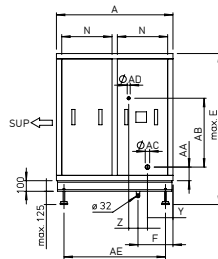
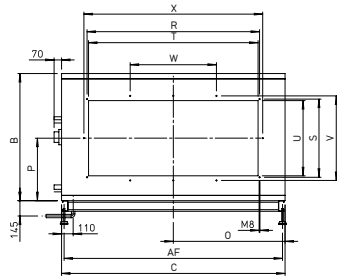
Detailed calculations / technical information: www.AIR1Select.com

■ **Technical data**

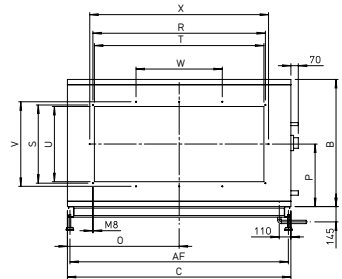
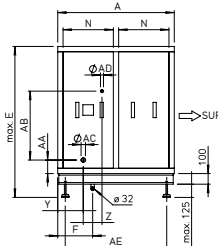
Type	Ref. no.	Version	Weight (without liquid)	Filling capacity	Ø connection outlet	Ø connection inlet
AIR1-CO DX RH 1500 L	40390	left	65.0 kg	1.6 l	16 mm	12 mm
AIR1-CO DX RH 1500 R	40399	right	65.0 kg	1.6 l	16 mm	12 mm
AIR1-CO DX RH 2000 L	40391	left	79.0 kg	2.2 l	19 mm	12 mm
AIR1-CO DX RH 2000 R	40400	right	79.0 kg	2.2 l	19 mm	12 mm
AIR1-CO DX RH 3000 L	40392	left	100.0 kg	2.9 l	22 mm	16 mm
AIR1-CO DX RH 3000 R	40401	right	100.0 kg	2.9 l	22 mm	16 mm
AIR1-CO DX RH 5000 L	40393	left	156.0 kg	5.3 l	28 mm	16 mm
AIR1-CO DX RH 5000 R	40402	right	156.0 kg	5.3 l	28 mm	16 mm
AIR1-CO DX RH 6000 L	40394	left	180.0 kg	6.3 l	28 mm	16 mm
AIR1-CO DX RH 6000 R	40403	right	180.0 kg	6.3 l	28 mm	16 mm
AIR1-CO DX RH 8000 L	40395	left	240.0 kg	11.6 l	35 mm	22 mm
AIR1-CO DX RH 8000 R	40404	right	240.0 kg	11.6 l	35 mm	22 mm
AIR1-CO DX RH 9500 L	40396	left	265.0 kg	13.3 l	35 mm	22 mm
AIR1-CO DX RH 9500 R	40405	right	265.0 kg	13.3 l	35 mm	22 mm
AIR1-CO DX RH 12000 L	40397	left	303.0 kg	13.0 l	42 mm	22 mm
AIR1-CO DX RH 12000 R	40406	right	303.0 kg	13.0 l	42 mm	22 mm
AIR1-CO DX RH 15000 L	40398	left	380.0 kg	16.5 l	42 mm	28 mm
AIR1-CO DX RH 15000 R	40407	right	380.0 kg	16.5 l	42 mm	28 mm

Dimensions AIR1-CO DX RH

Version left (L)



Version right (R)



Dimensions in mm

When looking at the cooling register from the air flow direction, the service side is on the right for the R version and on the left for the L version.

■ Dimensions

Type	Ref. no.	A	B	C	E	F	N	O	P	R	S	T
AIR1-CO DX RH 1500 L	40390	1000	520	760	745	306	425	380	265	378	338	350
AIR1-CO DX RH 1500 R	40399	1000	520	760	745	306	425	380	265	378	338	350
AIR1-CO DX RH 2000 L	40391	1000	580	860	805	306	425	430	295	498	338	470
AIR1-CO DX RH 2000 R	40400	1000	580	860	805	306	425	430	295	498	338	470
AIR1-CO DX RH 3000 L	40392	1000	675	970	865	306	425	485	320	608	438	580
AIR1-CO DX RH 3000 R	40401	1000	675	970	865	306	425	485	320	608	438	580
AIR1-CO DX RH 5000 L	40393	1100	780	1240	1005	330	475	620	375	883	438	855
AIR1-CO DX RH 5000 R	40402	1100	780	1240	1005	330	475	620	375	883	438	855
AIR1-CO DX RH 6000 L	40394	1100	830	1360	1055	330	475	680	400	883	438	855
AIR1-CO DX RH 6000 R	40403	1100	830	1360	1055	330	475	680	400	883	438	855
AIR1-CO DX RH 8000 L	40395	1100	950	1610	1175	330	475	805	465	1083	438	1055
AIR1-CO DX RH 8000 R	40404	1100	950	1610	1175	330	475	805	465	1083	438	1055
AIR1-CO DX RH 9500 L	40396	1100	1000	1710	1225	330	475	855	490	1228	438	1200
AIR1-CO DX RH 9500 R	40405	1100	1000	1710	1225	330	475	855	490	1228	438	1200
AIR1-CO DX RH 12000 L	40397	1100	1080	1860	1305	330	475	930	530	1503	538	1475
AIR1-CO DX RH 12000 R	40406	1100	1080	1860	1305	330	475	930	530	1503	538	1475
AIR1-CO DX RH 15000 L	40398	1100	1200	2110	1425	330	475	1055	590	1628	738	1600
AIR1-CO DX RH 15000 R	40407	1100	1200	2110	1425	330	475	1055	590	1628	738	1600

Type	Ref. no.	U	V	W	X	Y	Z	AA	AB	AC	AD	AE	AF
AIR1-CO DX RH 1500 L	40390	310	–	–	–	196	74	130	170	16	12	858	712
AIR1-CO DX RH 1500 R	40399	310	–	–	–	196	74	130	170	16	12	858	712
AIR1-CO DX RH 2000 L	40391	310	–	–	–	196	59	110	240	19	12	858	812
AIR1-CO DX RH 2000 R	40400	310	–	–	–	196	59	110	240	19	12	858	812
AIR1-CO DX RH 3000 L	40392	410	498	–	–	196	69	110	290	22	16	858	922
AIR1-CO DX RH 3000 R	40401	410	498	–	–	196	69	110	290	22	16	858	922
AIR1-CO DX RH 5000 L	40393	410	498	–	–	196	64	116	432	28	16	958	1192
AIR1-CO DX RH 5000 R	40402	410	498	–	–	196	64	116	432	28	16	958	1192
AIR1-CO DX RH 6000 L	40394	410	498	–	–	196	79	121	412	28	16	958	1312
AIR1-CO DX RH 6000 R	40403	410	498	–	–	196	79	121	412	28	16	958	1312
AIR1-CO DX RH 8000 L	40395	410	498	361	–	203	177	116	492	35	22	958	1562
AIR1-CO DX RH 8000 R	40404	410	498	361	–	203	177	116	492	35	22	958	1562
AIR1-CO DX RH 9500 L	40396	410	498	409	–	220	205	116	527	35	22	958	1662
AIR1-CO DX RH 9500 R	40405	410	498	409	–	220	205	116	527	35	22	958	1662
AIR1-CO DX RH 12000 L	40397	510	598	501	1563	213	127	123	580	42	22	958	1812
AIR1-CO DX RH 12000 R	40406	510	598	501	1563	213	127	123	580	42	22	958	1812
AIR1-CO DX RH 15000 L	40398	710	798	814	1688	241	177	128	650	42	28	958	2062
AIR1-CO DX RH 15000 R	40407	710	798	814	1688	241	177	128	650	42	28	958	2062