

AIR1-SM DX



Control module DX

For connecting the control of an AIR1 ventilation unit of the XC, XH and RH series to the control of an on-site cooling system. Various input and output signals from and to the cooling system are available. Note: Necessary accessory in connection with an AIR1-CO DX change-over register.

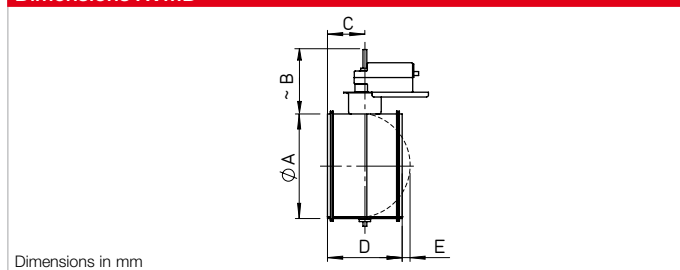
Dimensions (WxHxD): 205 x 255 x 112 mm

Technical data				
Type	Ref. no.	Voltage	Electricity	Ambient temperature.
AIR1-SM DX	40408	230 V AC / 50 Hz	max. 0.33 A	0 to +40°C

RVMD



Dimensions RVMD



Motorised duct shutter tight

Can be installed horizontally and vertically in any position and with mounted spring return motor (outside of air flow). Cable length 0,9 m, normally closed. Corresponds to tightness class 4 to DIN EN 1751.

Technical data

XHP units	Type	Ref. no.	Shutter opening time, approx.	Ambient temp.	Protection category	Actuator type
AIR1 XHP 750 / AIR1 XHP 1000	RVMD 250/24V	40246	60 s	-32 to +55 °C	IP54	24 V DC, 24 V AC (50/60 Hz), spring return
AIR1 XHP 1500	RVMD 355/24V	40248	60 s	-32 to +55 °C	IP54	24 V DC, 24 V AC (50/60 Hz), spring return
AIR1 XHP 2500	RVMD 400/24V	40249	60 s	-32 to +55 °C	IP54	24 V DC, 24 V AC (50/60 Hz), spring return

Dimensions

XHP units	Type	Ref. no.	Ø A	B	C	D	E
AIR1 XHP 750 / AIR1 XHP 1000	RVMD 250/24V	40246	250	137	79	158	44
AIR1 XHP 1500	RVMD 355/24V	40248	355	137	126	251	50
AIR1 XHP 2500	RVMD 400/24V	40249	400	137	126	251	72

AIR1-JVK XH



Multi-leaf damper internal

Multi-leaf damper for preventing cold draughts when the fan is stationary. Framework casing with connection flange on both sides. Counter-rotating blades, with retracted sealing lip. Sealing class 2. Installation inside of unit.

Technical data

Type	Ref. no.	Runtime (open / closed)	Weight	Ambient temperature	Actuator type
AIR1-JVK XH 1000	06005	40 ... 75 s	2.5 kg	-30 to +50 °C	24 V DC. spring return
AIR1-JVK XH 1500/RH 1500	06006	40 ... 75 s	3.0 kg	-30 to +50 °C	24 V DC. spring return
AIR1-JVK XH 2500/RH 2000	06007	40 ... 75 s	4.0 kg	-30 to +50 °C	24 V DC. spring return
AIR1-JVK XH 3500-4500/RH 3000	06009	40 ... 75 s	5.0 kg	-30 to +50 °C	24 V DC. spring return
AIR1-JVK XH 5500/RH 5000-6000	06010	40 ... 75 s	6.6 kg	-30 to +50 °C	24 V DC. spring return
AIR1-JVK XH 7000/RH 8000	06012	40 ... 75 s	7.8 kg	-30 to +50 °C	24 V DC. spring return
AIR1-JVK XH 8500/RH 9500	06013	40 ... 75 s	8.6 kg	-30 to +50 °C	24 V DC. spring return