

**AIR1 XH 7000**

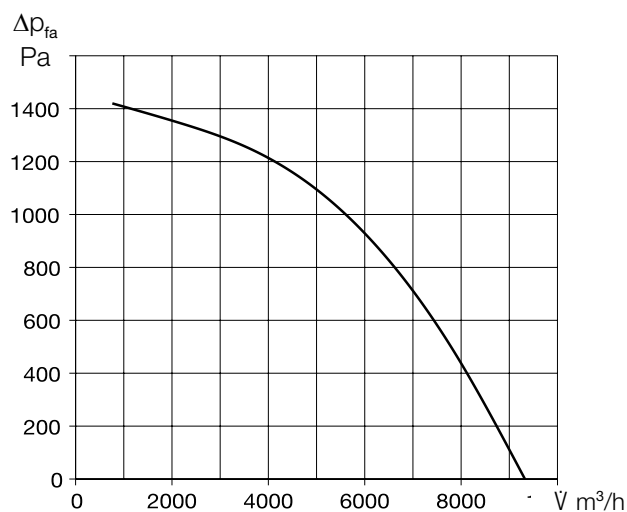


**Separable casing design**



Fig. shows accessories

**Performance curve AIR1 XH 7000**



**Unit type**

	<b>AIR1 XH 7000</b>
Ref. no.	04341
Heat exchanger	Cross-counterflow

**Technical data**

<b>Mechanical data</b>	
Area of application	Inside/outside
Installation position	standing
Maintenance access	Side, both sides
Min. air volume	1,080 m <sup>3</sup> /h
Max. air volume ERP	6,700 m <sup>3</sup> /h <sup>(1)</sup>
Max. air volume (free blowing)	9,300 m <sup>3</sup> /h
Weight, unit operational	1,080 kg
Delivery unit	3-part
Unit segments	3
Housing class (DIN 1886)	T2 / TB2 / D2
Filter Outside air	ISO ePM <sub>1</sub> , 55% (F7) <sup>(2)</sup>
Filter Extract air	ISO ePM <sub>10</sub> 50% (M5) <sup>(2)</sup>
Media temperature (air)	-20 to +50 °C
Ambient temperature (place of installation)	-20 to +50 °C
Protection class	IP31
<b>Electrical data</b>	
Central building control system	BACnet, Modbus TCP/IP
Voltage / Frequency	400 V 3N ~, 50 Hz
Max. output Fans	2 x 3,600 W
Max. output elec. pre-heater	21,000 W
Nominal current	
– Ventilation unit	41.3 / 41.3 / 42.3 A <sup>(3)</sup>
– Electrical auxiliary heater	30.3 / 30.3 / 30.3 A <sup>(4)</sup>
– max. total	71.6 / 71.6 / 72.6 A
Connection (wiring diagram no.)	1332

(1) = at 400 Pa external pressure loss ERP-compliant

(2) = other filter classes see optional accessories

(3) = includes electrical pre-heater

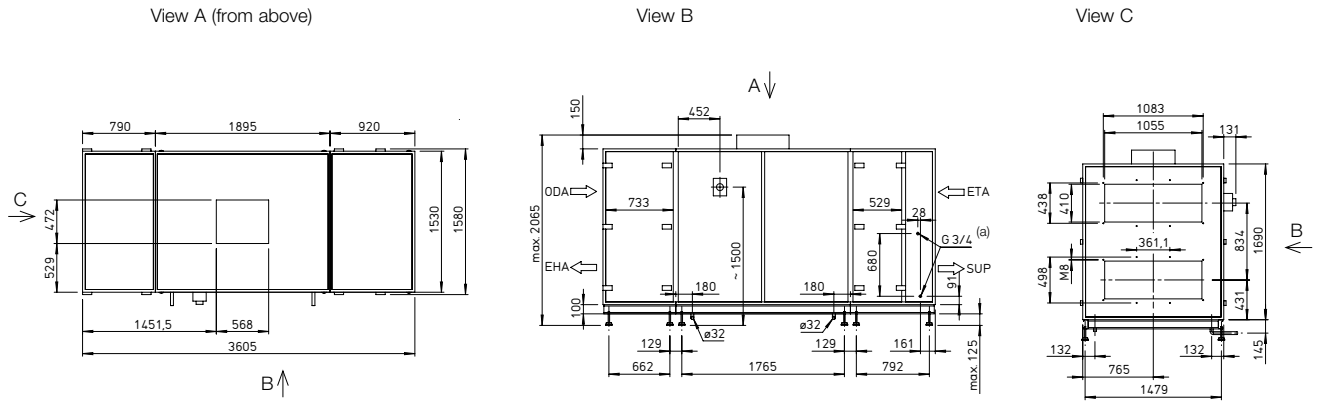
(4) = Optional accessories

**Sound data**

<b>Sound power level L<sub>WA</sub> dB(A) at 400 Pa external pressure</b>			
	2,200 m <sup>3</sup> /h	4,400 m <sup>3</sup> /h	6,700 m <sup>3</sup> /h
Supply air (L <sub>WA</sub> )	78	81	88
Extract air (L <sub>WA</sub> )	64	63	71
Outside air (L <sub>WA</sub> )	67	62	68
Exhaust air (L <sub>WA</sub> )	77	80	87
<b>Sound pressure level L<sub>pA</sub> dB(A) of sound radiated from housing</b>			
	2,200 m <sup>3</sup> /h	4,400 m <sup>3</sup> /h	6,700 m <sup>3</sup> /h
Housing rad. 1 m	47	48	55
Housing rad. 3 m	37	39	45
Housing rad. 5 m	33	34	41

The sound power at the connectors is calculated for the simultaneous operation of both fans. The sound pressure level is determined for the simultaneous operation of both fans at distances of 1, 3 and 5 m.

Dimensions AIR1 XH 7000



Dimensions in mm

(a) External thread

ODA: Outside air

EHA: Exhaust air

ETA: Extract air

SUP: Supply air

■ Accessories

■ Heating and cooling registers

**Auxiliary heater**

<b>AIR1-ENH XH 7000</b> Electrical, internal	Ref. no. 03603	Page 84
---	----------------	---------

<b>AIR1-NH WW XH 7000</b> Hot water, internal	Ref. no. 03689	Page 85
--	----------------	---------

**Hydraulic unit for hot water heater register**

<b>WHSB HE 24 V (0 – 10 V) M</b>	Ref. no. 06310	Page 85
----------------------------------	----------------	---------

**Cooling register**

<b>AIR1-KR KW XH 7000 L</b> <sup>(1)</sup> Cold water, external	Ref. no. 03945	Page 86
--	----------------	---------

<b>AIR1-KR KW XH 7000 R</b> <sup>(1)</sup> Cold water, external	Ref. no. 04281	Page 86
--	----------------	---------

<b>AIR1-CO DX XH 7000 L</b> <sup>(1)</sup> Change-over, external	Ref. no. 04414	Page 88
---	----------------	---------

<b>AIR1-CO DX XH 7000 R</b> <sup>(1)</sup> Change-over, external	Ref. no. 03123	Page 88
---	----------------	---------

<b>AIR1-SM DX</b> <sup>(2)</sup> Control module	Ref. no. 40408	Page 90
--	----------------	---------

■ Air routing

**Multi-leaf damper**

<b>AIR1-JVK XH 7000/RH 8000</b>	Ref. no. 06012	Page 90
---------------------------------	----------------	---------

**Recirculation kit**

<b>AIR1-ULK XH 7000</b>	Ref. no. 06028	Page 91
-------------------------	----------------	---------

**Flexible connector**

<b>AIR1-VS 105/41</b>	Ref. no. 04376	Page 91
-----------------------	----------------	---------

■ Condensate drainage

**Ball siphon**

<b>AIR1-KS B</b> for use with floor-mounted units and cooling register	Ref. no. 07169	Page 92
---	----------------	---------

■ External installation

**Cover for external installation**

<b>AIR1-AAD XH 7000</b> Weather protection cover for the unit	Ref. no. 06350	Page 93
--	----------------	---------

<b>AIR1-AAD KR KW + DX XH 7000</b> Weather protection cover for cooling register cold water or direct evaporator	Ref. no. 06465	Page 94
---	----------------	---------

**Terminal box heater**

<b>AIR1-AAHK</b>	Ref. no. 07064	Page 95
------------------	----------------	---------

**Hoods**

<b>AIR1-AAHA XH 7000/RH 8000</b> Intake hood outside air	Ref. no. 06497	Page 95
---	----------------	---------

<b>AIR1-AAHF XH 7000/RH 8000</b> Discharge hood exhaust air	Ref. no. 06841	Page 96
--	----------------	---------

■ Controls

**Controllers**

<b>AIR1-BE ECO</b>	Ref. no. 06186	Page 97
--------------------	----------------	---------

<b>AIR1-BE TOUCH</b>	Ref. no. 06187	Page 97
----------------------	----------------	---------

**Controller connection cable**

<b>AIR1-SL 4/10</b> 10 m	Ref. no. 07073	Page 97
--------------------------	----------------	---------

<b>AIR1-SL 4/20</b> 20 m	Ref. no. 07121	Page 97
--------------------------	----------------	---------

**Sensors**

<b>AIR1/KWL-VOC 0-10V</b> Mixed gas sensor	Ref. no. 20250	Page 97
--	----------------	---------

<b>AIR1/KWL-CO2 0-10V</b> Carbon dioxide sensor	Ref. no. 20251	Page 97
---	----------------	---------

<b>AIR1/KWL-FTF 0-10V</b> Humidity-temperature sensor	Ref. no. 20252	Page 97
---	----------------	---------

<b>AIR1-CO2 K</b> Carbon dioxide sensor duct	Ref. no. 07124	Page 98
--	----------------	---------

**Signal converter for sensors**

<b>AIR1-SK</b>	Ref. no. 06019	Page 98
----------------	----------------	---------

**Extension kit for constant pressure control**

<b>AIR1-CAP</b>	Ref. no. 06756	Page 98
-----------------	----------------	---------

■ Air filters

**Spare air filter and other filter classes**

<b>ELF-AIR1 XH 7000/ePM10 50%/48</b> (M5)	Ref. no. 02187	Page 99
---	----------------	---------

<b>ELF-AIR1 XH 7000/ePM10 50%/96</b> (M5)	Ref. no. 02209	Page 99
---	----------------	---------

<b>ELF-AIR1 XH 7000/ePM10 55%/96</b> (F7)	Ref. no. 02234	Page 99
---	----------------	---------

<b>ELF-AIR1 XH 7000/ePM10 80%/96</b> (F9)	Ref. no. 02435	Page 99
---	----------------	---------

The use of original spare air filters is mandatory to guarantee the specified technical data and air volumes.

(1) = When looking at the cooling register from the air flow direction, the service side is on the right for the R version and on the left for the L version.

(2) = Necessary accessory in connection with an AIR1-CO DX change-over register for connecting an AIR1 ventilation unit of the XC, XH and RH series to the control of an on-site cooling system.