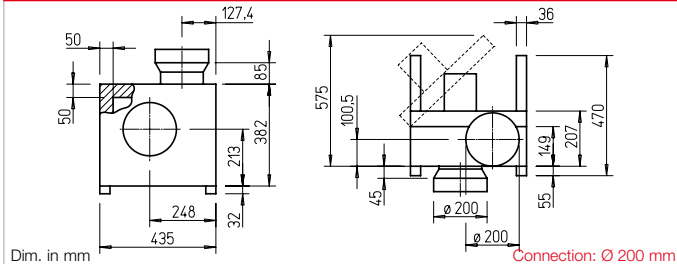


MB 160 Ex



Dimensions MB 160 Ex



■ Casing

Double-walled, made of galvanised steel sheet. Sound insulated by lining with 50 mm thick mineral wool insulation boards. Duct connectors on inlet side and outlet side, with rubber lip seal, adapted to standard diameter. Motor-impeller unit fully retractable for inspection and cleaning, suspended on stable hinges. Includes mounting rails made of galvanised steel with screwed-on vibration dampers for easy installation.

■ Impeller

Forward curved high performance centrifugal impeller made of galvanised steel, dynamically balanced together with the motor.

High efficiency, low noise, aerodynamically optimised volute casing.

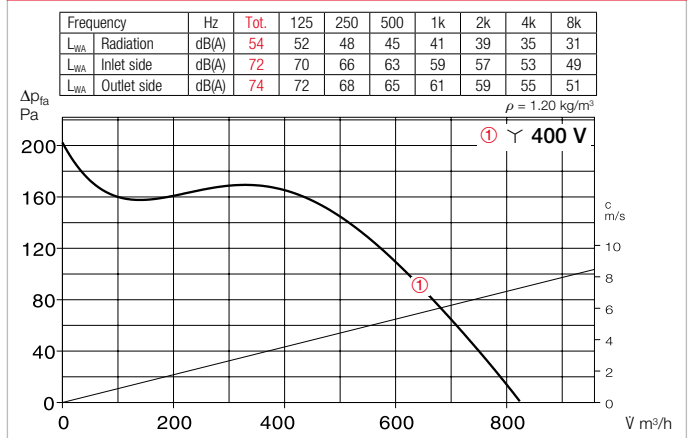
■ Drive

Through maintenance-free IEC flange motor in protection category IP55. Ball bearing mounted, radio interference-free.

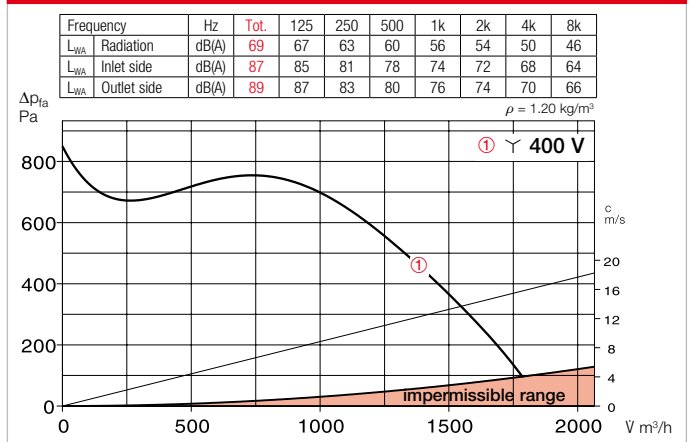
■ Electrical connection

Standard terminal box (IP55) on outside of motor.

Performance curves MBD 160/4 Ex



Performance curves MBD 160/2 Ex



■ Accessories

Wall bracket

Made of galvanised steel sheet.
MB-WK 160 Ref. no. 05526

Weather protection cover

Made of galvanised steel sheet, mounted above motor.
MB-WSD Ref. no. 01856

Flexible connecting sleeve

For installation between fan and duct.
FM 200 Ex Ref. no. 01686

■ Reference

Techn. description, selection table **Page** 320 ff.

Type	Ref. no.	Flow rate free blowing	Rated speed	Case-rad. sound pressure	Power consumption*	Current consumption*		Wiring diagram	Max. air flow temperature		Weight net aprx.	Transformer speed controller 5-step			
						at rated voltage	in contr. mode		Rat. vol..	Control		with motor prot. circuit breaker	w/o motor prot. circuit breaker	Type	Ref. no.
		V m³/h	min ⁻¹	dB(A) at 1m	kW	A	A	No.	+ °C	+ °C	kg	Type	Ref. no.	Type	Ref. no.
Explosion-proof, II 2G Ex h IIB T3 Gb, motor Ex e, three-phase current 400 V, 50 Hz, protection category IP55															
MBD 160/4 Ex	06001	970	1420	48	0.37	1.08	–	470	40	–	25.0	Not permitted	–	Not permitted	–
MBD 160/2 Ex	06002	2020	2885	63	1.50	3.16	–	470	40	–	34.0	Not permitted	–	Not permitted	–

* For ex-proof types: Motor ratings, see info p. 20.