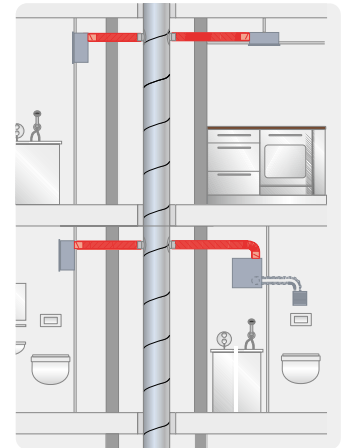
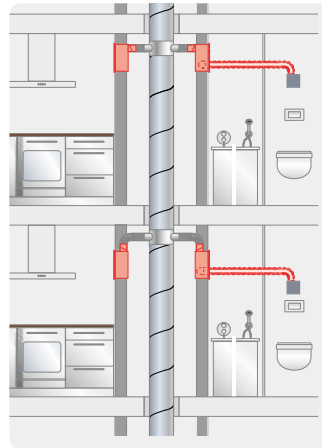
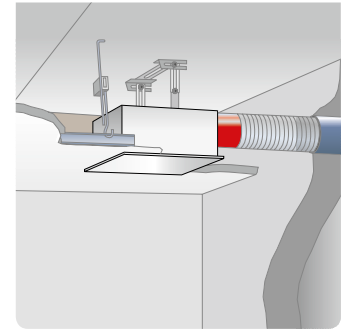
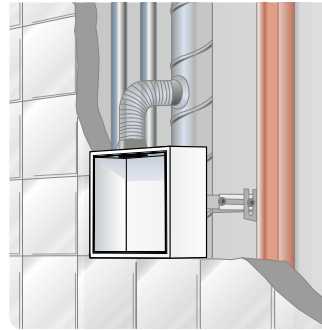


The perfect casing solution for all requirements.

Adapted to the installation location and fire protection requirements, the perfect casing solution is always at the ready. Determine the applicable installation situation using the illustrations and select the corresponding casing in the quick overview. All relevant casing details can be found on the following pages.

- A** Inside K90 shaft
- B** Outside K90 shaft
- C** On K90 shaft
- D** With fire damper
- E** Without fire protection



A Inside K90 shaft

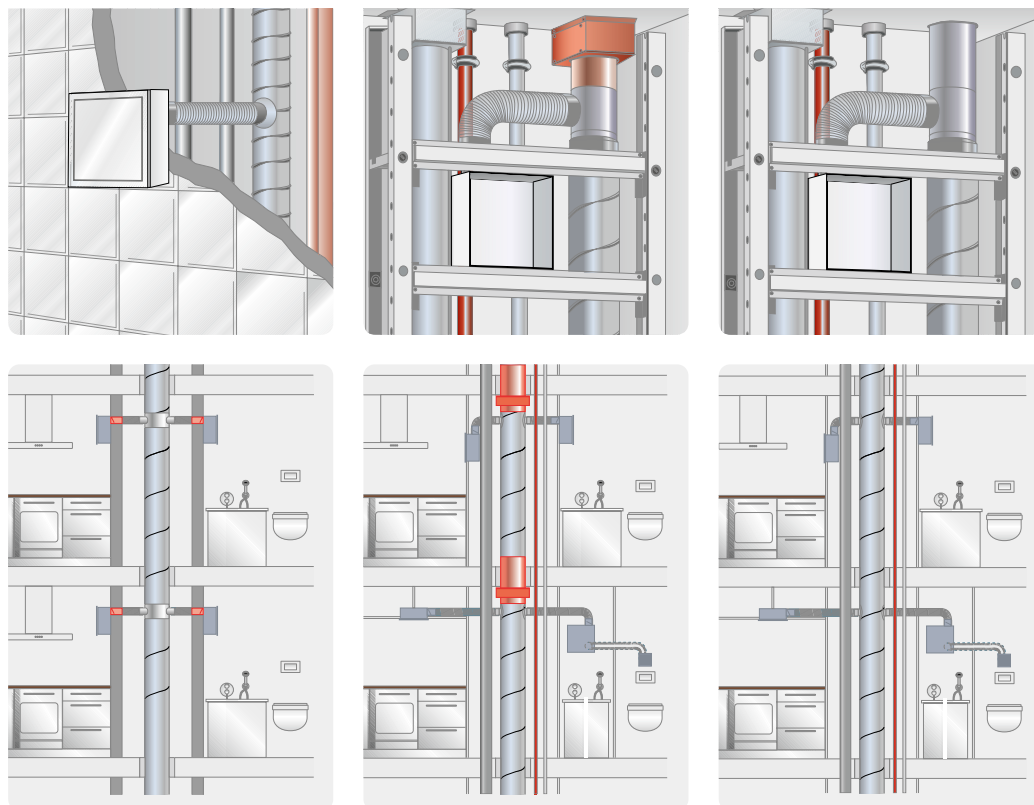
Flexible or rigid steel tube only to second room connection.

B Outside K90 shaft

Flexible or rigid steel tube to main line.

Quick selection

Installation, discharge	Type	Ref. no.	Type	Ref. no.
Single room ventilation of bathroom, WC or domestic kitchen				
Flush-mounted, lateral discharge	ELS-GUB	08112	ELS-GUBA	08114
Flush-mounted, discharge to back	ELS-GUBR	08113	ELS-GUBA + access. ELS-ARS	08114 08185
Surface-mounted, discharge to back			ELS-GAPB	08128
Surface-mounted, lateral discharge			ELS-GUBA + access. ELS-APASA	08114 07328
Two room ventilation of bathroom and WC				
Flush-mounted, lateral discharge	ELS-GUBZL left	08115	ELS-GUBA	08114
	ELS-GUBZR right	08117	ELS-ZS	08186
Flush-mounted, discharge to back	ELS-GUBRZL left	08116	ELS-GUBA + access. ELS-ARS	08114 08185
	ELS-GUBRZR right	08118	+ access. ELS-ZS	08186



C On K90 shaft

D With fire damper

E Without fire protection

For up to 2 full floors.

Information on fire protection in multi-storey buildings

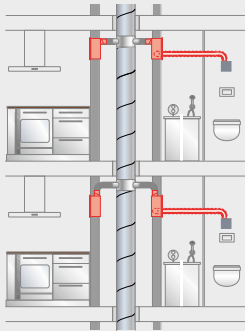
With regard to the planning and execution of ventilation systems, the State fire protection requirements must be complied with.

Buildings with more than two full floors are normally subject to such requirements.

In order to prevent the transmission of fire to other fire sections, the illustrated solutions are available according to the structural conditions for the installation of mono tube ventilation systems.

Type	Ref. no.	Type	Ref. no.	Type	Ref. no.	Installation, discharge
		ELS-GU	08111	ELS-GU	08111	Flush-mounted, lateral discharge
		ELS-GU + access. ELS-ARS	08111 08185	ELS-GU + access. ELS-ARS	08111 08185	Flush-mounted, discharge to back
ELS-GAPB	08128	ELS-GAP	08127	ELS-GAP	08127	Surface-mounted, discharge to back
ELS-GAPB	08128	ELS-GU + access. ELS-APASA	08111 07328	ELS-GU + access. ELS-APASA	08111 07328	Surface-mounted, lateral discharge
		ELS-GU + access. ELS-ZS	08111 08186	ELS-GU + access. ELS-ZS	08111 08186	Flush-mounted, lateral discharge
		ELS-GU + access. ELS-ARS + access. ELS-ZS	08111 08185 08186	ELS-GU + access. ELS-ARS + access. ELS-ZS	08111 08185 08186	Flush-mounted, discharge to back

A Flush-mounted installations in wall, ceiling and fire-resistant shaft (F90) or L90 ventilation ducts.



Connection of up to 3 casings per floor possible on more than 20 full floors. The second room connection must be carried out with steel flexpipe connection.

- Flush-mounted casing with fire protection encasement K90
- Metal discharge spigot with automatic backdraught shutter and shut-off upon triggering of fusible link

- Removable plug connector for electrical connection
- Replaceable hinged plaster cover
- Connection DN 80 mm
- General technical approval, Z-51.1-193

■ Single room ventilation of bathroom, WC or domestic kitchen

			Type	ELS-GUB
			Ref. no.	08112
			Installation	Flush-mounted
			Discharge	lateral, upward, can be turned to left or right
			Type	ELS-GUBR
			Ref. no.	08113
			Installation	Flush-mounted
			Discharge	to the back, rotatable by 90° in any direction

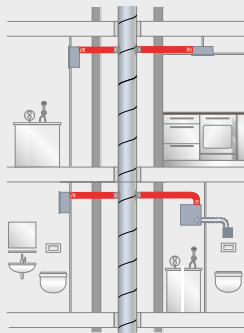
■ Ventilation of bathroom and WC

			Type	ELS-GUBZL
			Ref. no.	08115
			Installation	Flush-mounted
			Discharge	lateral, upward, can be rotated left or right
			Sec. room connection	Left
			Type	ELS-GUBZR
			Ref. no.	08117
			Installation	Flush-mounted
			Discharge	lateral, upward, can be rotated left or right
			Sec. room connection	Right
			Type	ELS-GUBRZL
			Ref. no.	08116
			Installation	Flush-mounted
			Discharge	to the back, rotatable by 90° in any direction
			Sec. room connection	Left

■ Two-room ventilation of bathroom and WC

		Type	ELS-GUBRZR
		Ref. no.	08118
		Installation	Flush-mounted
		Discharge	to the back, rotatable by 90° in any direction
		Sec. room connection	Right

B Flush or surface-mounted installations in wall or ceiling outside of fire-resistant shafts (F90) or L90 ventilation ducts.



Connection of up to 3 casings per floor possible on more than 20 floors. Steel flexpipe connection to main line.

- Removable plug connector for electrical connection
- Connection DN 80 mm
- General technical approval, Z-51.1-193

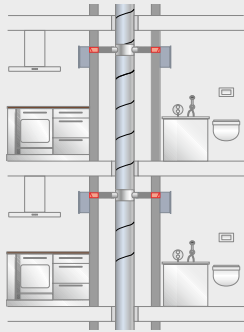
- Plastic casing with fire protection element K90
- Metal discharge spigot with automatic backdraught shutter and shut-off upon triggering of fusible link
- Made of plastic (white), in fire class B 2

■ Single room ventilation of bathroom, WC or domestic kitchen

Also for second room ventilation of bathroom and WC by means of accessory set*

			Type	ELS-GUBA
			Ref. no.	08114
		Installation	Flush-mounted	
		Discharge	lateral, upward, can be turned to left or right	
		Optional discharge	to the back, rotatable by 90° in any direction ELS-ARS, Ref. no. 08185	
		*Sec. room ventilation optionally left or right	by means of ELS-ZS, Ref. no. 08186	
			Type	ELS-APASA (+ ELS-GUBA)**
			Ref. no.	07328
		Installation	Surface-mounted	
		Discharge	lateral, upward, can be turned to left or right	
		**ELS-GUBA (Ref. no. 08114) is not included in the scope of delivery.		
			Type	ELS-GAPB
			Ref. no.	08128
		Installation	Surface-mounted	
		Discharge	to the back, rotatable by 90° in any direction	
		ELS-surface-mounted unit		

C Surface-mounted installation in wall or ceiling on walls of fire-resistant shafts (F90) or ventilation ducts (L90).

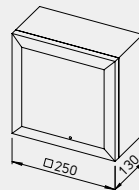
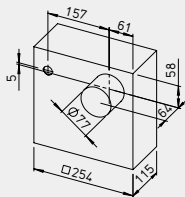


Connection of up to 3 casings per floor possible on more than 20 floors.

- Surface mounting casing with fire protection element K90
- Metal discharge spigot with automatic backdraught shutter and shut-off upon triggering of fusible link
- Removable plug connector for electrical connection

- Made of plastic (white), in fire class B 2
- Connection Ø air outlet DN 80 mm
- General technical approval, Z-51.1-193

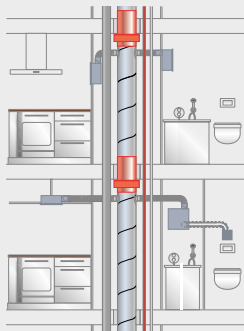
■ Single room ventilation of bathroom, WC or domestic kitchen



ELS-surface-mounted unit

Type	ELS-GAPB
Ref. no.	08128
Installation	Surface-mounted
Discharge	to the back, rotatable by 90° in any direction

D Flush or surface-mounted installation in wall, ceiling or in installation shaft with fire protection solution ELS-D fire damper.



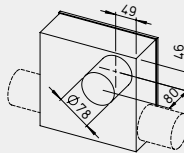
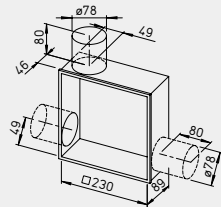
Connection of up to 3 casings per floor possible. For more than 20 floors when using fire protection damper in the main line

- Applicable casings: Universal casing without fire protection ELS-GU for flush-mounting, or ELS-GAP or ELS-APASA in connection with ELS-GU for surface-mounting

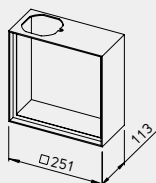
- Casing without fire protection, with airtight backdraught shutter
- Removable plug connector for electrical connection
- Made of plastic (white), in fire class B 2
- Connection DN 80 mm
- General technical approval, Z-51.1-193

■ Flush or surface-mounted installation. Single room ventilation of bathroom, WC or domestic kitchen.

Also for second room ventilation of bathroom and WC by means of accessory set*



Type	ELS-GU
Ref. no.	08111
Installation	Flush-mounted
Discharge	lateral, upward, left or right
Optional discharge	to the back, rotatable by 90° in any direction using ELS-ARS Ref. no. 08185 by
*Sec. room ventilation optionally left or right	means of ELS-ZS, Ref. no. 08186



Type	ELS-APASA (+ ELS-GU)**
Ref. no.	07328
Installation	Surface-mounted
Discharge	lateral, upward, can be rotated left or right

**ELS-GU (Ref. no. 08111) is not included in scope of delivery.

■ Surface-mounting. Single room ventilation of bathroom, WC or domestic kitchen.

			Type	ELS-GAP
			Ref. no.	08127
			Installation	Surface-mounted
			Discharge	to the back, rotatable by 90° in any direction

ELS-surface-mounted unit

E Flush or surface-mounted installations in wall, ceiling or in installation shaft without fire protection.

Connection of up to 3 casings per floor possible. For connection to shared main line of up to two full floors.

- Applicable casings: Universal casing without fire protection ELS-GU for flush-mounting, or ELS-GAP or ELS-APASA in connection with ELS-GU for surface-mounting.
- Casing without fire protection, with airtight backdraught shutter
- Removable plug connector for electrical connection
- Made of plastic (white), in fire class B 2
- Connection DN 80 mm.
- General technical approval, Z-51.1-193

■ Flush-mounting. Single room ventilation of bathroom, WC or domestic kitchen.
Also for second room ventilation of bathroom and WC by means of accessory set*

			Type	ELS-GU
			Ref. no.	08111
			Installation	Flush-mounted
			Discharge	lateral, upward, left or right
			Optional discharge	to the back, rotatable by 90° in any direction ELS-ARS Ref. no. 08185
			*Sec. room ventilation optionally left or right	by means of ELS-ZS, Ref. no. 08186

■ Surface-mounting. Single room ventilation of bathroom, WC or domestic kitchen.

			Type	ELS-GAP
			Ref. no.	08127
			Installation	Surface-mounted
			Discharge	to the back, rotatable by 90° in any direction

ELS-surface-mounted unit

		Type	ELS-APASA (+ ELS-GU)**
		Ref. no.	07328
		Installation	Surface-mounted
		Discharge	lateral, upward, can be turned to left or right

**ELS-GU (Ref. no. 08111) is not included in scope of delivery.

■ ultraSilence® ELS-inner facia
Included in delivery set with fan insert.