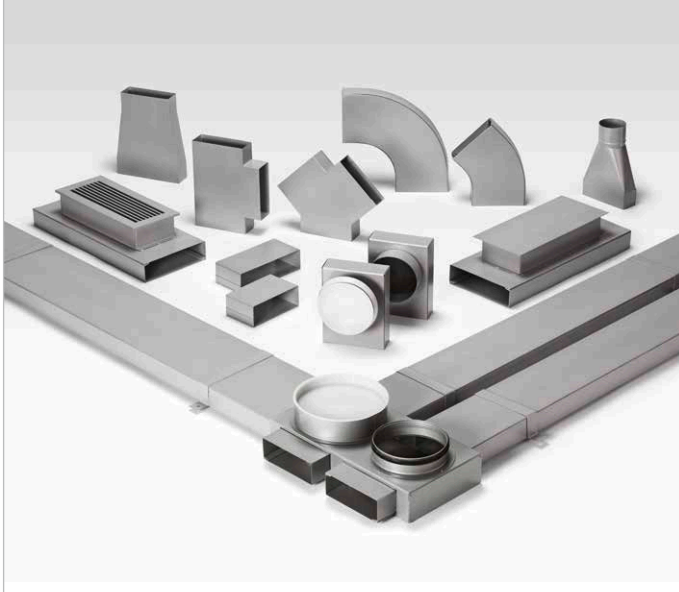


Flat duct system FK



Underfloor duct system made of galvanised steel sheet, specifically developed for domestic ventilation. The optimal solution for concealed air ducts; ideal for air distribution in new buildings.

■ Properties

- All components made of galvanised steel sheet, corrosion-resistant and non-flammable.

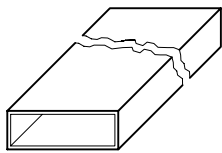
■ Available in two sizes

- FK 150 x 50 mm for volume flows up to 90 m<sup>3</sup>/h.
- FK 200 x 50 mm for volume flows up to 140 m<sup>3</sup>/h.

■ Duct concept and installation

- Flat design and rigid construction allow easy installation in unfinished flooring.
- Connection using external connector. Moulded parts with integrated sleeve (insertion depth approx. 35 mm). The smooth internal walls result in low flow resistances and do not create obstacles for dirt deposits. Cleaning (disinfection) is still possible.
- The distribution box, which must be installed per floor for extract and supply air delivery, simplifies the duct layout.
- Flat silencers (FK-SD) can be installed in the duct system to protect noise-sensitive rooms, e.g. bedrooms.

Flat duct

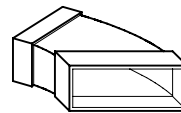


Dimensions in mm

Flat duct

Type	Ref. no.	Width	Height	Length
<b>150 x 50 m</b>				
FK 150	02905	150	50	1500
<b>200 x 50 mm</b>				
FK 200	02906	200	50	1500

Bend, horizontal 45°



Bend, horizontal 45°

Type	Ref. no.	Width	Height	Radius
<b>150 x 50 m</b>				
FK-BH 150/45	02910	153	53	45°
<b>200 x 50 mm</b>				
FK-BH 200/45	02912	203	53	45°

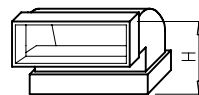
Connector



Connector

Type	Ref. no.	Width	Height	Length
<b>150 x 50 m</b>				
FK-V 150	02941	153	53	200
<b>200 x 50 mm</b>				
FK-V 200	02942	203	53	200

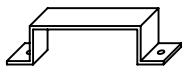
Bend, vertical 90°



Bend, vertical 90°

Type	Ref. no.	Width	Height	Radius
<b>150 x 50 m</b>				
FK-BV 150/90	02919	153	103	90°
<b>200 x 50 mm</b>				
FK-BV 200/90	02920	203	103	90°

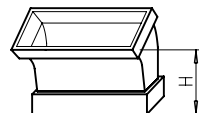
Mounting bracket



Mounting bracket

Type	Ref. no.	Width	Height	Length
<b>150 x 50 m</b>				
FK-B 150	02907	151	52	30
<b>200 x 50 mm</b>				
FK-B 200	02908	201	52	30

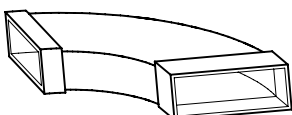
Bend, vertical 45°



Bend, vertical 45°

Type	Ref. no.	Width	Height	Radius
<b>150 x 50 m</b>				
FK-BV 150/45	02917	153	73	45°
<b>200 x 50 mm</b>				
FK-BV 200/45	02918	203	73	45°

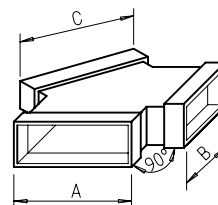
Bend, horizontal 90°



Bend, horizontal 90°

Type	Ref. no.	Width	Height	Radius
<b>150 x 50 m</b>				
FK-BH 150/90	02909	153	53	90°
<b>200 x 50 mm</b>				
FK-BH 200/90	02911	203	53	90°

Y-branch



Y-branch

Type	Ref. no.	Dim. in mm	A	B	C
<b>150 x 50 m</b>					
FK-Y 150/150/150	02927	153	153	153	
<b>200 x 50 mm</b>					
FK-Y 200/150/150	02929	153	153	203	

**T-piece**

Dimensions in mm

T-piece					
Type	Ref. no.	Dim. in mm			
		A	B	C	E
FK-T 150/150/150	02921	153	153	153	250
FK-T 150/150/200	02923	153	153	203	390
FK-T 150/200/150	02926	153	203	153	300
FK-T 200/150/200	02925	203	153	203	250
FK-T 150/200/200	02924	153	203	203	440
FK-T 200/200/200	02922	203	203	203	300

**Transition piece**

Transition piece				
Type	Ref. no.	Dim. in mm		
		A	Ø B	C
<b>150 x 50 mm</b>				
FK-Ü 75/150	02948	153	78	260
FK-Ü 100/150	02996	153	103	260
<b>200 x 50 mm</b>				
FK-Ü 100/200	02997	203	103	260
FK-Ü 125/200	02998	203	128	260

**Reducers**

Reducers			
Type	Ref. no.	Dim. in mm	
		Length	Height
<b>Reducer symmetrical</b>			
FK-RS 200/150	02932	260	53
<b>Reducer asymmetrical</b>			
FK-RA 200/150	02933	260	53

**Outlet**

Ceiling/wall outlet				
Type	Ref. no.	Colour	Dim. in mm	
			A	B
<b>200 x 50 mm</b>				
FK-WA 200 W	09350	White	250	103
FK-WA 200 AL	09351	Alum.	250	103

**End piece – Spiral duct**

End piece with connection for spiral duct			
Type	Ref. no.	Dim. in mm	
		Ø D	L
<b>150 x 50 mm</b>			
FK-ER 150/100	02934	99	200
FK-ER 150/125	02935	124	200
<b>200 x 50 mm</b>			
FK-ER 200/160	02936	159	220

**Silencer**

Silencer			
Type	Ref. no.	Dim. in mm	
		A	B
<b>150 x 50 mm</b>			
FK-SD 150	02945	153	53
<b>200 x 50 mm</b>			
FK-SD 200	02946	203	53

**End piece – Valve**

End piece with connection for spiral duct			
Type	Ref. no.	Dim. in mm	
		Ø D	L
<b>150 x 50 mm</b>			
FK-EV 150/100	02937	102	200
FK-EV 150/125	02938	127	200
<b>200 x 50 mm</b>			
FK-EV 200/100	02939	102	200
FK-EV 200/125	02940	127	200

**Distribution box**

Add. connector

Distribution box	
Type	Ref. no.
FK-VK	02987
<b>Delivery FK-VK</b>	
4 connectors 150 x 50 (2 enclosed loose), 1 connectors 200 x 50 and 1 inspection panel.	
<b>Add. connectors for straight distributor</b>	
FK-ZS	02947

**Inspection piece**

Inspection piece					
Type	Ref. no.	Dim. in mm			
		A	B	C	D L
<b>150 x 50 mm</b>					
FK-RZ 150	02930	153	53	347	137 500
<b>200 x 50 mm</b>					
FK-RZ 200	02931	203	53	347	137 500

Dim. E can vary from 105-130 mm.

**End cover**

End cover	
Type	Ref. no.
<b>150 x 50 mm</b>	
FK-ED 150	02943
<b>200 x 50 mm</b>	
FK-ED 200	02944

**Floor grille**

Aluminium floor grille with inst. casing				
Type	Ref. no.	Dim. in mm		
		A	B	C D L
<b>150 x 50 mm</b>				
FK-BA 150	02986	153	53	348 152 500

Dim. E can vary from 112-152 mm.

**Sealing tape**

Sealing tape/Tape	
Type	Ref. no.
<b>Cold shrink tape</b>	
KSB	09343 50 mm wide, 15 lin. m
<b>Aluminium cold shrink tape</b>	
KSB ALU	09344 50 mm wide, 15 lin. m
<b>Tape</b>	
KLB	00619 50 mm wide, 20 lin. m