

Extract air elements



Design ventilation valves and disc valves

For extract air delivery at high and low flow rates or resistances. DLV with visually closed front design and integrated filter.

Supply air elements



Design ventilation valves and disc valves

For supply air delivery at high and low flow rates or resistances. DLV 125 with visually closed front design and integrated filter.

Supply air-extract air valve ZAV



Supply air-extract air valve ZAV

Elegant plastic valve for wall and ceiling installation. Can be used as a wall element with open front grille. Ceiling installation with closed front grille. Flexible application as supply air valve or extract air valve.

Attachment filter element VFE



Attachment filter element VFE

For installation in front of disc valves for greasy, contaminated room air. Prevents grease and dirt deposits. Casing made of galvanised steel sheet, white, plastic powder-coated. Filter made of dimensionally stable aluminium filter fabric with 324 cm² free filter surface and aluminium frame.

Control lines



Control lines

8-pin AWG24 twisted pair cable for the control element for types KWL EC 700 D to KWL EC 2600 S and KWL YOGA from 400 to 1000.

Adapter board



Adapter board

Adapter from flat ribbon cable to stranded wire or cable. For connection of KNX module and RJ10 control line. See KWL unit product pages for description of KNX module.

Type KWL-RJ10 KL No. 04277

Ø 80		Ø 100		Ø 125		Ø 160	
Type	Ref. no.	Type	Ref. no.	Type	Ref. no.	Type	Ref. no.
Design ventilation valve DLV ¹⁾ for extract air							
		DLV 100	03039	DLV 125	03049		
		ELF-DLV 100 ²⁾	03042	ELF-DLV 125 ²⁾	03058		
Plastic disc valve KTVA							
KTVA 75/80	00940	KTVA 100	00941	KTVA 125	00942	KTVA 160	00943
Metal disc valve for extract air (for areas where non-flammable components are compulsory)							
MTVA 75/80	08868	MTVA 100	08869	MTVA 125	08870	MTVA 160	08871

¹⁾ With integrated filter.

²⁾ Replacement air filter for DLV, unit = 5 pcs.

Ø 80		Ø 100		Ø 125		Ø 160	
Type	Ref. no.	Type	Ref. no.	Type	Ref. no.	Type	Ref. no.
Ventilation grille LGK, Design ventilation valve DLV for supply air							
LGK 80	00259	DLVZ 100	03040	DLV 125	03049		
				ELF-DLV 125 ¹⁾	03058		
Plastic disc valve KTVZ							
KTVZ 80	02762	KTVZ 100	02736	KTVZ 125	02737	KTVZ 160	02738
Metal disc valve for supply air (for areas where non-flammable components are compulsory)							
MTVZ 75/80	09603	MTVZ 100	09604	MTVZ 125	09605	MTVZ 160	09606

¹⁾ Replacement air filter for DLV 125, unit = 5 pcs.

Ø 80		Ø 100		Ø 125		Ø 160	
Type	Ref. no.	Type	Ref. no.	Type	Ref. no.	Type	Ref. no.
Plastic valve for supply and extract air ZAV							
ZAV 80	03079			ZAV 125	03080		

VFE 70 Ref. no. 02552

VFE 90 Ref. no. 02553

ELF/VFE Ref. no. 02554

Replacement air filter, unit = 2 pcs.

For control element KWL EC 700 D - 2600 S and KWL YOGA 400 - 1000 (8-pin AWG24 twisted pair cable)		
Cable length	Type	Ref. no.
20 metres	ALB EC-SK 20	06816
40 metres	ALB EC-SK 40	06817

Other accessories	Page
– Enthalpy heat exchanger	103
– Flexible duct system	152
– Insulated duct system	164 f.
– Air distrib. systems	166 ff.
– HygroBox	172 f.
– Ground heat exchang.	174 ff.
– Fire prot. elements	590 ff.

Accessory details	
Dimensions, further technical information and other sizes:	
Warm water heating elements and temp. control systems	490 ff.
Ventilation grilles, ducts, moulded parts, roof outlets	561 ff.
Extract air elements, attachment filter elements	574 ff.
Disc valves	582 ff.

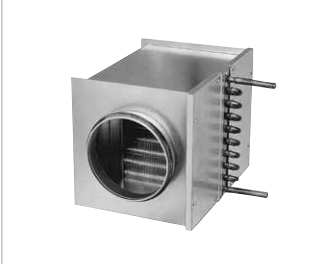
Shutters



Silencer



Warm water heating element



Door ventilation grilles



Cleaning set



Air temperature control



Hydraulic unit



	Ø 100	Ø 125	Ø 160	Ø 200	Ø 250	Ø 315	Ø 355	Ø 400							
Flexible connecting sleeve – For acoustic decoupling, incl. 2 pcs. hose clamps															
FM 100	01681	FM 125	01682	FM 160	01684	FM 200	01670	FM 250	01672	FM 315	01674	FM 355	01675	FM 400	01676
Duct shutters – Self-actuating or **motorised, installed in pipeline, casing made of galvanised steel sheet or *plastic															
RSKK* 100	05106	RSKK* 125	05107	RSK 160	05669	RSK 200	05074	RSK 250	05673	RSK 315	05674	RSK 355	05650	RSK 400	05651
						RVM** 250	02576	RVM** 315	02578	RVM** 355	02579	RVM** 400	02580		
KAK 100	04097	KAK 125	04098	KAK 160	04099	KAK 200	04100	Cold smoke shutter							
Flexible cross talk silencer FSD¹⁾, duct silencer RSD¹⁾ – Galvanised steel sheet									Duct silencer SDE see page 165						
FSD 100	00676	FSD 125	00677	FSD 160	00678	FSD 200	00679	FSD 250	00680	FSD 315	00681	FSD 355	00682	FSD 400	00683
								RSD 250	08739	RSD 315	08745	RSD 355	08748	RSD 400	08751

¹⁾ See product page for average insulation dimension.

Type	Ref. no.	Compatible with duct Ø mm	Air-side data					Water-side data ¹⁾			Compatible temperature control system	
			Heat output kW ¹⁾ kW ²⁾	Δ T air K ¹⁾ K ²⁾	at V m ³ /h	Pressure loss Δp _w kPa	with water volume l/h	Weight approx. kg	Type	Ref. no.		
WHR 100	09479	100	1.9	0.9	35	17	150	1	84	3.2	WHST 300 T50	08820
WHR 125	09480	125	2.6	1.1	29	13	250	2	115	3.2	WHST 300 T50	08820
WHR 160	09481	160	5.5	3.1	38	22	400	11	245	4.9	WHST 300 T50	08820
WHR 200	09482	200	7.2	4.1	33	19	600	17	317	4.9	WHST 300 T50	08820
WHR 250	09483	250	10.7	6.0	37	21	800	8	470	6.9	WHSH HE 24 V	08318
WHR 315	09484	351	18.3	10.4	36,2	21	1400	9	810	9.0	WHSH HE 24 V	08318
WHR 400	09524	400	26.2	15.0	36	21	2000	11	1060	12.5	WHSH HE 24 V	08318

Door ventilation grilles

Unobtrusive, sight screening ventilation grille made of break-resistant plastic for installation in door leaf.

See product page for detailed description.

LTGW Ref. no. 00246

Made of plastic, white.

LTGB Ref. no. 00247

Made of plastic, brown.

Cleaning set for air distribution systems flexpipe and renopipe.

The universal cleaning set KWL-RS is ideally suitable for cleaning the **flexpipe** duct systems (DN 75, DN 63) and the **renopipe** air distribution system (DN 100).

Application is possible either by pushing (for short distances) or pulling. In case of longer duct sections or narrow bends, the round nylon brush is simply pulled in the

direction of the distribution box, where the 90° bend is used for the intake connection. This is used to easily remove the dust loosened by the round nylon brush with a commercially available vacuum cleaner.

Delivered in a practical transport bag.

Delivery: Per 1 pc.

- Reel with flexible GFK wire (20 linear m.)
- Round brushes DN 63, 75, 100
- 90° bend and seal for intake connection DN 56
- Adapter DN 56/40, DN 56/32.

KWL-RS Ref. no. 02797

Air temperature control for KWL units with PWW post-heater.

For air heating control of the PWW post-heater integrated in KWL WW types. Consists of thermostat with remote adjustment and remote sensor. Simple, cost-effective and quick-to-install solution.

Temperature range 8 – 38 °C.

WHST 300 T38 Ref. no. 08817

Air temperature control



Air temperature control for warm water heating element WHR.

Ideal for use as supply air heater. Consists of thermostat incl. duct temperature sensor (with 2 m capillary tube) and valve. Provides a constant supply air temperature. Simple, cost-effective and quick-to-install solution.

Temperature range 20 – 50 °C.

WHST 300 T50 Ref. no. 08820

Hydraulic unit

Controls the water temperature of the PWW heating element using a three-way valve actuator 24 V (0-10 V) and thus the heat output transferred to the air. Delivered as a complete unit, incl. VL-/RL temperature display, circulating pump and flexible connection hoses.

WHSH HE 24 V (0-10V) No. 08318

Weekly timer



Weekly timer

Digital timer with LCD display for autom. control of op. mode, programmable for every weekday. Surface and flush-mounted install. Dim. mm (WxHxD) 84 x 84 x 40

WSUP Ref. no. 09990

For switch cabinet installation (2 space units required).

Dim. mm (WxHxD) 36 x 90 x 63

WSUP-S Ref. no. 09577

WHR: The values apply for supply air temp. 0 °C and flow/return temperatures: ¹⁾ 90/70 °C, ²⁾ 60/40 °C.