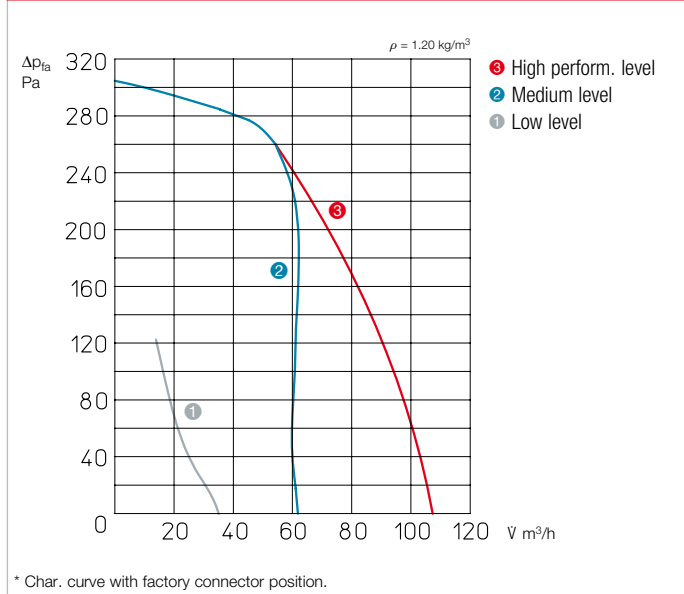


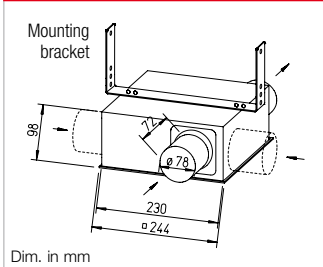
SVV 80



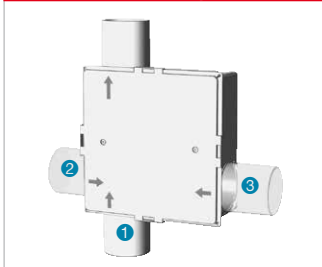
Performance curves SVV 80



Dimensions SVV 80



SVV 80 Connector position



Connector position			Total output
No. 1	No. 2	No. 3	V m³/h
35	45	45	125
65	closed	60	125
zu	45	75	120
50	60	closed	110
110*	closed*	closed*	110*
closed	closed	110	110
closed	100	zu	100

Volume output depending on number of inlet side connectors and position.

Flat casing in compact design made of high-quality, impact-resistant plastic. Suitable for the ventilation of wet rooms, toilets, etc. in industrial, commercial and residential buildings. Standard delivery with inlet and outlet side connectors for standard duct Ø. One or two additional inlet connectors (accessories) can be inserted in the casing by removing the blind cover for the ventilation of multiple rooms.

- Casing**  
Plastic cover easily removable for removal of the volute casing.
- Impeller**  
Energy-saving centrifugal impeller with forward curved blades made of high-quality plastic.
- Motor**  
Enclosed, ball bearing mounted energy-saving motor, maintenance-free.

- Motor protection**  
Through thermal overload protection in the winding.
- Power control**  
Manual three level operation using DSEL 3. Medium or low performance level can be connected for continuous operation and switched using DSEL 2.
- Electrical connection**  
Terminal box (IP55) on outside of casing.
- Installation**  
Possible in any position. The removable volute casing allows inspection and cleaning without dismantling the duct system. An inspection opening must be taken into account.
- Protection category**  
IP54 with connected duct system.

- Delivery and accessories**  
Delivery includes mounting bracket as well as inlet and outlet side connectors. One or two additional inlet connectors (accessories, DN 75/80 mm) can be inserted in the casing by removing the blind cover.

**ELS-ZAS** Ref. no. 08184

- Three level speed and operating switch with 0 position.**  
Convenient flush-mounted speed switch. Room light not switchable in parallel. Installation in flush-mounted switch box.  
Dim. mm (WxHxD) 80 x 80 x 23  
**DSEL 3** Ref. no. 01611



Round duct fans

Type	Ref. no.	Connection Ø	Flow rate free blowing*	Rated speed*	Sound pressure level Case-radiation*	Sound press. level Air noise inlet side*	Power consumption*	Current consumption*	Wiring diagram <sup>1)</sup>	Max. air flow temperature	Weight net aprx.
		mm	V m³/h	min <sup>-1</sup>	dB(A) in 3 m / 1 m	dB(A) in 3 m / 1 m	kW	A	No.	+ °C	kg
<b>Single phase Alternating current, 230 V, 50 Hz, IP45</b>											
<b>SVV 80</b>	02660	80	110 / 65 / 35	2710 / 1200 / 650	29/37 18/26 16/24	35/43 24/32 17/25	27 / 20 / 11	0.13 / 0.12 / 0.09	913	40	2.0

\* Values refer to the three performance levels (see performance diagram).

<sup>1)</sup> With three level speed switch DSEL 3: Wiring diagram no. 914.