

RR 125



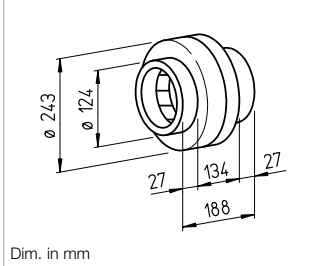
RRK 125



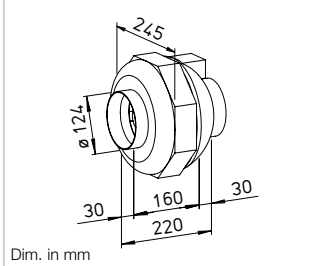
SVR 125



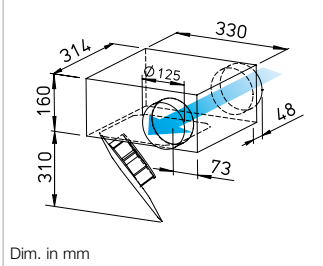
Dimensions RR 125



Dimensions RRK 125



Dimensions SVR 125



For the delivery of medium and small air volumes against high resistances.

Specifically designed for direct insertion in duct systems. High pressure performance for overcoming friction losses, deflection losses and aggregate resistances. For various applications in commercial, industrial and residential areas.

Special features

- Low space requirement and minimal installation costs due to linear throughflow.
- No need for elaborate deflectors.
- Connectors on inlet and outlet side correspond to standard duct Ø.
- Performance adjustment through 100% speed control.
- Can be used in any position.
- Wide range of accessories.
- Aerodynamically optimised casing design.

Common features

Motor

Enclosed, ball bearing mounted external rotor motor with humidity protection, insulation class F, for continuous operation, maintenance-free and radio interference-free.

Motor protection

Through built-in thermal contacts wired in series to the winding, automatic deactivation and reactivation after cooling.

Installation

No restrictions in any position (horizontal, vertical, diagonal) through corresponding installation for supply or extract ventilation (exception: SVR must not be installed with the retractable motor-impeller unit upward). Installation in duct system, preferably away from the room to be ventilated for less noise.

Description RR

Casing

Made of galvanised steel sheet, robust for harsh operating conditions. Inlet and outlet side connection dimensions correspond to standard duct Ø.

Power control

From 0 – 100 % possible using electronic controller or step transformer (see table) or two level operation with type DS 2/2 (accessories).

DS 2/2 Ref. no. 01267

Electrical connection

Terminal box (IP54) on outside of casing.

Impeller

Centrifugal, with backward curved blades made of plastic. Directly pressed on motor and dynamically balanced as a unit. Low-noise, high level of efficiency.

Protection category

Protection category IP44 through inlet and outlet-side installation in a duct system which prevents the ingress of rainwater.

Description RRK

Casing

All components made of corrosion-resistant and impact-resistant plastic. Six built-in guide blades additionally increase the level of efficiency. Colour: Silver-grey.

Power control

From 0 – 100 % possible using electronic controller or step transformer (see table).

Electrical connection

Terminal box (IP44) on outside of casing.

Impeller

Centrifugal, with backward curved blades made of plastic. Directly pressed on motor and dynamically balanced as a unit. Low-noise, high level of efficiency.

Protection category

IP44

Description SVR

Casing

Flat casing in compact design made of galvanised steel sheet. Connectors and lip seal on inlet and outlet side for standard duct Ø. The retractable motor-impeller unit allows inspection and cleaning without dismantling components. The swivelling range must be considered for the inspection opening.

Power control

From 0 – 100 % possible using electronic controller or step transformer (see table) or two level operation with type DS 2/2 (accessories).

DS 2/2 Ref. no. 01267

Electrical connection

Terminal box (IP54) mounted to external cable.

Impeller

Energy-saving centrifugal impeller with backward curved blades made of high-quality plastic. Dynamically balanced for low-noise operation.

Protection category

IP44 with connected duct system.

Noise

The total level and range are specified above the performance diagram for

- Case-radiated sound power
- Inlet/outlet side sound power in dB(A).
- The case-radiated noise and inlet/outlet side air noise as sound pressure at 1 m (free field conditions) are also specified in the type table.

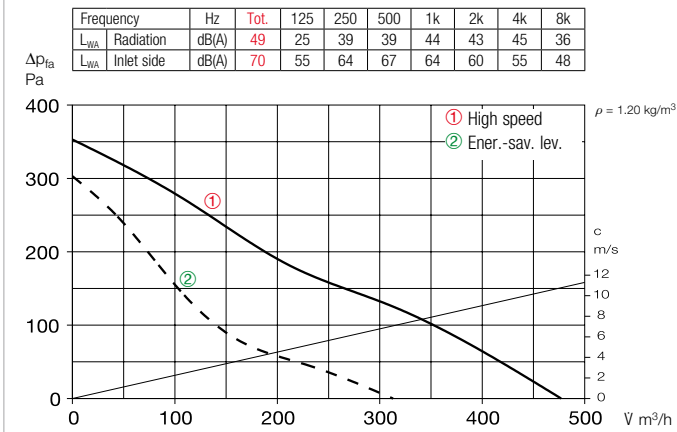
Type	Ref. no.	Flow rate	Rated speed	Sound press. case radiation	Power consum.	Power consump.		Wiring diagram	Max air flow temp.		Wgt net aprx.	Transformer speed controller 5-step	Electronic ³⁾ Speed controller, cont. var. flush-mount. / surf-mount.		
		Free blowing				at rated voltage	with control		at rated voltage	with control			Type	Ref. no.	Type
		V m³/h	min⁻¹	dB(A) in 1 m	W	A	A	No.	+ °C	+ °C	kg	Type	Ref. no.	Type	Ref. no.
Type RR, Single-phase alternating current, 230 V, 50 Hz, Capacitor motor, IP44															
RR 125 C¹⁾	05655	480 ¹⁾ /310	2480 ¹⁾ /1655	42	62 ¹⁾ /40	0.27 ¹⁾ /0.18	0.27	934.1	70	70	2.9	TSW 0.3	03608	ESU 1 / ESA 1	00236 / 00238
Type RRK, Single-phase alternating current, 230 V, 50 Hz, Capacitor motor, IP44															
RRK 125	05974	390	2635	36	42	0.19	0.19	508	70	60	2.5	TSW 0.3	03608	ESU 1 / ESA 1	00236 / 00238
Type SVR, Single-phase alternating current, 230 V, 50 Hz, Capacitor motor, IP33															
SVR 125 B²⁾	02671	400/290 ²⁾	2570/1810 ²⁾	46/38 ²⁾	59/41 ²⁾	0.26/0.18 ²⁾	0.24	934.1	60	60	5.1	TSW 1.5	01495	ESU 1 / ESA 1	00236 / 00238

¹⁾ Type with high speed; with additional energy-saving level as standard (see performance diagram). ²⁾ Values refer to the two performance levels (see performance diagram).

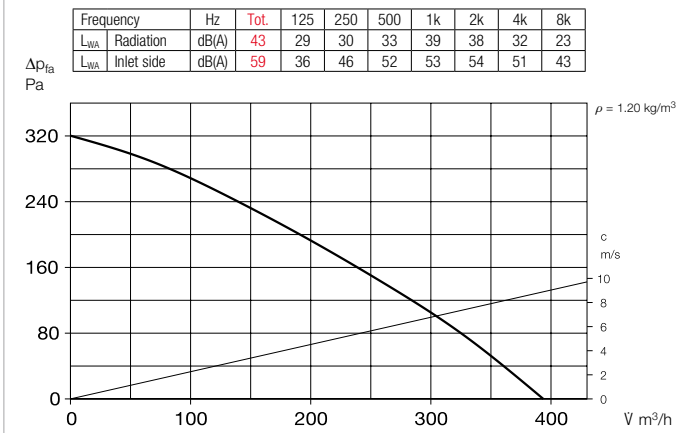
³⁾ Transformer control units must be provided in noise-relevant cases. Electronic phase angle control can cause disturbing magnetisation humming.

* See ErP product data sheet at www.HeliosSelect.de.

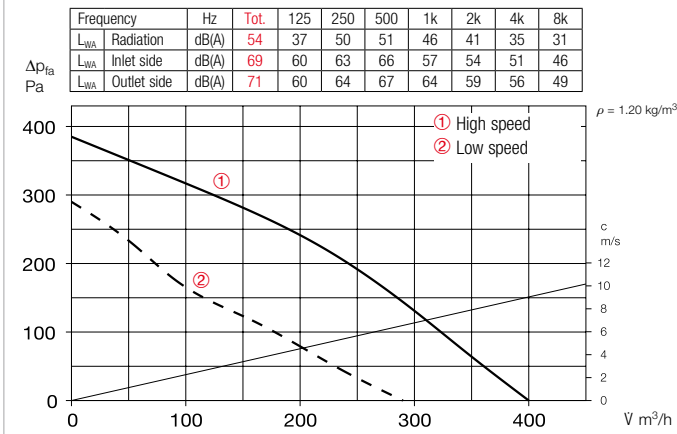
Performance curves RR 125 C



Performance curves RRK 125



Performance curves SVR 125 B



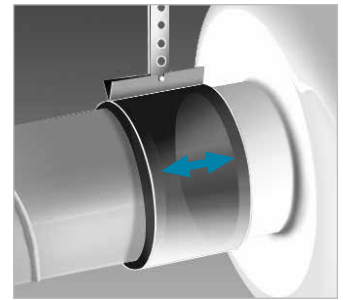
References	Page
Techn. description	360
Selection table	361
Planning information	14 ff.
Modular system	358

Other accessories	Page
Filter, heating elements and silencers	481 ff.
Temperature control systems for heating elements	487, 491 ff.
Flexible ventilation ducts, ventilation grilles, fittings, roof outlets	561 ff.
Disc valves	582 ff.
Speed controllers, controllers and switches	599 ff.

Accessories

Pipe clamp connectors

BM 125 Ref. no. 05076
For structure-borne noise-free connection of fan and piping and for suspension (1 set = 2 pcs). Mount ventilation duct and fan connector at a distance and fold sleeve over during installation.



Mounting bracket for RR

MK 4 Ref. no. 05824
Mounting bracket for RRK
MK 1 Ref. no. 05821
Made of galvanised steel sheet.



External wall shutter

VK 125 Ref. no. 00857
Automatic made of plastic, white.



External wall cover grille

G 160 Ref. no. 00893
Made of plastic, white.



Protection grille

SGR 125 Ref. no. 05064
For inlet and outlet side installation. Made of powder-coated steel wire.



Duct shutter

RSKK 125 Ref. no. 05107
Automatic, made of plastic



Flexible cross talk silencer

FSD 125 Ref. no. 00677
Made of aluminium pipe with double-sided plug-in connectors. Sound insulation lining 50 mm thick, installation length 1 m.



Air filter box

LFBR 125 Coarse 70%* 08577
LFBR 125 ePM1 50%* 08531
Air filter with large surface area, for installation in pipeline.



Electric heating element

EHR-R 0.8/125 0.8 kW No.08709
EHR-R 1.2/125 1.2 kW No.09433
- with integrated temp. control
EHR-R 0.8/125 TR 0.8 kW No.05293
Room or duct sensor (TFK/TFR, Accessories) required.



Temperature control system for electric heating element

EHR-R
EHS Ref. no. 05002



Warm water heating element

WHR 125 Ref. no. 09480
Compact heat exchanger for installation in duct system.



Temperature control system for warm water heating element

WHST 300 T38 Ref. no. 08817

* See product page 484 for detailed description.