

RR 200



RRK 200



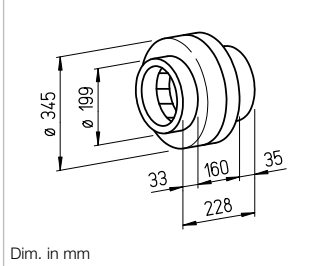
Alternative in corrosion-resistant and impact-resistant plastic casing.

SVR 200



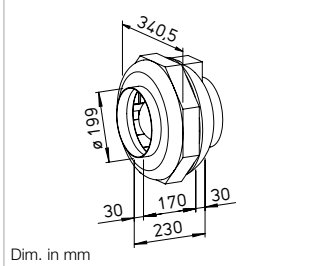
SlimVent – Slimline space saver with retractable motor-impeller unit.

Dimensions RR 200



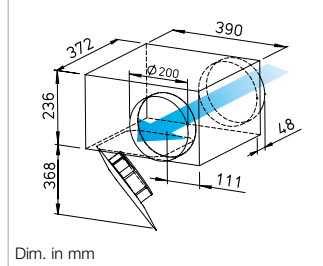
Dim. in mm

Dimensions RRK 200



Dim. in mm

Dimensions SVR 200



Dim. in mm

For the delivery of medium and small air volumes against high resistances.

Specifically designed for direct insertion in duct systems. High pressure performance for overcoming friction losses, deflection losses and aggregate resistances. For various applications in commercial, industrial and residential areas.

Special features

- Low space requirement and minimal installation costs due to linear throughflow.
- No need for elaborate deflectors.
- Connectors on inlet and outlet side correspond to standard duct Ø.
- Performance adjustment through 100% speed control.
- Can be used in any position.
- Wide range of accessories.
- Aerodynamically optimised casing design.

Common features

Motor

Enclosed, ball bearing mounted external rotor motor with humidity protection, insulation class F, for continuous operation, maintenance-free and radio interference-free.

Motor protection

Through built-in thermal contacts wired in series to the winding, automatic deactivation and reactivation after cooling.

Installation

No restrictions in any position (horizontal, vertical, diagonal) through corresponding installation for supply or extract ventilation (exception: SVR must not be installed with the retractable motor-impeller unit upward). Installation in duct system, preferably away from the room to be ventilated for less noise.

Noise

See page 398.

Description RR

Casing

Made of galvanised steel sheet, robust for harsh operating conditions. Inlet and outlet side connection dimensions correspond to standard duct Ø.

Power control

From 0 – 100 % possible using electronic controller or step transformer (see table). Two level operation with type RR 200 A using Type DS 2/2 (Accessories).
DS 2/2 Ref. no. 01267

Electrical connection

Terminal box (IP54) on outside of casing.

Impeller

Centrifugal, with backward curved blades made of plastic. Dynamically balanced as a unit. Low-noise, high level of efficiency.

Protection category

Protection category IP44 through inlet and outlet-side installation in a duct system which prevents the ingress of rainwater.

Description RRK

Casing

All components made of corrosion-resistant and impact-resistant plastic. Six built-in guide blades additionally increase the level of efficiency. Colour: Silver-grey.

Power control

From 0 – 100 % possible using electronic controller or step transformer (see table).

Electrical connection

Terminal box (IP44) on outside of casing.

Impeller

Centrifugal, with backward curved blades made of plastic. Dynamically balanced as a unit. Low-noise, high level of efficiency.

Protection category

IP44

Description SVR

Casing

Flat casing in compact design made of galvanised steel sheet. Connectors and lip seal on inlet and outlet side for standard duct Ø.

The retractable motor-impeller unit allows inspection and cleaning without dismantling components. The swivelling range must be considered for the inspection opening.

Power control

From 0 – 100 % possible using electronic controller or step transformer (see table).

Electrical connection

Terminal box (IP54) mounted to external cable.

Impeller

Energy-saving centrifugal impeller with backward curved blades made of high-quality plastic. Dynamically balanced for low-noise operation.

Protection category

IP44 with connected duct system.

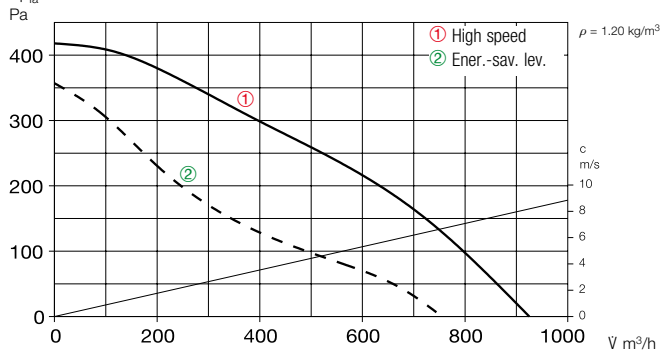
Type	Ref. no.	Flow rate Free blowing	Rated speed	Sound press. case radiation	Power consum.	Power consump.		Wiring diagram	Max air flow temp.		Wgt net aprx.	Transformer speed controller 5-step	Electronic ²⁾ Speed controller, cont. var. flush-mount. / surf-mount.		
						at rated voltage	with control		at rated voltage	with control			Type	Ref. no.	Type
		V m ³ /h	min ⁻¹	dB(A) in 1 m	W	A	A	No.	+ °C	+ °C	kg	Type	Ref. no.	Type	Ref. no.
Type RR, Single-phase alternating current, 230 V, 50 Hz, Capacitor motor, IP44 (Type RR 200 B, IP33)															
RR 200 A ¹⁾	05658	960 ¹⁾ /760	2630 ¹⁾ /1980	43	129 ¹⁾ /85	0.57 ¹⁾ /0.38	0.57	934.1	60	60	4.2	TSW 1.5	01495	ESU 1 / ESA 1	00236 / 00238
RR 200 B	05659	980	2750	44	145	0.63	0.78	508	70	60	5.0	TSW 1.5	01495	ESU 1 / ESA 1	00236 / 00238
Type RRK, Single-phase alternating current, 230 V, 50 Hz, Capacitor motor, IP44															
RRK 200	05977	870	2370	38	95	0.41	0.41	508	70	60	3.4	TSW 1.5	01495	ESU 1 / ESA 1	00236 / 00238
Type SVR, Single-phase alternating current, 230 V, 50 Hz, Capacitor motor, IP33															
SVR 200 K	02673	980	2730	57	154	0.67	0.81	508	70	50	8.4	TSW 1.5	01495	ESU 1 / ESA 1	00236 / 00238

¹⁾ Type with high speed; with additional energy-saving level as standard (see performance diagram).

²⁾ Transformer control units must be provided in noise-relevant cases. Electronic phase angle control can cause disturbing magnetisation humming.

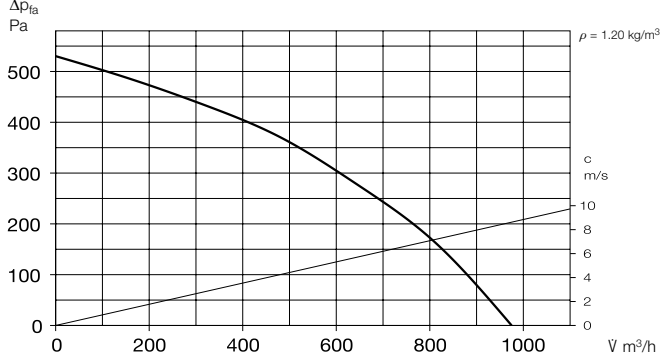
Performance curves RR 200 A

Frequency	Hz	Tot.	125	250	500	1k	2k	4k	8k
L _{WA} Radiation	dB(A)	50	31	40	46	46	40	38	31
L _{WA} Inlet side	dB(A)	74	61	68	69	64	66	64	56



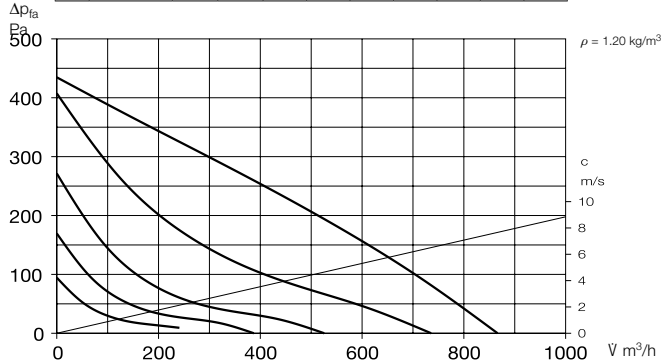
Performance curves RR 200 B

Frequency	Hz	Tot.	125	250	500	1k	2k	4k	8k
L _{WA} Radiation	dB(A)	52	34	41	46	48	44	44	35
L _{WA} Inlet side	dB(A)	74	62	67	69	66	63	62	57



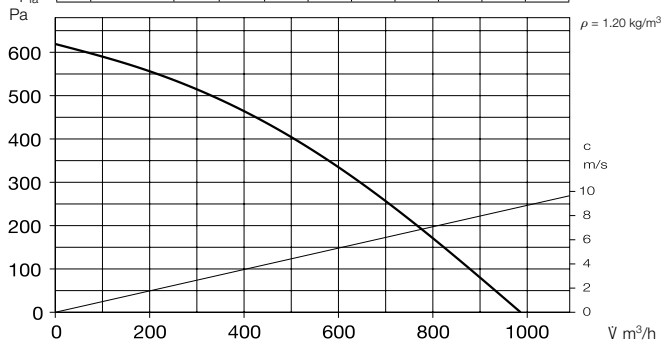
Performance curves RRK 200

Frequency	Hz	Tot.	125	250	500	1k	2k	4k	8k
L _{WA} Radiation	dB(A)	46	32	35	40	41	40	33	26
L _{WA} Inlet side	dB(A)	63	40	55	56	56	58	53	46



Performance curves SVR 200 K

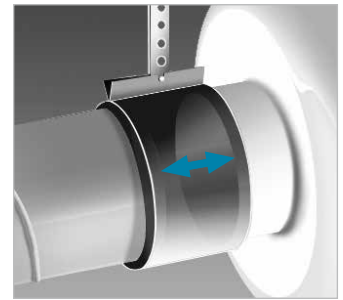
Frequency	Hz	Tot.	125	250	500	1k	2k	4k	8k
L _{WA} Radiation	dB(A)	65	47	62	61	53	48	42	36
L _{WA} Inlet side	dB(A)	78	65	74	73	65	63	60	57
L _{WA} Outlet side	dB(A)	82	69	77	79	71	70	66	63



Accessories

Pipe clamp connectors

BM 200 Ref. no. 05078
For structure-borne noise-free connection of fan and piping and for suspension (1 set = 2 pcs). Mount ventilation duct and fan connector at a distance and fold sleeve over during installation.



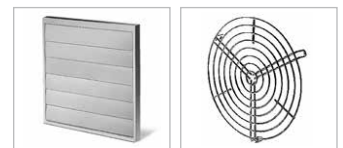
Mounting bracket for RR

MK 4 Ref. no. 05824
Mounting bracket for RRK
MK 2 Ref. no. 05822
Made of galvanised steel sheet.



External wall shutter

VK 200 Ref. no. 00758
Made of plastic, light grey.



External wall cover grille

RAG 200 Ref. no. 00750
Made of plastic, light grey.



Protection grille

SGR 200 Ref. no. 05066
For inlet and outlet side installation.
Made of galvanised steel.



Duct shutter

RSK 200 Ref. no. 05074
Automatic, made of metal.



Flexible cross talk silencer

FSD 200 Ref. no. 00679
Made of aluminium pipe with double-sided plug-in connectors. Sound insulation lining 50 mm thick, installation length 1 m.



Air filter box

LFBR 200 Coarse 70%* 08579
LFBR 200 ePM1 50%* 08533
Air filter with large surface area, for installation in pipeline.



Electric heating element

EHR-R 1.2/200 1.2 kW No.09436
EHR-R 2/200 2.0 kW No.09437
EHR-R 5/200 5.0 kW No.08711
– with integrated temp. control
EHR-R 5/200 TR 5.0 kW No.05295
Room or duct sensor (TFK/TFR, Accessories) required.



Temperature control system for electric heating element

EHR-R
EHS Ref. no. 05002



Warm water heating element

WHR 200 Ref. no. 09482
Compact heat exchanger for installation in duct system.



Temperature control system for warm water heating element

WHST 300 T38 Ref. no. 08817

* See product page 484 for detailed description.