

SB EC 160



Virtually silent with high volume output and pressure performance. Ideal for cleaning and inspection.



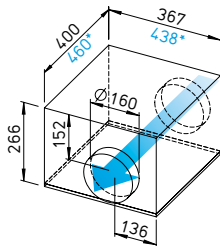
SVS EC 160



Lowest installation height. Ideal for limited installation spaces. With sound-insulating mineral wool lining for particularly low-noise operation.



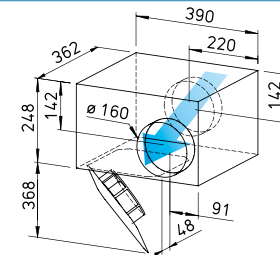
Dimensions SB EC 160



Dim. in mm

SB EC 160 A, *SB EC 160 B

Dimensions SVS EC 160



Dim. in mm

Common features SilentBox SB EC and SlimVent SVS EC

- **Installation**
See page 410.
- **Drive**
Energy-saving, speed-controllable EC external rotor motor in protection category IP44 with the highest level of efficiency. Maintenance-free and radio interference-free, ball bearing mounted. Motor and impeller dynamically balanced for low-noise operation.
- **Power control**
Continuously variable speed control with internal (delivery) or external potentiometer or continuously variable speed control with universal control system (see table). Performance levels are shown in the performance curve as an example.

- **Motor protection**
Integrated electronic temperature monitoring system for EC motor and electronics.

- **Noise**
See page 417.

Description SilentBox EC

- **Casing**
Designed as a silencer. Equipped with abrasion-resistant, sound-absorbing mineral fibre boards (50 mm). Removable cover with locking clamp. Freely accessible fan. Removable motor-impeller unit, the removal area must be considered. Inlet and outlet side connectors with rubber lip seal corresponds to standard duct Ø. All parts made of galvanised steel sheet.

- **Impeller**
With backward curved blades.

Inlet via nozzle. SB EC 125 A forward curved impeller in aerodynamically optimised volute casing, galvanised steel sheet.

- **Electrical connection**
Terminal box (IP54) mounted to external cable.

- **Protection category**
IP44 (SB EC 160 A IP54) with connected duct system.

Description SlimVent SVS EC

- **Casing**
Extremely flat casing with sound-insulating, over 50 mm thick mineral wool lining and glass fibre surface. The acoustic box placed in front of the fan wheel significantly reduces the inlet-side noises. The radiated noises are reduced to a lesser extent (see noise data above the performance diagrams).

- The retractable motor-impeller unit allows inspection and cleaning without dismantling the system components. The removal area of the motor-impeller unit must be considered.

- **Impeller**
Energy-saving centrifugal impeller with backward curved blades made of high-quality plastic.

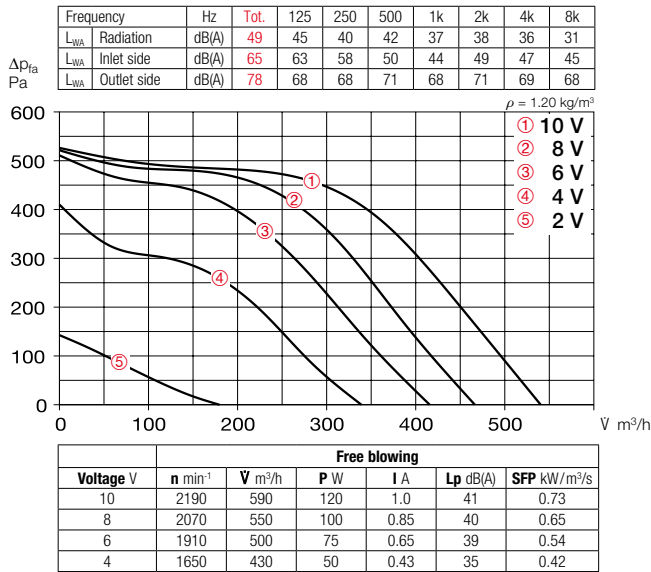
- **Electrical connection**
Terminal box (IP54) mounted to external cable.

- **Protection category**
IP44 with connected duct system.

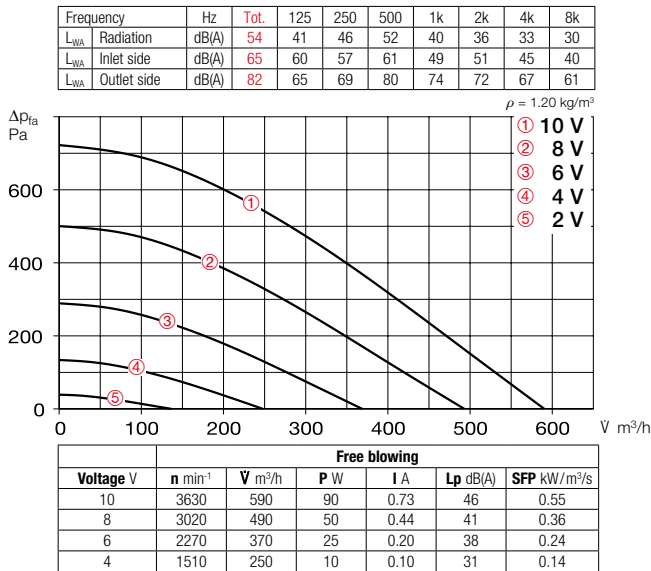
Type	Ref. no.	Connection Ø	Flow rate Free blowing	Rated speed	Sound press. case radiation	Power consum.	Current consum.	Wiring diagram	Max. air flow temp.	Wgt net aprx.	Universal control system		Speed potentiometer			
											Type	Ref. no.	Type	Ref. no.		
		mm	m³/h	min ⁻¹	dB(A) in 1 m	kW	A	No.	+ °C	kg	Type	Ref. no.	Type	Ref. no.		
Type SB EC, Single-phase alternating current, 230 V, 50/60 Hz, EC motor, IP54 (A), IP44 (B)																
SB EC 160 A	06136	160	580	2630	41	0.12	1.02	979	60	10.0	EUR EC ¹⁾²⁾	01347	PU 10 ¹⁾	01734	PA 10 ¹⁾	01735
SB EC 160 B	09625	160	590	3610	46	0.10	0.81	979	60	12.0	EUR EC ¹⁾²⁾	01347	PU 10 ¹⁾	01734	PA 10 ¹⁾	01735
Type SVS EC, Single-phase alternating current, 230 V, 50/60 Hz, EC motor, IP44																
SVS EC 160 A ³⁾	00017	160	570	3610	51	0.10	0.80	979	60	8.0	EUR EC ¹⁾²⁾	01347	PU 10 ¹⁾	01734	PA 10 ¹⁾	01735
SVS EC 160 B	00018	160	780	2920	52	0.12	0.97	979	60	7.5	EUR EC ¹⁾²⁾	01347	PU 10 ¹⁾	01734	PA 10 ¹⁾	01735

¹⁾ Multiple EC fans can normally be connected. ²⁾ alternative electronic diff. pressure/ temperature controller (EDR/VET, No. 01437/01438) or three level speed switch (SU/SA, No. 04266/04267), see accessories. ³⁾ Performance diagram at www.HeliosSelect.de.

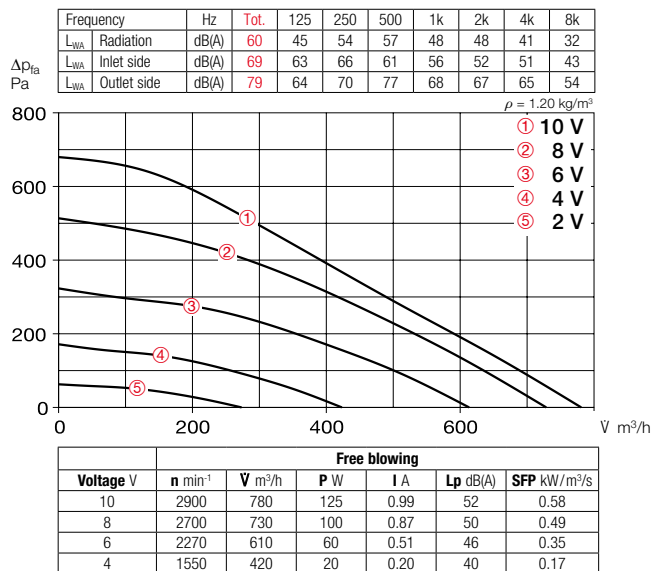
Performance curves SB EC 160 A



Performance curves SB EC 160 B



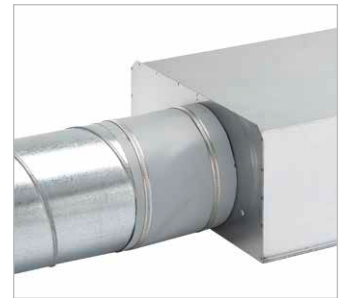
Performance curves SVS EC 160 B



Accessories

Flexible connecting sleeve

FM 160 Ref. no. 01684
Includes 2 hose clamps; for installation between fan and duct system. Prevents structure-borne noise transmission and bridges installation tolerances.
2 pcs required for inlet and outlet side application.



External wall shutter

VK 160 Ref. no. 00892
Automatic made of plastic, white.



External wall cover grille

G 160 Ref. no. 00893
Made of plastic, white.



Protection grille

SGR 160 Ref. no. 05069
For inlet and outlet side installation.
Made of galvanised steel.



Duct shutter

RSK 160 Ref. no. 05669
Automatic, made of metal.



Flexible cross talk silencer

FSD 160 Ref. no. 00678
Made of aluminium pipe with double-sided plug-in connectors. Sound insulation lining 50 mm thick, installation length 1 m.



Air filter box

LFBR 160 Coarse 70%* 08578
LFBR 160 ePM1 50%* 08532
Air filter with large surface area, for installation in pipeline.

Electric heating element

EHR-R 1.2/160 1.2 kW No. 09434
EHR-R 2.4/160 2.4 kW No. 09435
EHR-R 5/160 5.0 kW No. 08710
– with integrated temp. control
EHR-R 2.4/160 TR 2.4 kW No. 05294
Room or duct sensor (TFK/TFR, Accessories) required.



Temperature control system for electric heating element

EHR-R
EHS Ref. no. 05002



Warm water heating element

WHR 160 Ref. no. 09481
Compact heat exchanger for installation in duct system.



Temperature control system for warm water heating element

WHST 300 T38 No. 08817



* See product page 484 for detailed description.