

SB EC 200



Virtually silent with high volume output and pressure performance. Ideal for cleaning and inspection.



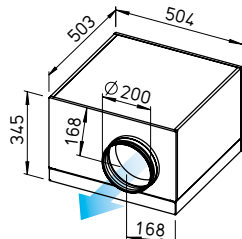
SVS EC 200



Lowest installation height. Ideal for limited installation spaces. With sound-insulating mineral wool lining for particularly low-noise operation.

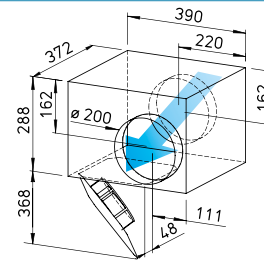


Dimensions SB EC 200



Dim. in mm

Dimensions SVS EC 200



Dim. in mm

Common features SilentBox SB EC and SlimVent SVS EC

Installation

No restrictions in any position (horizontal, vertical, diagonal) through corresponding installation for supply or extract ventilation. Mounting bracket included in delivery.

Drive

Energy-saving, speed-controllable EC external rotor motor in protection category IP44 with the highest level of efficiency. Maintenance-free and radio interference-free, ball bearing mounted. Motor and impeller dynamically balanced for low-noise operation.

Power control

Continuously variable speed control with internal (delivery) or external potentiometer or conti-

nuously variable speed control with universal control system (see table). Performance levels are shown in the performance curve as an example.

Motor protection

Integrated electronic temperature monitoring system for EC motor and electronics.

Noise

See page 417.

Description SilentBox EC

Casing

Designed as a silencer. Equipped with abrasion-resistant, sound-absorbing mineral fibre boards (50 mm). Removable cover with locking clamp. Freely accessible fan. Removable motor-impeller unit, the removal area must be considered. Inlet and outlet side connectors with

rubber lip seal corresponds to standard duct Ø. All parts made of galvanised steel sheet.

Impeller

With backward curved blades. Inlet via nozzle.

Electrical connection

Terminal box (IP54) mounted to external cable.

Protection category

IP44 with connected duct system.

Description SlimVent SVS EC

Casing

Extremely flat casing with sound-insulating, over 50 mm thick mineral wool lining and glass fibre surface. The acoustic box placed in front of the fan wheel significantly reduces the inlet-side noises. The radiated

noises are reduced to a lesser extent (see noise data above the performance diagrams).

The retractable motor-impeller unit allows inspection and cleaning without dismantling the system components. The removal area of the motor-impeller unit must be considered.

Impeller

Energy-saving centrifugal impeller with backward curved blades made of high-quality plastic.

Electrical connection

Terminal box (IP54) mounted to external cable.

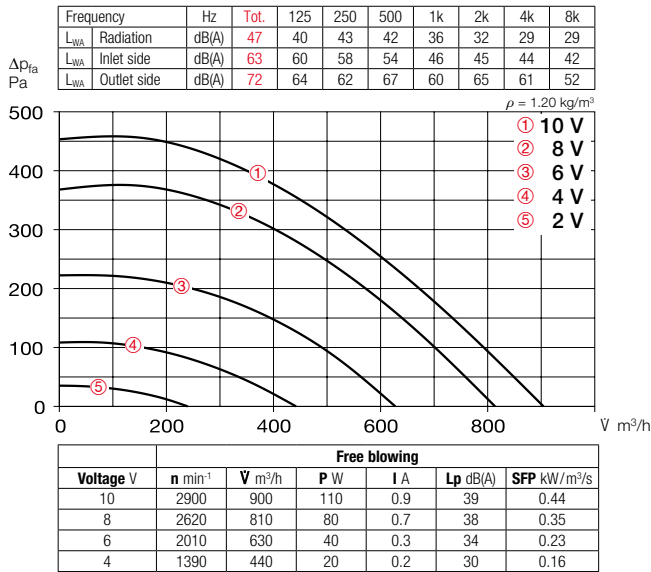
Protection category

IP44 with connected duct system.

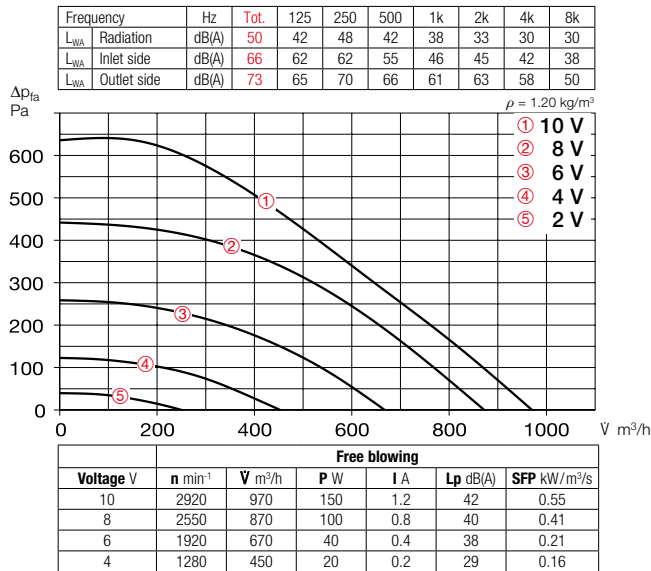
Type	Ref. no.	Connection Ø	Flow rate Free blowing	Rated speed	Sound press. case radiation	Power consum.	Current consum.	Wiring diagram	Max. air flow temp.	Wgt net aprx.	Universal control system		Speed potentiometer			
											Type	Ref. no.	Type	Ref. no.		
Type SB EC, Single-phase alternating current, 230 V, 50/60 Hz, EC motor, IP54 (A), IP44 (B)																
SB EC 200 A	06138	200	900	2830	39	0.12	1.00	979	60	17	EUR EC ¹⁾²⁾	01347	PU 10 ¹⁾	01734	PA 10 ¹⁾	01735
SB EC 200 B	09626	200	970	2890	42	0.15	1.20	979	60	17	EUR EC ¹⁾²⁾	01347	PU 10 ¹⁾	01734	PA 10 ¹⁾	01735
Type SVS EC, Single-phase alternating current, 230 V, 50/60 Hz, EC motor, IP44																
SVS EC 200 A ³⁾	03390	200	910	2780	49	0.12	1.02	979	60	8.1	EUR EC ¹⁾²⁾	01347	PU 10 ¹⁾	01734	PA 10 ¹⁾	01735
SVS EC 200 B	00019	200	1010	2880	52	0.15	1.22	979	60	8.3	EUR EC ¹⁾²⁾	01347	PU 10 ¹⁾	01734	PA 10 ¹⁾	01735

¹⁾ Multiple EC fans can normally be connected. ²⁾ alternative electronic diff. pressure/ temperature controller (EDR/VETR, No. 01437/01438) or three level speed switch (SU/SA, No. 04266/04267), see accessories. ³⁾ Performance diagram at www.HeliosSelect.de.

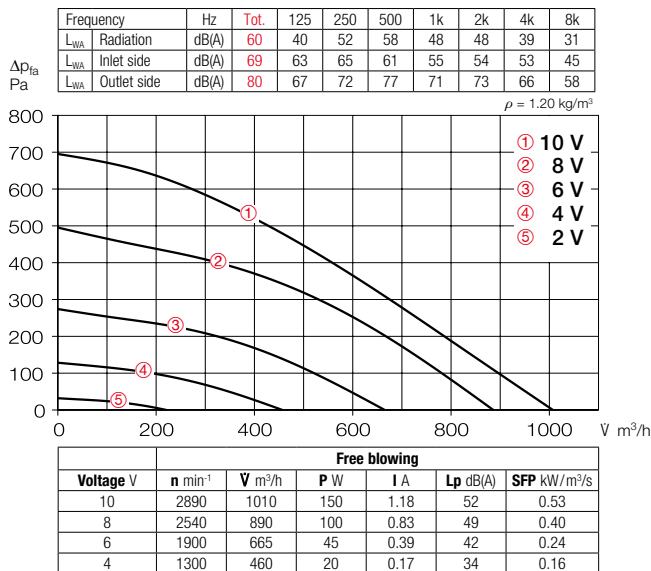
Performance curves SB EC 200 A



Performance curves SB EC 200 B

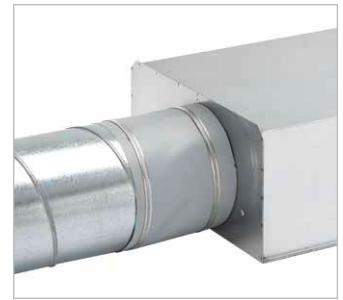


Performance curves SVS EC 200 B



Accessories

Flexible connecting sleeve
FM 200 Ref. no. 01670
 Includes 2 hose clamps; for installation between fan and duct system. Prevents structure-borne noise transmission and bridges installation tolerances.
 2 pcs required for inlet and outlet side application.



External wall shutter
VK 200 Ref. no. 00758
 Made of plastic, light grey.



External wall cover grille
RAG 200 Ref. no. 00750
 For placement in front of air inlet and outlet openings in facades.
 Made of plastic, light grey.



Protection grille
SGR 200 Ref. no. 05066
 For inlet and outlet side installation.
 Made of galvanised steel.



Duct shutter
RSK 200 Ref. no. 05074
 Automatic, made of metal.



Flexible cross talk silencer
FSD 200 Ref. no. 00679
 Made of aluminium pipe with double-sided plug-in connectors. Sound insulation lining 50 mm thick, installation length 1 m.



Air filter box
LFBR 200 Coarse 70%* 08579
LFBR 200 ePM1 50%* 08533
 Air filter with large surface area, for installation in pipeline.

Electric heating element
EHR-R 1.2/200 1.2 kW No. 09436
EHR-R 2/200 2.0 kW No. 09437
EHR-R 5/200 5.0 kW No. 08711
 – with integrated temp. control
EHR-R 5/200 TR 5.0 kW No. 05295
 Room or duct sensor (TFK/TFR, Accessories) required.



Temperature control system for electric heating element
EHR-R
EHS Ref. no. 05002



Warm water heating element
WHR 200 Ref. no. 09482
 Compact heat exchanger for installation in duct system.



Temperature control system for warm water heating element
WHST 300 T38 No. 08817



EC round duct fans

* See product page 484 for detailed description.