

SB EC 250



Virtually silent with high volume output and pressure performance. Ideal for cleaning and inspection.



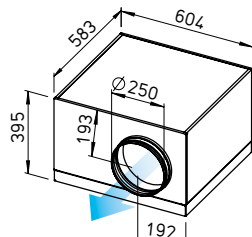
SVS EC 250



Lowest installation height. Ideal for limited installation spaces. With sound-insulating mineral wool lining for particularly low-noise operation.

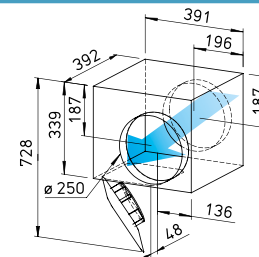


Dimensions SB EC 250



Dim. in mm

Dimensions SVS EC 250



Dim. in mm

Common features SilentBox SB EC and SlimVent SVS EC

Installation

No restrictions in any position (horizontal, vertical, diagonal) through corresponding installation for supply or extract ventilation. Mounting bracket included in delivery.

Drive

Energy-saving, speed-controllable EC external rotor motor in protection category IP44 with the highest level of efficiency. Maintenance-free and radio interference-free, ball bearing mounted. Motor and impeller dynamically balanced for low-noise operation.

Power control

Continuously variable speed control with internal (delivery) or external potentiometer or continuously variable speed control with

universal control system (see table). Performance levels are shown in the performance curve as an example.

Motor protection

Integrated electronic temperature monitoring system for EC motor and electronics.

Description SilentBox EC

Casing

Designed as a silencer. Equipped with abrasion-resistant, sound-absorbing mineral fibre boards (50 mm). Removable cover with locking clamp. Freely accessible fan. Removable motor-impeller unit, the removal area must be considered. Inlet and outlet side connectors with rubber lip seal corresponds to standard duct Ø. All parts made of galvanised steel sheet.

Impeller

With backward curved blades. Inlet via nozzle.

Electrical connection

Terminal box (IP54) mounted to external cable.

Protection category

IP44 with connected duct system.

Description SlimVent SVS EC

Casing

Extremely flat casing with sound-insulating, over 50 mm thick mineral wool lining and glass fibre surface. The acoustic box placed in front of the fan wheel significantly reduces the inlet-side noises. The radiated noises are reduced to a lesser extent (see noise data above the performance diagrams).

The retractable motor-impeller unit allows inspection and cleaning without dismantling the system components. The removal area of the motor-impeller unit must be considered.

Impeller

Energy-saving centrifugal impeller with backward curved blades made of high-quality plastic.

Electrical connection

Terminal box (IP54) mounted to external cable.

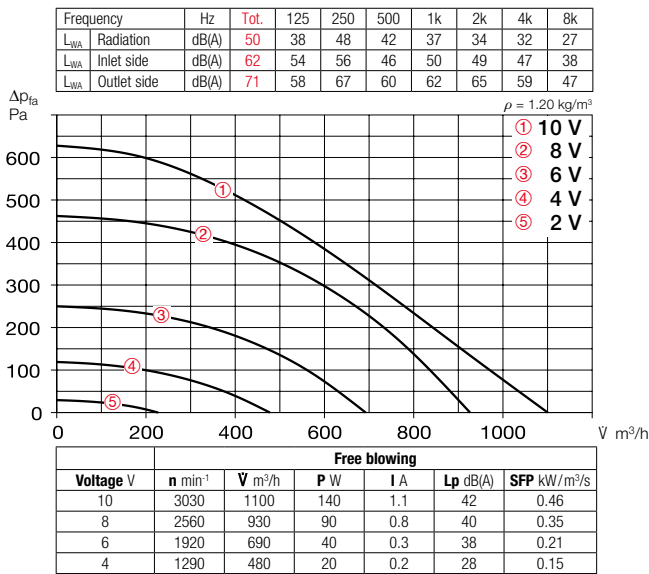
Protection category

IP44 with connected duct system.

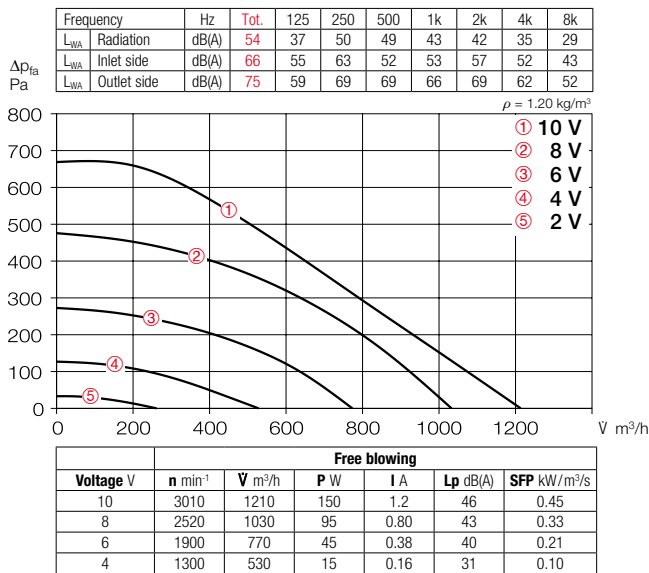
| Type | Ref. no. | Connection Ø | Flow rate Free blowing | Rated speed | Sound press. case radiation | Power consum. | Current consum. | Wiring diagram | Max. air flow temp. | Wgt net aprx. | Universal control system | | Speed potentiometer | | | |
|---|----------|--------------|------------------------|-------------------|-----------------------------|---------------|-----------------|----------------|---------------------|---------------|--------------------------|----------|---------------------|----------|---------------------|----------|
| | | | | | | | | | | | Type | Ref. no. | Type | Ref. no. | Type | Ref. no. |
| | | mm | l/s | min ⁻¹ | dB(A) in 1 m | kW | A | No. | + °C | kg | Type | Ref. no. | Type | Ref. no. | Type | Ref. no. |
| Type SB EC, Single-phase alternating current, 230 V, 50/60 Hz, EC motor, IP44 | | | | | | | | | | | | | | | | |
| SB EC 250 | 09627 | 250 | 1190 | 2790 | 42 | 0.15 | 1.18 | 979 | 60 | 23 | EUR EC ¹⁾²⁾ | 01347 | PU 10 ¹⁾ | 01734 | PA 10 ¹⁾ | 01735 |
| Type SVS EC, Single-phase alternating current, 230 V, 50/60 Hz, EC motor, IP44 | | | | | | | | | | | | | | | | |
| SVS EC 250 | 06125 | 250 | 1210 | 2920 | 46 | 0.15 | 1.21 | 979 | 60 | 9.6 | EUR EC ¹⁾²⁾ | 01347 | PU 10 ¹⁾ | 01734 | PA 10 ¹⁾ | 01735 |

¹⁾ Multiple EC fans can normally be connected. ²⁾ alternative electronic diff. pressure/ temperature controller (EDR/VETR, No. 01437/01438) or three level speed switch (SU/SA, No. 04266/04267), see accessories.

Performance curves SB EC 250



Performance curves SVS EC 250



Noise

The total level and range are specified above the performance diagram for:

- Case-radiated sound power.
- Inlet side sound power
- Outlet side sound power.

The case-radiated noise as sound pressure at 1 m (free field conditions) is also specified in the type table and the table below the performance curve.

Accessory details Page

| | |
|---|--------------|
| Filters, heating elements and silencers | 481 ff. |
| Temperature control systems for heating elements | 487, 491 ff. |
| Flexible ventilation ducts, ventilation grilles, fittings, roof outlets | 561 ff. |
| Disc valves | 582 ff. |
| Universal control system, electronic controllers, speed potentiometer | 613 ff. |

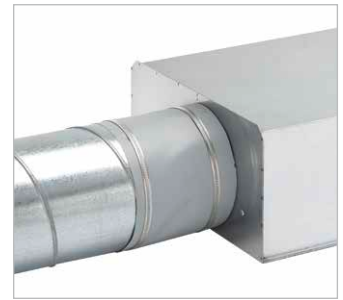
Accessories

Flexible connecting sleeve

FM 250 Ref. no. 01672

Includes 2 hose clamps; for installation between fan and duct system. Prevents structure-borne noise transmission and bridges installation tolerances.

2 pcs required for inlet and outlet side application.



External wall shutter

VK 250 Ref. no. 00759

Automatic made of plastic, light grey.



External wall cover grille

RAG 250 Ref. no. 00751

For placement in front of air inlet and outlet openings in facades.

Made of plastic, light grey.



Protection grille

SGR 250 Ref. no. 05067

For inlet and outlet side installation. Made of galvanised steel.



Duct shutter

RSK 250 Ref. no. 05673

Automatic, made of metal.



Flexible cross talk silencer

FSD 250 Ref. no. 00680

Made of aluminium pipe with double-sided plug-in connectors. Sound insulation lining 50 mm thick, installation length 1 m.



Air filter box

LFBR 250 Coarse 70%* 08580

LFBR 250 ePM1 50%* 08534

Air filter with large surface area, for installation in pipeline.



Electric heating element

EHR-R 6/250 6.0 kW No. 08712

– with integrated temp. control

EHR-R 6/250 TR 6.0 kW No. 05296

Room or duct sensor (TFK/TFR, Accessories) required.



Temperature control system for electric heating element

EHR-R

EHS

Ref. no. 05002

Warm water heating element

WHR 250 Ref. no. 09483

Compact heat exchanger for installation in duct system.



Temperature control system for warm water heating element

WHS HE

Ref. no. 08319



* See product page 484 for detailed description.