

SB 160



Efficiency class

D SB + accessories*

Virtually silent with high volume output and pressure performance. Ideal for cleaning and inspection.

SVS 160

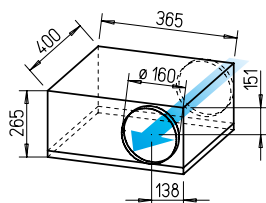


Efficiency class

C SVS 160 L + accessories*

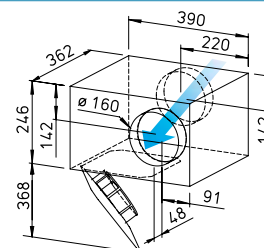
Lowest installation height. Ideal for limited installation spaces. With sound-insulating mineral wool lining for particularly low-noise operation.

Dimensions SB 160



Dim. in mm

Dimensions SVS 160



Dim. in mm

Common features SB and SVS

- Installation see page 424.
- Motor see page 424.
- Noise see page 425.

Description SilentBox

■ **Casing**

Designed as a silencer. Equipped with abrasion-resistant, sound-absorbing mineral fibre boards (50 mm). Removable cover with locking clamp. Freely accessible fan. Removable motor-impeller unit, the removal area must be considered. Inlet and outlet side connectors with rubber lip seal corresponds to standard duct Ø. All parts made of galvanised steel sheet.

■ **Impeller**

Low-noise forward curved impeller in aerodynamically optimised volute casing, made of galvanised steel sheet. Inlet via nozzle.

■ **Electrical connection**

Terminal box (IP54) mounted to external cable (aprx. 60 cm long).

■ **Motor protection**

Through built-in thermal contacts wired in series to the winding, which automatically activated and deactivate again after cooling.

■ **Power control**

From 0 – 100 % possible using electronic controller or step transformer (see table).

■ **Protection category**

IP44

Description SlimVent SVS

■ **Casing**

Extremely flat casing with sound-insulating, over 50 mm thick mineral wool lining and glass fibre surface. The acoustic box placed in front of the fan wheel significantly reduces the inlet-side noises. The radiated noises are reduced to a lesser extent (see noise data above the performance diagrams).

- The retractable motor-impeller unit allows inspection and cleaning without dismantling the system components. The removal area of the motor-impeller unit must be considered.

■ **Impeller**

Energy-saving centrifugal impeller with backward curved blades made of high-quality plastic. Dy-

namically balanced for low-noise operation.

■ **Electrical connection**

Terminal box (IP54) mounted to external cable.

■ **Motor protection**

Through built-in thermal contacts wired in series to the winding, automatic deactivation and reactivation after cooling.

■ **Power control**

From 0 – 100 % possible using electronic controller or step transformer (see table) or two level operation with type DS 2/2 (accessories).

DS 2/2 Ref. no. 01267

■ **Protection category**

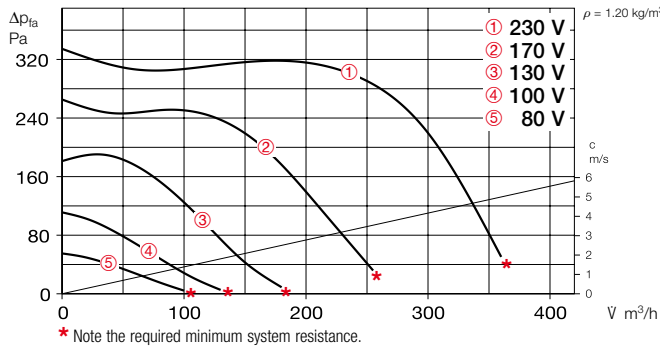
IP44 with connected duct system.

Type	Ref. no.	Flow rate Free blowing	Rated speed	Sound press. case radiation	Power consum.	Power consum. at rated voltage	Power consum. with control	Wiring diagram	Max air flow temp. at rated voltage	Wgt net aprx.	Transformer speed controller 5-step	Electronic ²⁾ Speed controll., cont. var. flush-mount. / surf-mount.																									
												Type	Ref. no.	Type	Ref. no.																						
													V m ³ /h	min ⁻¹	db(A) in 1m	W	A	A	No.	+ °C	+ °C	kg	Type	Ref. no.	Type	Ref. no.											
Type SB, Single-phase alternating current, 230 V, 50 Hz, Capacitor motor, IP44 (B), IP33 (D)																																					
SB 160 B	09508	360	1650	36	105	0.46	0.46	508	65	65	13.0	TSW 1.5	01495	ESU1 / ESA 1	00236 / 00238																						
SB 160 D	09563	580	2220	43	164	0.72	0.72	508	60	60	10.3	TSW 1.5	01495	ESU1 / ESA 1	00236 / 00238																						
Type SVS, Single-phase alternating current, 230 V, 50 Hz, Capacitor motor, IP33																																					
SVS 160 K	00131	440/300 ¹⁾	2560/1730 ¹⁾	44/35 ¹⁾	61/45 ¹⁾	0.26/0.20 ¹⁾	0.26 ¹⁾	934.1	60	60	7.6	TSW 1.5	01495	ESU1 / ESA 1	00236 / 00238																						
SVS 160 L	02653	670/390 ¹⁾	2520/1530 ¹⁾	50/39 ¹⁾	108/69 ¹⁾	0.47/0.30 ¹⁾	0.45 ¹⁾	934.1	60	60	7.8	TSW 1.5	01495	ESU1 / ESA 1	00236 / 00238																						

¹⁾ Values refer to the two performance levels (see performance diagram). ²⁾ Transformer control units must be provided in noise-relevant cases. Electronic phase angle control can cause disturbing magnetisation humming. * See ErP product data sheet at www.HeliosSelect.de.

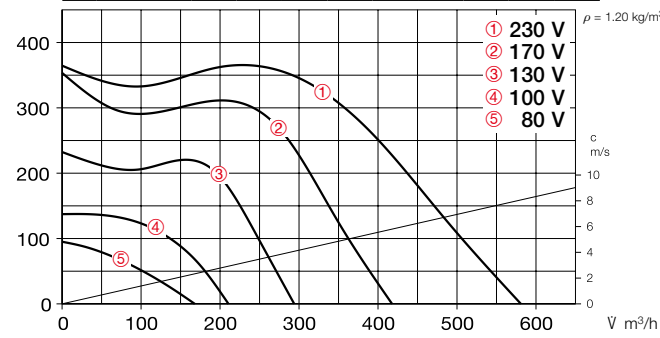
Performance curves SB 160 B

Frequency	Hz	Tot.	125	250	500	1k	2k	4k	8k
L _{WA} Radiation		dB(A)	43	40	39	34	28	27	27
L _{WA} Inlet side		dB(A)	61	59	56	50	44	39	26
L _{WA} Outlet side		dB(A)	68	61	61	62	61	58	44



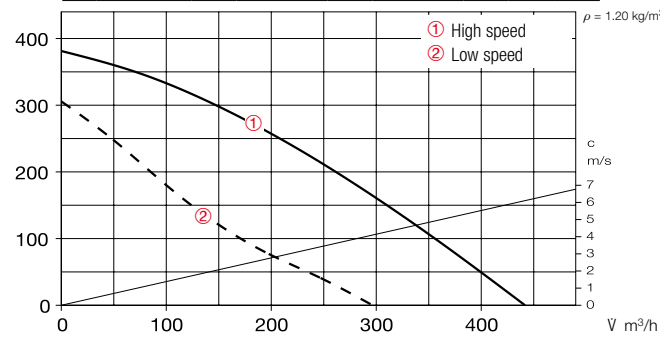
Performance curves SB 160 D

Frequency	Hz	Tot.	125	250	500	1k	2k	4k	8k
L _{WA} Radiation		dB(A)	50	47	44	41	34	30	28
L _{WA} Inlet side		dB(A)	67	65	60	53	44	46	45
L _{WA} Outlet side		dB(A)	79	68	71	72	69	69	69



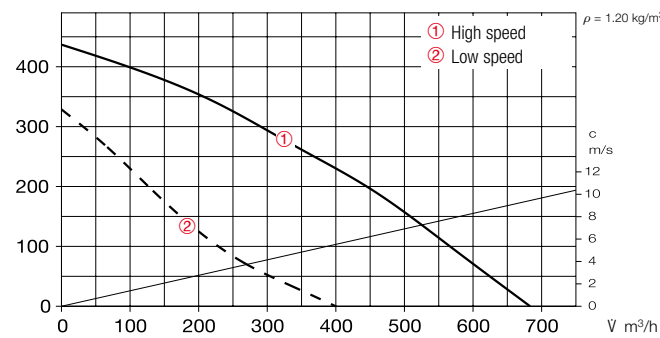
Performance curves SVS 160 K

Frequency	Hz	Tot.	250	500	1k	2k	4k	8k	
L _{WA} Radiation		dB(A)	52	38	47	50	40	37	31
L _{WA} Inlet side		dB(A)	63	58	61	50	40	45	38
L _{WA} Outlet side		dB(A)	70	60	66	65	59	56	48



Performance curves SVS 160 L

Frequency	Hz	Tot.	125	250	500	1k	2k	4k	8k
L _{WA} Radiation		dB(A)	58	40	53	55	46	44	38
L _{WA} Inlet side		dB(A)	66	60	64	58	50	47	35
L _{WA} Outlet side		dB(A)	75	62	67	73	66	63	51



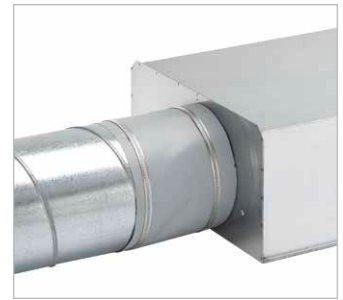
Accessories

Flexible connecting sleeve

FM 160 Ref. no. 01684

Includes 2 hose clamps; for installation between fan and duct system. Prevents structure-borne noise transmission and bridges installation tolerances.

2 pcs required for inlet and outlet side application.



External wall shutter

VK 160 Ref. no. 00892

Automatic made of plastic, white.



External wall cover grille

G 160 Ref. no. 00893

Made of plastic, white.



Protection grille

SGR 160 Ref. no. 05069

For inlet and outlet side installation. Made of galvanised steel.



Duct shutter

RSK 160 Ref. no. 05669

Automatic, made of metal.



Flexible cross talk silencer

FSD 160 Ref. no. 00678

Made of aluminium pipe with double-sided plug-in connectors. Sound insulation lining 50 mm thick, installation length 1 m.



Air filter box

LFBR 160 Coarse 70%* 08578

LFBR 160 ePM1 50%* 08532

Air filter with large surface area, for installation in pipeline.

Electric heating element

EHR-R 1.2/160 1.2 kWNo. 09434

EHR-R 2.4/160 2.4 kWNo. 09435

EHR-R 5/160 5.0 kWNo. 08710

– with integrated temp. control

EHR-R 2.4/160 TR 2.4 kWNo. 05294

Room or duct sensor (TFK/TFR, Accessories) required.



Temperature control system for electric heating element

EHR-R

EHS Ref. no. 05002

Warm water heating element

WHR 160 Ref. no. 09481

Compact heat exchanger for installation in duct system.



Temperature control system for warm water heating element

WHST 300 T38 No. 08817



* See product page 484 for detailed description.