

**SB 200**



**Efficiency class**

**B** SB 200 C + accessories\*

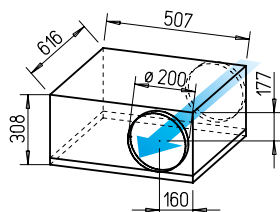
Virtually silent with high volume output and pressure performance. Ideal for cleaning and inspection.

**SVS 200**



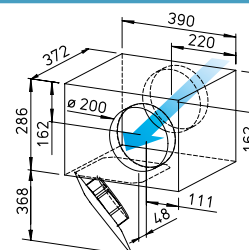
**Lowest installation height. Ideal for limited installation spaces.** With sound-insulating mineral wool lining for particularly low-noise operation.

**Dimensions SB 200**



Dim. in mm

**Dimensions SVS 200**



Dim. in mm

**Common features SB and SVS**

**Installation**

No restrictions in any position (horizontal, vertical, diagonal) through corresponding installation for supply or extract ventilation (exception: SVS must not be installed with the retractable motor-impeller unit upward).

**Motor**

Enclosed, ball bearing mounted external rotor motor with humidity protection, insulation class F, for continuous operation, maintenance-free and radio interference-free.

**Description SilentBox**

**Casing**

Designed as a silencer. Equipped with abrasion-resistant, sound-absorbing mineral fibre boards (50 mm). Removable cover with locking clamp. Freely accessible

fan. Removable motor-impeller unit, the removal area must be considered. Inlet and outlet side connectors with rubber lip seal corresponds to standard duct Ø. All parts made of galvanised steel sheet.

**Impeller**

With backward curved blades made of high-quality plastic. Inlet via nozzle.

**Electrical connection**

Terminal box (IP54) mounted to external cable (aprx. 60 cm long).

**Motor protection**

Through built-in thermal contacts wired in series to the winding, which automatically activated and deactivate again after cooling.

**Power control**

From 0 – 100 % possible using electronic controller or step

transformer (see table).

**Protection category IP44.**

**Description SlimVent SVS**

**Casing**

Extremely flat casing with sound-insulating, over 50 mm thick mineral wool lining and glass fibre surface. The acoustic box placed in front of the fan wheel significantly reduces the inlet-side noises. The radiated noises are reduced to a lesser extent (see noise data above the performance diagrams).

The retractable motor-impeller unit allows inspection and cleaning without dismantling the system components. The removal area of the motor-impeller unit must be considered.

**Impeller**

Energy-saving centrifugal impeller with backward curved blades made of high-quality plastic. Dynamically balanced for low-noise operation.

**Electrical connection**

Terminal box (IP54) mounted to external cable.

**Motor protection**

Through built-in thermal contacts wired in series to the winding, automatic deactivation and reactivation after cooling.

**Power control**

From 0 – 100 % using electronic controller or step transformer (see table).

**Protection category**

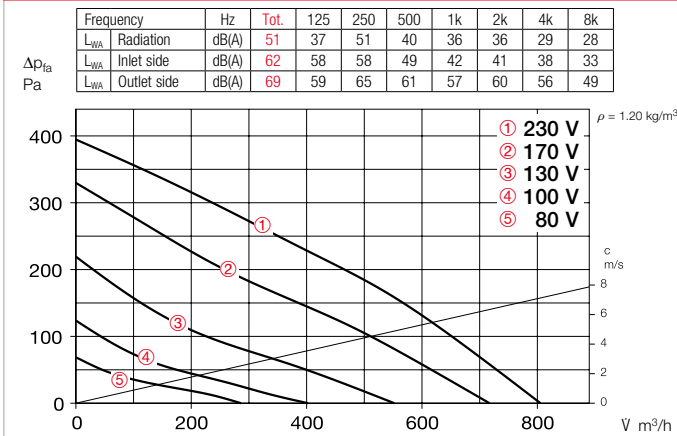
IP44 with connected duct system.

Type	Ref. no.	Flow rate Free blowing	Rated speed	Sound press. case radiation	Power consum.	Power consump.		Wiring diagram	Max air flow temp.		Wgt net aprx.	Transformer speed controller 5-step		Electronic <sup>1)</sup> Speed controll., cont. var. flush-mount. / surf-mount.	
						at rated voltage	with control		at rated voltage	with control		Type	Ref. no.	Type	Ref. no.
		V m <sup>3</sup> /h	min <sup>-1</sup>	db(A) in 1m	W	A	A	No.	+ °C	+ °C	kg	Type	Ref. no.	Type	Ref. no.
<b>Type SB, SB, Single-phase alternating current, 230 V, 50 Hz, Capacitor motor, IP33</b>															
SB 200 C	09510	810	2520	44	105	0.46	0.46	508	70	70	19.0	TSW 1.5	01495	ESU1/ESA 1	00236/00238
SB 200 D	09564	1030	2700	48	160	0.69	0.83	508	70	50	19.7	TSW 1.5	01495	ESU1/ESA 1	00236/00238
<b>Type SVS, Single-phase alternating current, 230 V, 50 Hz, Capacitor motor, IP33</b>															
SVS 200 K	00132	940	2710	55	163	0.71	0.83	508	70	50	9.2	TSW 1.5	01495	ESU1/ESA 1	00236/00238

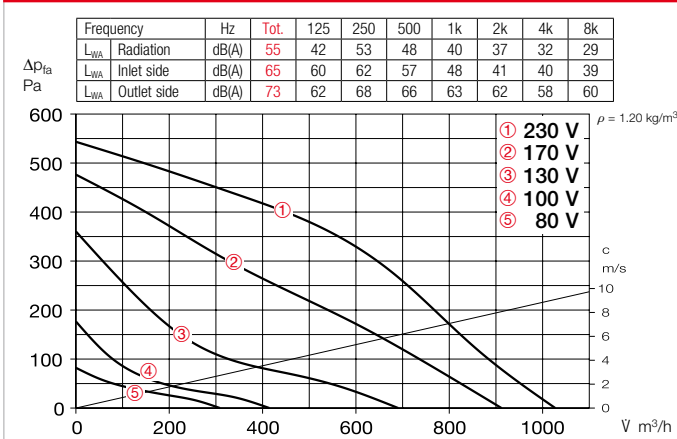
<sup>1)</sup> Transformer control units must be provided in noise-relevant cases. Electronic phase angle control can cause disturbing magnetisation humming.

\* See ErP product data sheet at www.HeliosSelect.de.

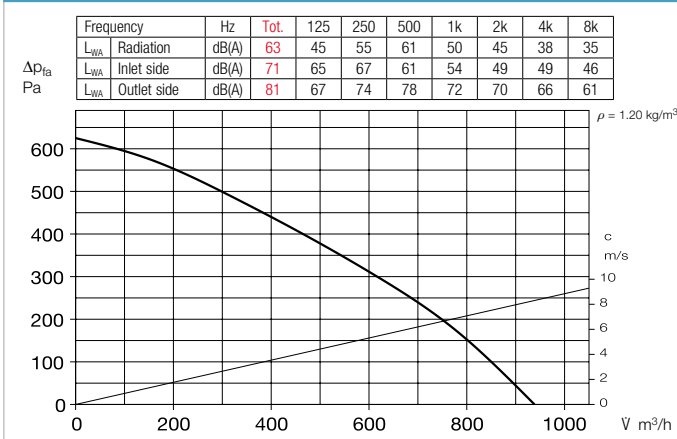
### Performance curves SB 200 C



### Performance curves SB 200 D



### Performance curves SVS 200 K



#### Noise

- The total level and range are specified above the performance diagram for
- Case-radiated sound power.
  - Inlet/outlet side sound power in dB(A).
  - The case-radiated noise as sound pressure at 1 m (free field conditions) are also specified in the type table.

#### Accessory details Page

Filters, heating elements and silencers	481 ff.
Temperature control systems for heating elements	487, 491 ff.
Flexible ventilation ducts, ventilation grilles, fittings, roof outlets	561 ff.
Disc valves	582 ff.
Universal control system, electronic controllers, speed potentiometer	613 ff.

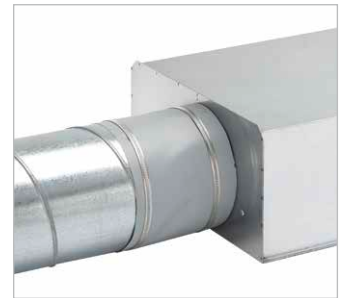
#### References Page

Techn. description	360
Selection table	361
Planning information	14 ff.
Modular system	358

#### Accessories

##### Flexible connecting sleeve

**FM 200** Ref. no. 01670  
Includes 2 hose clamps; for installation between fan and duct system. Prevents structure-borne noise transmission and bridges installation tolerances.  
2 pcs required for inlet and outlet side application.



##### External wall shutter

**VK 200** Ref. no. 00758  
Automatic made of plastic, light grey.



##### External wall cover grille

**RAG 200** Ref. no. 00750  
For placement in front of air inlet and outlet openings in facades. Made of plastic, light grey.



##### Protection grille

**SGR 200** Ref. no. 05066  
For inlet and outlet side installation. Made of galvanised steel.



##### Duct shutter

**RSK 200** Ref. no. 05074  
Automatic, made of metal.



##### Flexible cross talk silencer

**FSD 200** Ref. no. 00679  
Made of aluminium pipe with double-sided plug-in connectors. Sound insulation lining 50 mm thick, installation length 1 m.



##### Air filter box

**LFBR 200 Coarse 70%\*** 08579  
**LFBR 200 ePM1 50%\*** 08533  
Air filter with large surface area, for installation in pipeline.

##### Electric heating element

**EHR-R 1.2/200** 1.2 kWNo. 09436  
**EHR-R 2/200** 2.0 kWNo. 09437  
**EHR-R 5/200** 5.0 kWNo. 08711  
– with integrated temp. control  
**EHR-R 5/200 TR** 5.0 kWNo. 05295  
Room or duct sensor (TFK/TFR, Accessories) required.



##### Temperature control system for electric heating element EHR-R

**EHS** Ref. no. 05002

##### Warm water heating element

**WHR 200** Ref. no. 09482  
Compact heat exchanger for installation in duct system.



##### Temperature control system for warm water heating element

**WHST 300 T38** No. 08817



\* See product page 484 for detailed description.