

SB 250 C



Efficiency class

C SB + accessories*

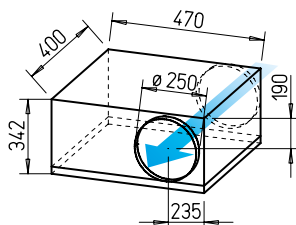
Virtually silent with high volume output and pressure performance. Ideal for cleaning and inspection.

SB 250 E



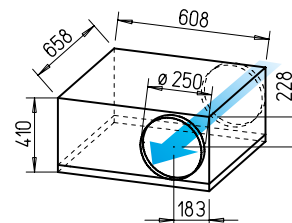
Lowest installation height. Ideal for limited installation spaces. With sound-insulating mineral wool lining for particularly low-noise operation.

Dimensions SB 250 C



Dim. in mm

Dimensions SB 250 E



Dim. in mm

Common features SB 250 C and E

Installation

No restrictions in any position (horizontal, vertical, diagonal) through corresponding installation for supply or extract ventilation.

Motor

Enclosed, ball bearing mounted external rotor motor with humidity protection, insulation class F, for continuous operation, maintenance-free and radio interference-free.

Motor protection

Through built-in thermal contacts wired in series to the winding, which automatically activate and deactivate again after cooling.

Power control

From 0 – 100 % possible using electronic controller or step transformer (see table).

Electrical connection

Terminal box (IP54) mounted to external cable (aprx. 60 cm long).

Protection category

IP44.

Description SB 250 C

Casing

Designed as a silencer. Equipped with abrasion-resistant, sound-absorbing mineral fibre boards (50 mm). Removable cover with locking clamp. Freely accessible fan. Removable motor-impeller unit, the removal area must be considered. Inlet and outlet side connectors with rubber lip seal corresponds to standard duct Ø. All parts made of galvanised steel sheet.

Impeller

Forward curved impeller in aerodynamically optimised volute casing, made of galvanised steel sheet. Inlet via nozzle.

Description SB 250 E

Casing

Designed as a silencer. Equipped with abrasion-resistant, sound-absorbing mineral fibre boards (50 mm). Removable cover with locking clamp. Freely accessible fan. Removable motor-impeller unit. Inlet and outlet side connectors with rubber lip seal corresponds to standard duct Ø. All parts made of galvanised steel sheet.

Impeller

With backward curved blades made of high-quality plastic. Dynamically balanced for low-noise operation. Inlet via nozzle.

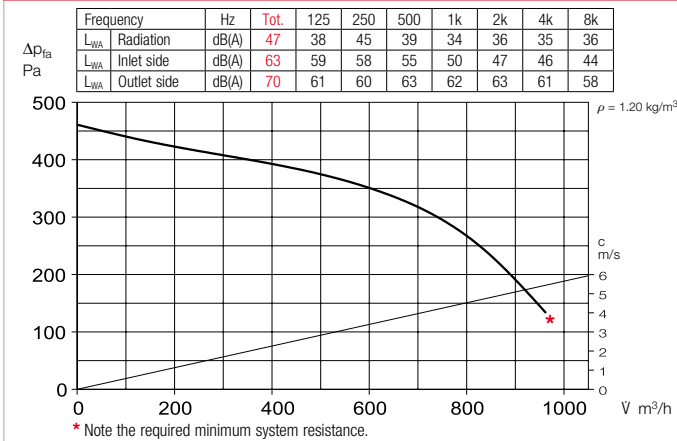
Reference	Page
Techn. description	360
Selection table	361
Planning information	14 ff.
Modular system	358

Type	Ref. no.	Flow rate	Rated speed	Sound press. case radiation	Power consum.	Power consum. at rated voltage	Power consum. with control	Wiring diagram	Max air flow temp. at rated voltage	Wgt net aprx.	Transformer speed controller 5-step	Electronic ¹⁾ Speed controll., cont. var. flush-mount. / surf-mount.		
		V m ³ /h	min ⁻¹	db(A) in 1m	W	A	A	No.	+ °C	kg	Type	Ref. no.	Type	Ref. no.
Type SB, Single-phase alternating current, 230 V, 50 Hz, Capacitor motor, IP44 (C), IP33 (E)														
SB 250 C	09512	960	2120	43	255	1.13	1.13	508	50	18.0	TSW 1.5	01495	ESU 3 / ESA 3	00237 / 00239
SB 250 E	09565	1080	2690	45	165	0.71	0.86	508	70	33.4	TSW 1.5	01495	ESU 1 / ESA 1	00236 / 00238

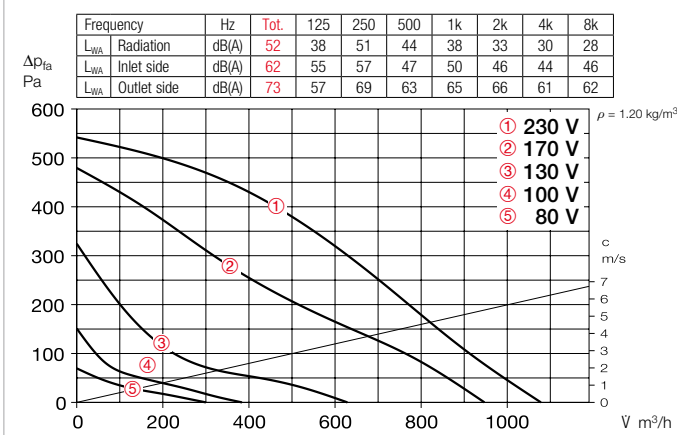
¹⁾ Transformer control units must be provided in noise-relevant cases. Electronic phase angle control can cause disturbing magnetisation humming.

* See ErP product data sheet at www.HeliosSelect.de.

Performance curves SB 250 C



Performance curves SB 250 E



Noise

The total level and range are specified above the performance diagram for

- Case-radiated sound power.
- Inlet/outlet side sound power in dB(A).
- The case-radiated noise as sound pressure at 1 m (free field conditions) are also specified in the type table.

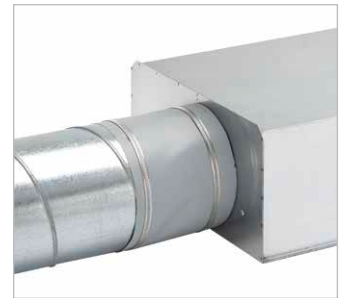
Accessory details Page

Filters, heating elements and silencers	481 ff.
Temperature control systems for heating elements	487, 491 ff.
Flexible ventilation ducts, ventilation grilles, fittings, roof outlets	561 ff.
Disc valves	582 ff.
Universal control system, electronic controllers, speed potentiometer	613 ff.

Accessories

Flexible connecting sleeve

FM 250 Ref. no. 01672
Includes 2 hose clamps; for installation between fan and duct system. Prevents structure-borne noise transmission and bridges installation tolerances. 2 pcs required for inlet and outlet side application.



External wall shutter

VK 250 Ref. no. 00759
Automatic made of plastic, light grey.



External wall cover grille

RAG 250 Ref. no. 00751
For placement in front of air inlet and outlet openings in facades. Made of plastic, light grey.



Protection grille

SGR 250 Ref. no. 05067
For inlet and outlet side installation. Made of galvanised steel.



Duct shutter

RSK 250 Ref. no. 05673
Automatic, made of metal.



Flexible cross talk silencer

FSD 250 Ref. no. 00680
Made of aluminium pipe with double-sided plug-in connectors. Sound insulation lining 50 mm thick, installation length 1 m.



Air filter box

LFBR 250 Coarse 70%* 08580
LFBR 250 ePM1 50%* 08534
Air filter with large surface area, for installation in pipeline.

Electric heating element

EHR-R 6/250 6.0 kW No. 08712
– with integrated temp. control
EHR-R 6/250 TR 6.0 kW No. 05296
Room or duct sensor (TFK/TFR, Accessories) required.



Temperature control system for electric heating element EHR-R

EHS Ref. no. 05002



Warm water heating element

WHR 250 Ref. no. 09483
Compact heat exchanger for installation in duct system.



Temperature control system for warm water heating element

WHS HE Ref. no. 08319



* See product page 484 for detailed description.