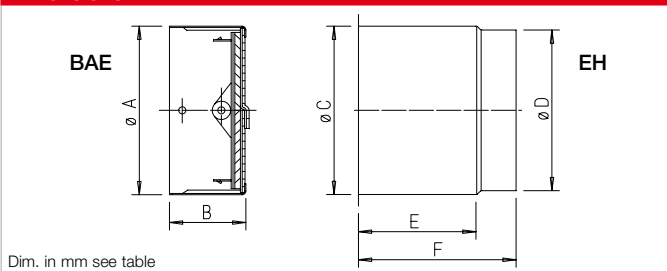


BAE

Approval Z-41.3-696
no maintenance conditions

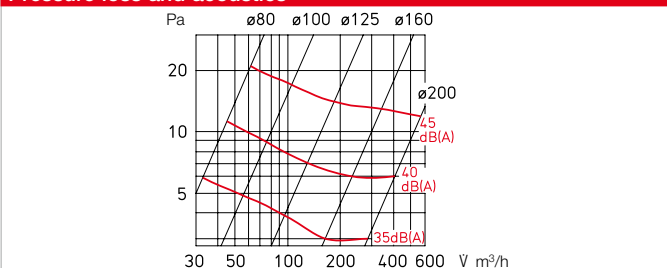


Dimensions BAE



Dim. in mm see table

Pressure loss and acoustics



Application

Damper element to prevent the spread of fire and smoke. For installation in ventilation shafts and ducts with the required fire resistance class K 90-18017. Suitable for insertion in spiral ducts or for installation in walls and non-fire-resistant suspended ceilings using installation sleeve EH (accessories) as well as in fire-resistant ceilings as ceiling seals.

- Installation outside of the shaft wall is possible.
- Any air flow direction, i.e. for supply air and extract air.
- Low flow resistance, even at high air flow rates.
- Connection to fume extractor or extraction hood is possible.
- Low-noise.
- Application in residential and commercial areas, e.g. internal toilets, kitchenettes, etc.

Function

When an air temperature of +72 °C is exceeded, the integrated fusible link releases the semi-circular damper blades which close abruptly by spring force. Two safety brackets lock the shutters.

- Design**
Cylindrical duct sleeve with butterfly valve and integrated fusible link.

- Delivery**
Shrink-wrapped in plastic film.

Official approval

The proof of suitability of this damper element for ventilation systems according to DIN 18017 has been provided by means of appropriate tests. General technical approval from the DIBt with no. Z-41.3-696.

- Installation and setting**
 - The installation and operating instructions contain exact specifications with regard to application and installation.
 - The specifications in the related approval must be observed.

Special features

- No maintenance conditions.
- Cleaning and inspection together with the associated ventilation system.
- Insertion in spiral ducts without additional brickwork frame.

Accessories

End switch

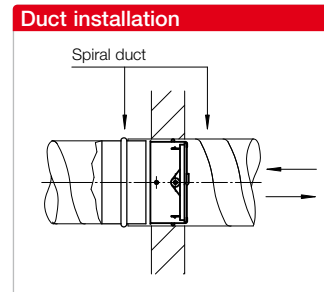
For BAE monitoring and signalling the operating status to the central building management system. Attachable to all ND, simple snap-in installation.

BA-S Ref. no. 02585
Switch as changeover contact IP67
Max. load 5–250 V / 6 A (2 A ind.)
Connect. cable 50 cm long / 3 x 0.34 mm²
Wiring diagram no. 830

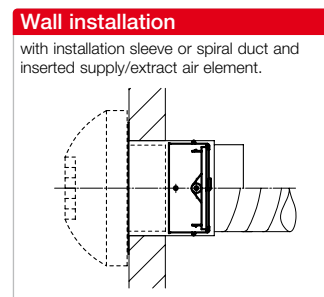


Installation examples

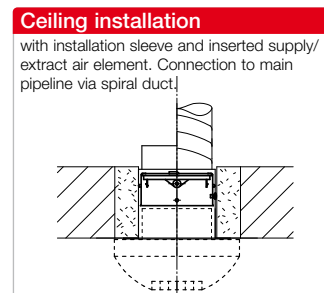
- Duct installation**
The element is installed by simple insertion (e.g. in spiral ducts) and fixed in the wall together with the duct. Installation is possible on both sides, regardless of the air flow direction.



- Wall installation**
With installation sleeve EH (accessories) in walls made from brickwork, aerated concrete or plasterboard, shaft partition walls in F 90 and F 30 or system-tested walls over 40 mm thick. Installation is possible on both sides, regardless of the air flow direction.



- Ceiling installation**
 - Possible in non-fire-resistant suspended ceilings.
 - In fire-resistant ceilings as ceiling seal if no free cross-section is required.



Order data

| Type | Ref. no. | Dim. in mm | | | Weight aprx. kg | Accessories: | | | | |
|---------|----------|------------|----|------|-----------------|---------------------|----------|------------------|-----|-----|
| | | Ø A | B | | | Installation sleeve | Ref. no. | Dimensions in mm | | |
| | | | | | | Ø C | Ø D | E | F | |
| BAE 80 | 02624 | 78 | 60 | 0.17 | | | | | | |
| BAE 100 | 02625 | 98 | 60 | 0.23 | EH 100 | 02639 | 100 | 98 | 110 | 140 |
| BAE 125 | 02626 | 123 | 60 | 0.30 | EH 125 | 02640 | 125 | 123 | 110 | 140 |
| BAE 160 | 02627 | 158 | 60 | 0.40 | EH 160 | 02641 | 160 | 158 | 110 | 140 |
| BAE 200 | 02628 | 198 | 60 | 0.55 | EH 200 | 02642 | 200 | 198 | 110 | 140 |