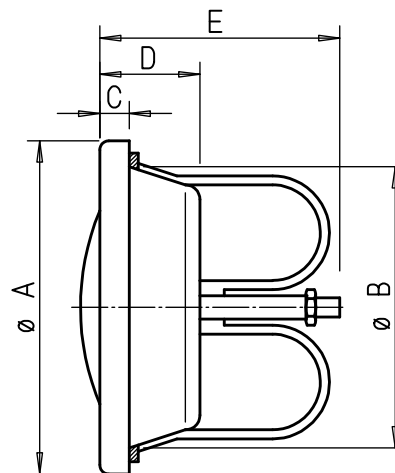


BTV

Approval Z-41.3-694
No maintenance conditions



Dimensions BTV



Dim. in mm see table

Application

Damper element to prevent the spread of fire and smoke. Suitable for installation in ventilation shafts and ducts with the required fire resistance class K 90-18017. For insertion in spiral ducts or for installation in walls and non-fire-resistant suspended ceilings using mounting ring (included in delivery).

Function

When an air temperature of +72 °C is exceeded, the fusible link responds. The built-in pressure spring automatically closes the valve.

Official approval

The proof of suitability of these damper elements with throttle device for ventilation systems according to DIN 18017 has been provided by means of appropriate tests and resulted in the approval from the DIBT, Z-41.3-694.

Special features

- No maintenance conditions.
- Cleaning and inspection together with the associated ventilation system.
- Officially tested fire protection disc valve with low air noise in case of high pressure drop.
- Installation in spiral ducts, shaft walls or non-fire-resistant ceilings.
- High damping value.
- Attractive, functional design.

- Simple adjustment, which cannot be changed by unauthorised persons, reduces the work load.
- Easily removable for inspection and cleaning, without unauthorised adjustment being possible.
- Large operating range.
- Application in residential and commercial areas, e.g. internal toilets, kitchenettes, etc.

Design

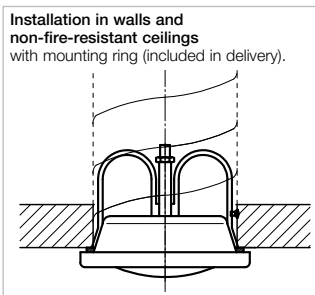
Sheet steel construction with white powder coating. Aerodynamically optimal design with inner cone and inlet ring.

Delivery

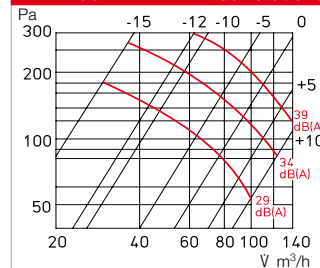
Includes mounting ring made of galvanised steel sheet; each valve in a separate polybag.

Installation and setting

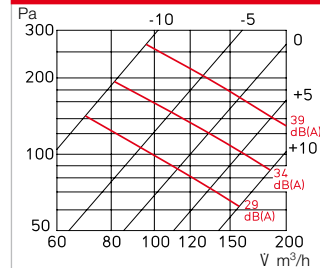
- The installation and operating instructions contain exact specifications with regard to application and installation.
- Can be inserted by hand due to bayonet closure. Associated wall ring included in delivery.
- The specifications in the related approval must be observed.
- Volume flow settings according to adjacent diagrams.
- Settings remain fixed and cannot be changed by unauthorised persons or without dismantling the fan.



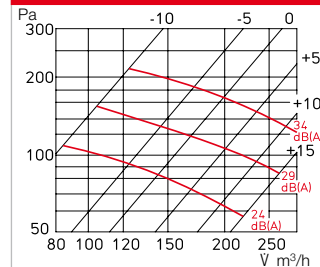
BTV 100 Disc rotations



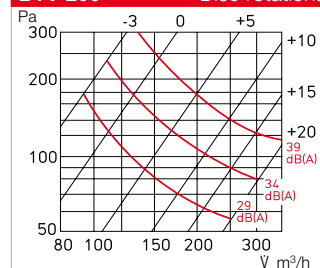
BTV 125 Disc rotations



BTV 160 Disc rotations



BTV 200 Disc rotations



Order data

Mounting ring included in delivery

Type	Ref. no.	Dimensions in mm					Weight approx. kg
		Ø A	Ø B	C	D	E	
BTV 100	02634	135	99	17	67	91	0.38
BTV 125	02635	161	124	18	68	103	0.48
BTV 160	02636	191	160	18	68	107	0.64
BTV 200	02637	242	199	17	67	124	0.77