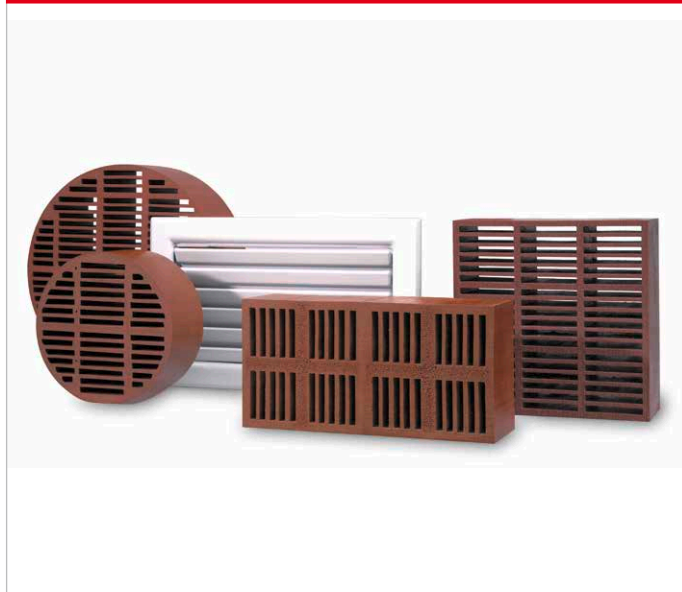


BLS



Fire protection ventilation tiles for the supply and extract ventilation of closed rooms and chambers to be protected against the spread of fire and smoke, such as e.g. installation shafts and cable ducts. They allow a constant, static air exchange which prevents heat accumulation in the closed chambers.

The tiles can also be used as inflow openings in crucial corridor walls (emergency escape routes), unless the openings are in the lower wall area.

Special features

- Fire resistance class F30 to F120 according to DIN 4102 (see box on right).
- Maintenance-free and inspection-free, no moving parts.
- Simple installation.
- Moisture-resistant, largely resistant to oils, petrol and weak acids.
- Use in individual cases on the basis of a project-related type approval (vBG).

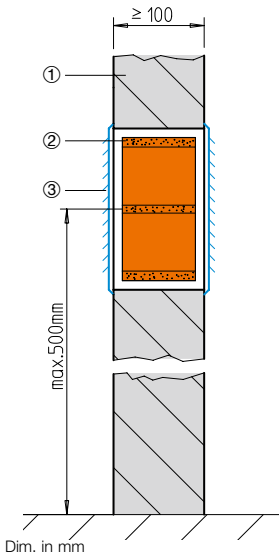
Installation does not affect the classification of the construction component. The ventilation tiles are made of organic intumescent material, which foams when exposed to heat, seals openings, slots and joints and thus prevents the passage of fire and smoke.

Each tile is delivered with two ventilation grilles made of galvanised steel sheet. After inserting the tile, the grilles are to be placed over it on one or both sides as mechanical protection and optical cladding, i.e. screwed to the building structure (wall).

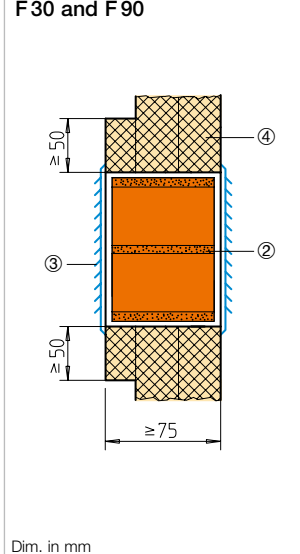
Rectangular fire protection ventilation tiles must be installed horizontally.

In case of walls of lower thickness, on-site doubling with fibre silicate frame in the BLS area.

Installation in brickwork and concrete walls F30 – F120



Installation in classified partition wall and cable duct F30 and F90



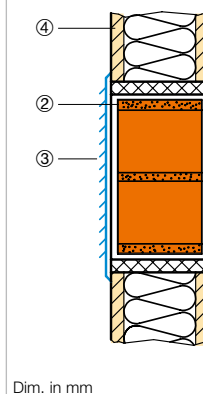
Legend

- ① Brickwork
- ② Ventilation tile
- ③ Ventilation grille, double-sided
- ④ Fibre silicate boards

| Fire resistance class | Ventilation tile installation in | Thick. mm |
|-----------------------|--|-----------|
| F 30 | Brickwork and concrete walls. Lightweight partition and shaft walls, classified cable ducts. | 75 |
| F 90 / F 120* | Brick and concrete walls. Lightweight partition, classified shaft walls and cable ducts. | 75 |

* Double-sided cover grille.

Installation in classified partition wall and cable duct F30 – F120



| Product range, dimensions in mm | | | | | | | | | |
|---------------------------------|---------------|----------------|-----|-----------|------------------|-----------------------------|-----|-----|-----|
| Ventilation module | | Install. open. | | Wgt. | Free ventilation | Cover grille | | | |
| Ref. no. | Type | Ø | D | max. i.L. | ca. kg | cross-sect. cm ² | W | H | |
| 02712 | BLS 100 | 100 | 75 | Ø 103 | 0.21 | 37 | 200 | 200 | |
| 02715 | BLS 125 | 125 | 75 | Ø 128 | 0.50 | 56 | 200 | 200 | |
| 02767 | BLS 150 | 150 | 75 | Ø 153 | 0.60 | 85 | 200 | 200 | |
| 02718 | BLS 160 | 160 | 75 | Ø 163 | 0.67 | 102 | 255 | 255 | |
| 02721 | BLS 200 | 200 | 75 | Ø 204 | 1.12 | 158 | 255 | 255 | |
| | | W | H | D | | | W | H | |
| 02766 | BLS 100 / 100 | 93 | 93 | 75 | 103 x 103 | 0.38 | 35 | 200 | 200 |
| 02724 | BLS 150 / 150 | 150 | 150 | 75 | 153 x 153 | 0.80 | 115 | 255 | 255 |
| 02727 | BLS 200 / 100 | 186 | 93 | 75 | 203 x 103 | 0.75 | 69 | 305 | 155 |
| 02730 | BLS 200 / 150 | 200 | 150 | 75 | 203 x 153 | 1.15 | 153 | 305 | 200 |
| 02733 | BLS 300 / 150 | 300 | 150 | 75 | 303 x 153 | 1.56 | 230 | 405 | 205 |

Volume flows – Differential pressure

