

KR EC 355



(Fig. similar)

Designed for the delivery of contaminated air.



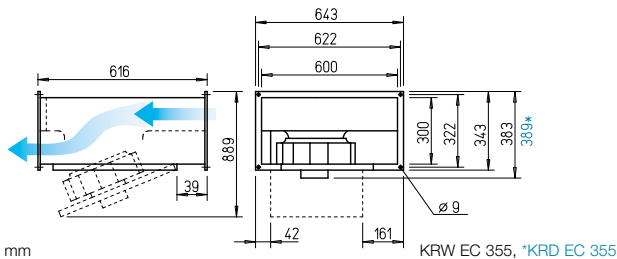
SKR EC 355 – sound-insulated



Lowest noise levels for inlet side and case radiation with high performance density. Use in extract air and intake air systems with specific noise level requirements.



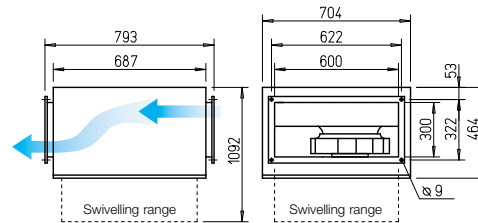
Dimensions KR EC 355



Dim. in mm

KRW EC 355, *KRD EC 355

Dimensions SKR EC 355 – sound-insulated



Dim. in mm

Features KR EC and SKR EC

- Highly efficient EC motor for the lowest operating costs.
- High-pressure and high-volume centrifugal fan with high efficiency.
- Particularly easy to service (cleaning) due to retractable motor-impeller unit.
- Easily accessible for cleaning and thus designed for the delivery of contaminated air.
- Linear throughflow.
- Compact design, convenient installation.

Description

- Casing KR EC**
Made of galvanised steel sheet. Double-sided rectangular duct flange profiles (20 mm) for installation in rectangular duct system.
- Casing SKR EC**
Like above, but with additional sound insulation cladding made of 50 mm thick mineral fibre boards. With a sound absorbing lining on the inside.

Special features SKR EC

- Lowest noise levels for inlet side and case radiation with high performance density.

Common features KR EC and SKR EC

- Impeller**
Centrifugal, with backward curved blades made of aluminium. Aerodynamically optimised, inlet via nozzle.

Drive

Energy-saving, speed-controlable external rotor EC motor in protection category IP44 with the highest level of efficiency. Maintenance-free and radio interference-free, ball bearing mounted. Motor and impeller dynamically balanced.

Motor protection

Integrated electronic temperature monitoring system for EC motor and electronics.

Power control

Continuously variable speed control with potentiometer or continuously variable speed regulation with universal control system (see table). Performance levels are shown in the performance curve as an example.

Electrical connection

Terminal box (IP54) mounted to external cable.

Installation

Installation possible in any position. Note accessibility/swivel angle.

Noise

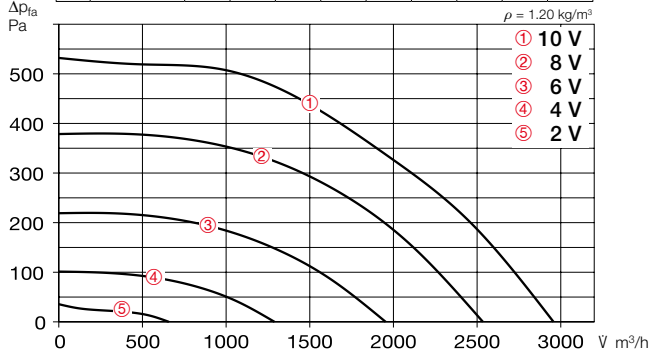
The total level and range are specified above the performance diagram for:
 Case-radiated sound power
 Inlet side sound power
 Outlet side sound power.
 The case-radiated noise as sound pressure at 4 m (free field conditions) is also specified in the type table and in the table below the performance curve.

Type	Ref. no.	Flow rate Free blowing	Rated speed	Sound press. case- radiation	Power consum.	Current consum.	Wiring diagram	Max. air flow temp.	Wgt net aprx.	Universal control system		Speed potentiometer		
										Type	Ref. no.	Type	Ref. no.	
Alternating current, 1~, 230 V, 50/60 Hz, EC motor, protection category IP44														
KRW EC 355/60/30	08171	2960	1620	46	0.37	1.61	979	60	20.8	EUR EC ²⁾ 01347	PU 10 ¹⁾	01734	PA 10 ¹⁾	01735
Three-phase current, 3~, 400 V, 50/60 Hz, EC motor, protection category IP44														
KRD EC 355/60/30	07590	4380	2500	56	1.30	2.01	1479	60	23.3	EUR EC ²⁾ 01347	PU 10 ¹⁾	01734	PA 10 ¹⁾	01735
Sound-insulated SKR EC – Alternating current, 1~, 230 V, 50/60 Hz, EC motor, protection category IP44														
SKRW EC 355/60/30 ³⁾	08176	3860	2210	43	0.90	3.92	979	60	40.0	EUR EC ²⁾ 01347	PU 10 ¹⁾	01734	PA 10 ¹⁾	01735
Sound-insulated SKR EC – Three-phase current, 3~, 400 V, 50/60 Hz, EC motor, protection category IP44														
SKRD EC 355/60/30	08296	4340	2510	46	1.26	1.96	1479	60	40.0	EUR EC ²⁾ 01347	PU 10 ¹⁾	01734	PA 10 ¹⁾	01735

¹⁾ Multiple EC fans can normally be connected. ²⁾ alternative electronic diff. pressure/ temperature controller (EDR/ETR, No. 01437/01438) or three level speed switch (SU/SA, No. 04266/04267), see Accessories. ³⁾ Performance diagram at www.HeliosSelect.de.

Performance curves KRW EC 355/60/30

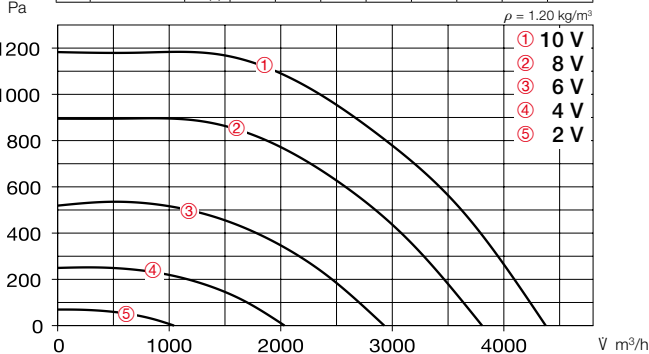
Frequency	Hz	Tot.	125	250	500	1k	2k	4k	8k	
L _{WA} Radiation		dB(A)	66	51	64	56	57	52	44	37
L _{WA} Inlet side		dB(A)	79	65	77	68	66	68	63	55
L _{WA} Outlet side		dB(A)	83	66	80	73	76	75	69	60



Free blowing						
Voltage V	n min ⁻¹	V m³/h	P W	I A	Lp dB(A)	SFP kW/m³/s
10	1660	2960	310	1.4	46	0.38
8	1410	2530	190	0.9	41	0.27
6	1070	1960	90	0.4	35	0.17
4	730	1290	40	0.2	25	0.11

Performance curves KRD EC 355/60/30

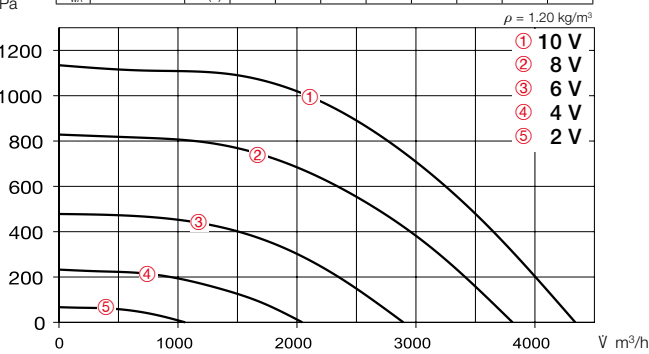
Frequency	Hz	Tot.	125	250	500	1k	2k	4k	8k	
L _{WA} Radiation		dB(A)	76	61	71	69	71	65	58	57
L _{WA} Inlet side		dB(A)	86	74	79	80	79	80	76	69
L _{WA} Outlet side		dB(A)	94	75	87	87	88	89	82	75



Free blowing						
Voltage V	n min ⁻¹	V m³/h	P W	I A	Lp dB(A)	SFP kW/m³/s
10	2500	4380	990	1.6	56	0.81
8	2180	3810	660	1.1	53	0.62
6	1670	2930	310	0.6	47	0.38
4	1150	2040	120	0.3	38	0.21

Performance curves SKRD EC 355/60/30

Frequency	Hz	Tot.	125	250	500	1k	2k	4k	8k	
L _{WA} Radiation		dB(A)	66	57	63	56	58	49	44	41
L _{WA} Inlet side		dB(A)	75	67	72	66	63	65	60	56
L _{WA} Outlet side		dB(A)	86	70	79	76	81	80	74	67



Free blowing						
Voltage V	n min ⁻¹	V m³/h	P W	I A	Lp dB(A)	SFP kW/m³/s
10	2500	4340	980	1.5	46	0.81
8	2175	3810	660	1.0	43	0.62
6	1660	2890	310	0.5	39	0.39
4	1145	2050	120	0.3	31	0.21

Accessories

External wall shutter

VK 60/30 Ref. no. 00877
 Automatic overpressure shutter made of light grey plastic.



Weather protection grille

WSG 60/30 Ref. no. 00112
 Stable construction made of extruded aluminium profiles, natural colour anodised.



Multi-leaf damper for rectangular duct installation

JVK 60/30 Ref. no. 06913
 Frame casing with double-sided flanges, positioning mechanism outside of air flow. Electrical drive see STM, Accessories.



Fitting

FSK 60/30 Ref. no. 00834
 For cost-effective integration of rectangular duct fans in round duct systems with Ø 315 mm.



Flexible connector

VS 60/30 Ref. no. 05697
 Flexible rectangular duct connector with double-sided flange frame.



Counter flange

GF 60/30 Ref. no. 06922
 Flange frame made of galvanised steel sheet for connection to the rectangular duct.



Rectangular duct silencer

KSD 60/30-35 Ref. no. 08730
 For outlet and inlet side insertion in the rectangular duct system.



Rectangular duct air filter

KLF 60/30-35 Coarse 70%* 08722
KLF 60/30-35 ePM2.5 65%* 08646
 With large bag filter. Galvanised steel sheet casing with double-sided flanges.



Electric heating element

EHR-K 15/60/30-35 No. 08706
EHR-K 30/60/30-35 No. 08707
 Closed tubular heating element in galvanised steel sheet casing with double-sided connection flanges.



Temperature control system for electric heating element

EHSD 16 Ref. no. 05003



Warm water heating element

WHR 2/60/30-35 No. 08786
WHR 4/60/30-35 No. 08787
 For installation in rectangular duct system.



Temperature control system for warm water heating element

WHS HE¹⁾ Ref. no. 08319

¹⁾ With heat output reduced to 2200 l/h for Type WHR 4/60/30-35.



* See product page 477 for detailed description.