

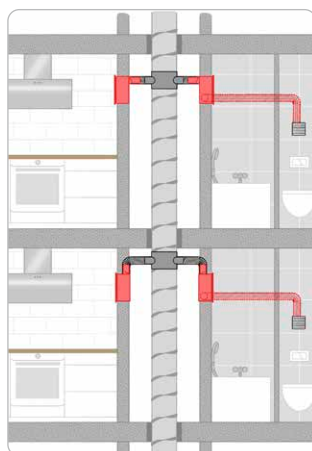
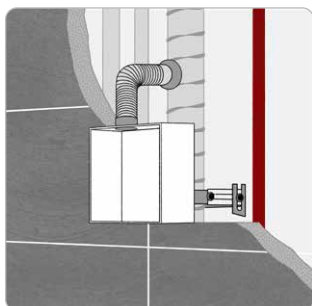


The perfect housing solution for all requirements.

Adapted to the installation location and fire protection requirements, the perfect housing solution is always at the ready. Determine the applicable installation situation using the illustrations and select the corresponding housing in the quick overview. All relevant housing details can be found on the following pages.

A INSIDE F90 SHAFT

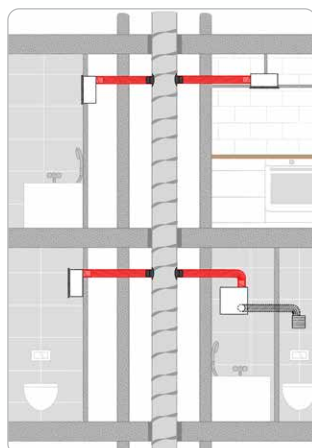
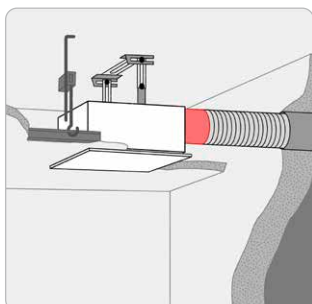
Steel flex or steel pipe only to secondary room connection.



Installation, outlet	Type	Ref. no.
Single room ventilation of bathroom, WC or open-plan kitchens		
Flush-mounted, lateral outlet	ELS-GUB	08112
Flush-mounted, rear outlet	ELS-GUBR	08113
Surface-mounted, rear outlet	–	–
Surface-mounted, lateral outlet	–	–
Two room ventilation of bathroom and WC		
Flush-mounted, lateral outlet	ELS-GUBZL left	08115
	ELS-GUBZR right	08117
Flush-mounted, rear outlet	ELS-GUBRZL left	08116
	ELS-GUBRZR right	08118

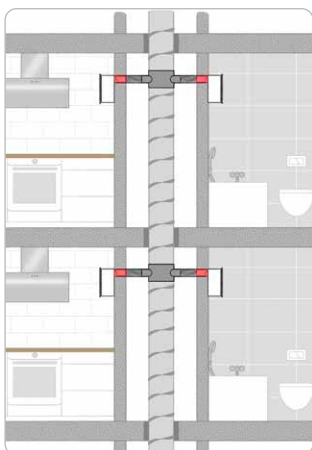
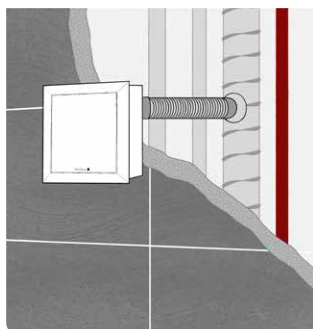
B OUTSIDE F90 SHAFT

Steel flex or steel pipe to riser pipe.



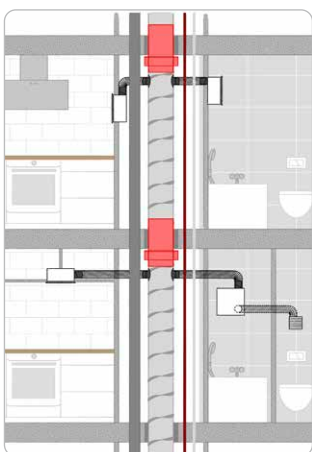
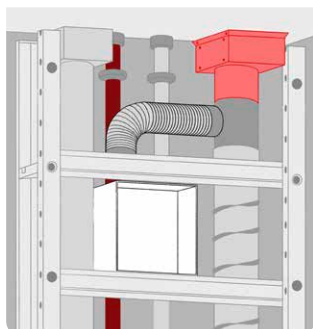
Installation, outlet	Type	Ref. no.
Single room ventilation of bathroom, WC or open-plan kitchens		
Flush-mounted, lateral outlet	ELS-GUBA	08114
Flush-mounted, rear outlet	ELS-GUBA	08114
	+ accessory ELS-ARS	08185
Surface-mounted, rear outlet	ELS-GAPB	08128
Surface-mounted, lateral outlet	ELS-GUBA	08114
	+ accessory ELS-APASA	07328
Two room ventilation of bathroom and WC		
Flush-mounted, lateral outlet	ELS-GUBA	08114
	ELS-ZS	08186
Flush-mounted, rear outlet	ELS-GUBA	08114
	+ accessory ELS-ARS	08185
	+ accessory ELS-ZS	08186

C ON F90 SHAFT



Installation, outlet	Type	Ref. no.
Single room ventilation of bathroom, WC or open-plan kitchens		
Flush-mounted, lateral outlet	—	—
Flush-mounted, rear outlet	—	—
Surface-mounted, rear outlet	ELS-GAPB	08128
Surface-mounted, lateral outlet	—	—
Two room ventilation of bathroom and WC		
Flush-mounted, lateral outlet	—	—
Flush-mounted, rear outlet	—	—

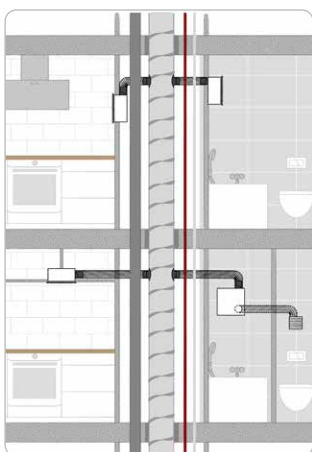
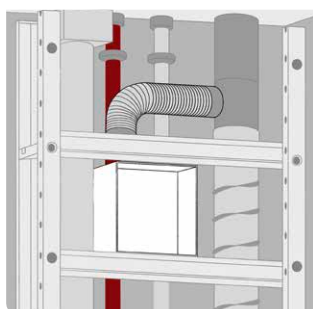
D WITH CEILING BARRIER



Installation, outlet	Type	Ref. no.
Single room ventilation of bathroom, WC or open-plan kitchens		
Flush-mounted, lateral outlet	ELS-GU	08111
Flush-mounted, rear outlet	ELS-GU + accessory ELS-ARS	08111 08185
Surface-mounted, rear outlet	ELS-GAP	08127
Surface-mounted, lateral outlet	ELS-GU + accessory ELS-APASA	08111 07328
Two room ventilation of bathroom and WC		
Flush-mounted, lateral outlet	ELS-GU + accessory ELS-ZS	08111 08186
Flush-mounted, rear outlet	ELS-GU + accessory ELS-ARS + accessory ELS-ZS	08111 08185 08186

E WITHOUT FIRE PROTECTION

For up to 2 full floors.



Installation, outlet	Type	Ref. no.
Single room ventilation of bathroom, WC or open-plan kitchens		
Flush-mounted, lateral outlet	ELS-GU	08111
Flush-mounted, rear outlet	ELS-GU + accessory ELS-ARS	08111 08185
Surface-mounted, rear outlet	ELS-GAP	08127
Surface-mounted, lateral outlet	ELS-GU + accessory ELS-APASA	08111 07328
Two room ventilation of bathroom and WC		
Flush-mounted, lateral outlet	ELS-GU + accessory ELS-ZS	08111 08186
Flush-mounted, rear outlet	ELS-GU + accessory ELS-ARS + accessory ELS-ZS	08111 08185 08186

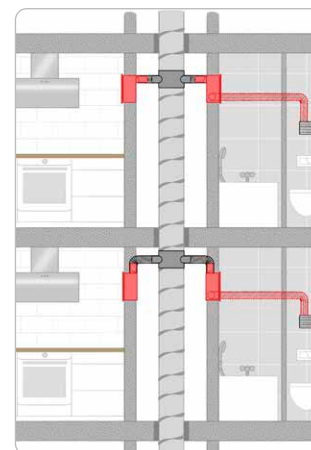
Information on fire protection in multi-storey buildings

With regard to the planning and execution of ventilation systems, the State fire protection requirements must be complied with. Buildings with more than two full floors are normally subject to such requirements. In order to prevent the transmission of fire to other fire sections, the illustrated solutions are available according to the structural conditions for the installation of mono tube ventilation systems.

A Flush-mounted installations in wall, ceiling and fire-resistant shaft (F90) or L90 ventilation ducts.

Connection of up to 3 housings per floor possible on more than 20 full floors. The second room connection must be carried out with steel flex pipe connection.

- Flush-mounted housing with fire protection encasement K90
- Metal outlet connections with automatic non-return valve and shut-off upon triggering of fusible link
- Removable plug connector for electrical connection
- Replaceable hinged plaster cover
- Connection DN 80 mm
- General technical approval, Z-51.1-193



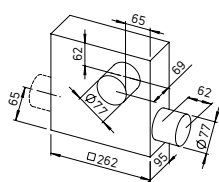
■ Single room ventilation of bathroom, WC or open-plan kitchens

			Type	ELS-GUB
			Ref. no.	08112
			Installation	Flush-mounted
			Outlet	lateral, to top, can be turned to left or right
			Type	ELS-GUBR
			Ref. no.	08113
			Installation	Flush-mounted
			Outlet	rear, freely rotatable by 90°

■ Two room ventilation of bathroom and WC

			Type	ELS-GUBZL
			Ref. no.	08115
			Installation	Flush-mounted
			Outlet	lateral, to top, can be turned to left or right
			Two room connection	left
			Type	ELS-GUBZR
			Ref. no.	08117
			Installation	Flush-mounted
			Outlet	lateral, to top, can be turned to left or right
			Two room connection	right
			Type	ELS-GUBRZL
			Ref. no.	08116
			Installation	Flush-mounted
			Outlet	rear, freely rotatable by 90°
			Two room connection	left

Two room ventilation of bathroom and WC

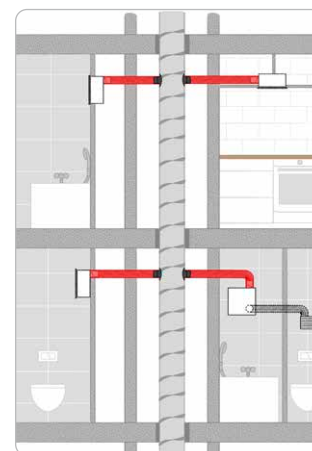


Type	ELS-GUBRZR
Ref. no.	08118
Installation	Flush-mounted
Outlet	rear, freely rotatable by 90°
Two room connection	right

B Flush or surface-mounted installations in wall or ceiling outside of fire-resistant shafts (F90) or L90 ventilation ducts.

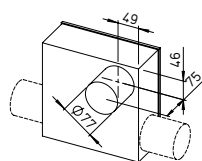
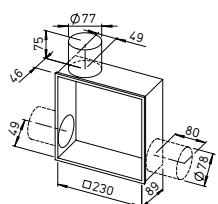
Connection of up to 3 housings per floor possible on more than 20 floors. Steel flex pipe connection to riser pipe.

- Plastic housing with fire protection element K90
- Metal outlet connections with automatic non-return valve and shut-off upon triggering of fusible link
- Made of plastic (white), in fire class B 2
- Replaceable hinged plaster cover
- Connection DN 80 mm
- General technical approval, Z-51.1-193

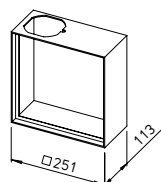


Single room ventilation of bathroom, WC or open-plan kitchens

Also for second room ventilation of bathroom and WC using accessory set*

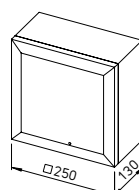
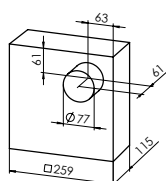


Type	ELS-GUBA
Ref. no.	08114
Installation	Flush-mounted
Outlet	lateral, to top, can be turned to left or right
Outlet optional	rear, freely rotatable by 90° ELS-ARS, ref. no. 08185
*Two room ventilation optional left or right	using ELS-ZS, Ref. no. 08186



Type	ELS-APASA (+ ELS-GUBA)**
Ref. no.	07328
Installation	Surface-mounted
Outlet	lateral, to top, can be turned to left or right

**ELS-GUBA (Ref. no. 08114) is not included in the scope of delivery.



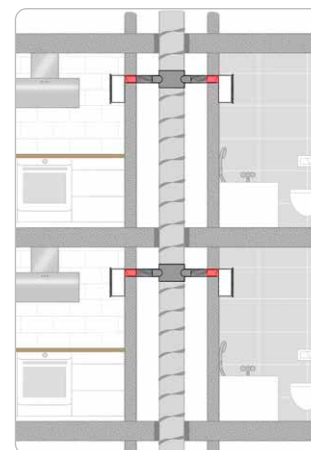
ELS surface-mounted unit

Type	ELS-GAPB
Ref. no.	08128
Installation	Surface-mounted
Outlet	rear, freely rotatable by 90°

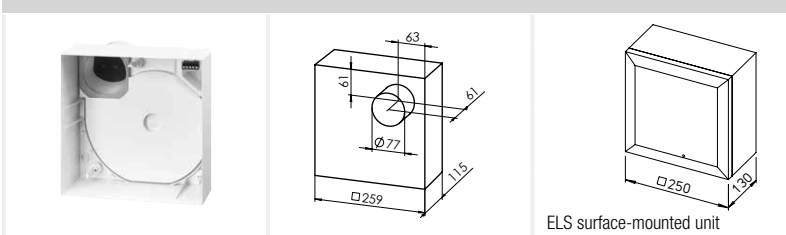
C Surface-mounted installation in wall or ceiling on walls of fire-resistant shafts (F90) or ventilation ducts (L90).

Connection of up to 3 housings per floor possible on more than 20 floors.

- Surface mounting housing with fire protection element K90
- Metal outlet connections with automatic non-return valve and shut-off upon triggering of fusible link
- Plug connector for electrical connection
- Made of plastic (white), in fire class B 2
- Connection Ø air outlet DN 80 mm
- General technical approval, Z-51.1-193



■ Single room ventilation of bathroom, WC or open-plan kitchens

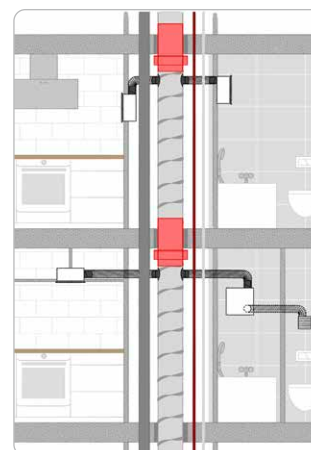


Type	ELS-GAPB
Ref. no.	08128
Installation	Surface-mounted
Outlet	rear, freely rotatable by 90°

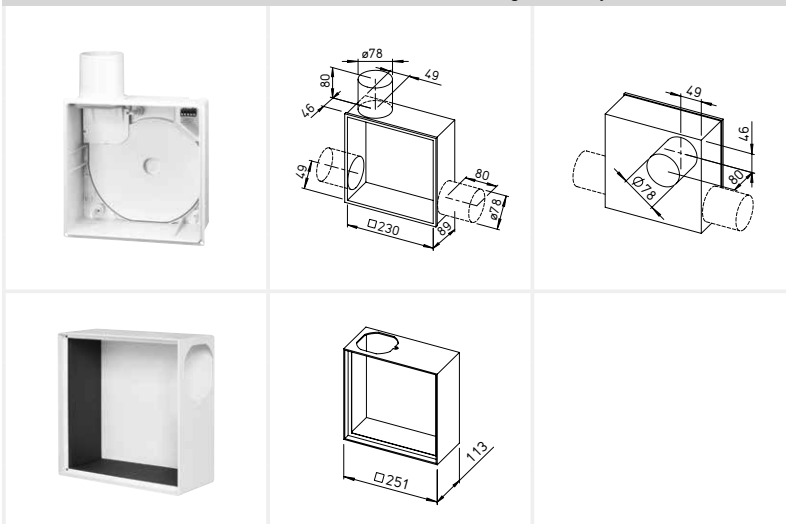
D Flush or surface-mounted installation in wall, ceiling or in installation shaft with fire protection solution ELS-D ceiling barrier.

Connection of up to 3 housings per floor possible. For more than 20 floors when using fire protection ceiling barrier in the riser pipe.

- Applicable housings: Universal housing without fire protection ELS-GU for flush-mounting or ELS-GAP or ELS-APASA in connection with ELS-GU for surface-mounting
- Housing without fire protection, with airtight non-return valve
- Removable plug connector for electrical connection
- Made of plastic (white), in fire class B 2
- Connection DN 80 mm
- General technical approval, Z-51.1-193


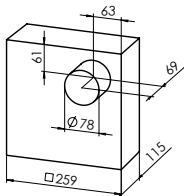
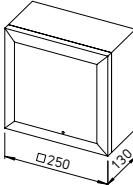


■ Flush or surface-mounted installation. Single room ventilation of bathroom, WC or open-plan kitchens
Also for second room ventilation of bathroom and WC using accessory set*



Type	ELS-GU
Ref. no.	08111
Installation	Flush-mounted
Outlet	lateral, to top, can be turned to left or right
Outlet optional	rear, freely rotatable by 90° ELS-ARS, ref. no. 08185
*Two room ventilation optional left or right	using ELS-ZS, Ref. no. 08186
Type	ELS-APASA (+ ELS-GU)**
Ref. no.	07328
Installation	Surface-mounted
Outlet	lateral, to top, can be turned to left or right
**ELS-GU (Ref. no. 08111) is not included in the scope of delivery.	

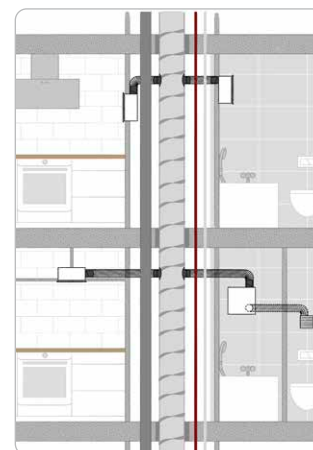
■ **Surface-mounting. Single room ventilation of bathroom, WC or open-plan kitchens**

			Type	ELS-GAP
			Ref. no.	08127
			Installation	Surface-mounted
			Outlet	rear, freely rotatable by 90°
ELS surface-mounted unit				

E Flush or surface-mounted installations in wall, ceiling or in installation shaft without fire protection.


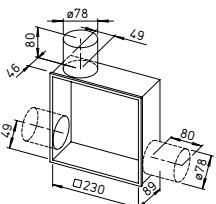
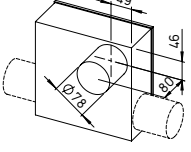
Connection of up to 3 housings per floor possible. For connection to shared riser pipe of up to two full floors.

- Applicable housings: Universal housing without fire protection ELS-GU for flush-mounting or ELS-GAP or ELS-APASA in connection with ELS-GU for surface-mounting
- Housing without fire protection, with airtight non-return valve
- Removable plug connector for electrical connection
- Made of plastic (white), in fire class B 2
- Connection DN 80 mm
- General technical approval, Z-51.1-193


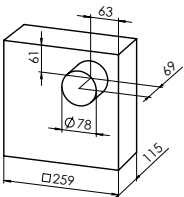
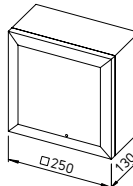

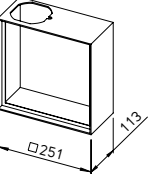


■ **Flush-mounting. Single room ventilation of bathroom, WC or open-plan kitchens**

Also for second room ventilation of bathroom and WC using accessory set*

			Type	ELS-GU
			Ref. no.	08111
			Installation	Flush-mounted
			Outlet	lateral, to top, can be turned to left or right
			Outlet optional	rear, freely rotatable by 90° ELS-ARS, ref. no. 08185
			*Two room ventilation optional left or right	using ELS-ZS, Ref. no. 08186

■ **Surface-mounting. Single room ventilation of bathroom, WC or open-plan kitchens**

			Type	ELS-GAP
ELS surface-mounted unit			Ref. no.	08127
			Installation	Surface-mounted
			Outlet	rear, freely rotatable by 90°
			Type	ELS-APASA (+ ELS-GU)**
			Ref. no.	07328
			Installation	Surface-mounted
			Outlet	lateral, to top, can be turned to left or right
			**ELS-GU (Ref. no. 08111) is not included in the scope of delivery.	