

DV EC 250



Extremely weather-resistant EC roof fan in plastic design for an extensive range of applications, diagonal outlet.

Common features

DV EC Pro and DV EC Eco

■ Casing

Aerodynamically designed plastic casing made of grey polypropylene with diagonal air outlet direction. Air flow temperatures from -30 to +60 °C.

■ Impeller

Diagonal impeller made of aluminium, the motor impeller unit is dynamically balanced for low-noise operation.

■ Drive

Energy-efficient EC external rotor motor in protection category IP54. Optimised efficiency even with speed control for low operating costs. Continuously variable speed control. Maintenance-free and radio interference-free, ball bearing mounted.

■ Motor protection

Integrated electronic temperature monitoring system for EC motor and electronics.

■ Electrical connection

Standard operating switch (protection category IP65) mounted on the outside of the casing. Connection voltage 1~, 230 V, 50 Hz.

■ Installation

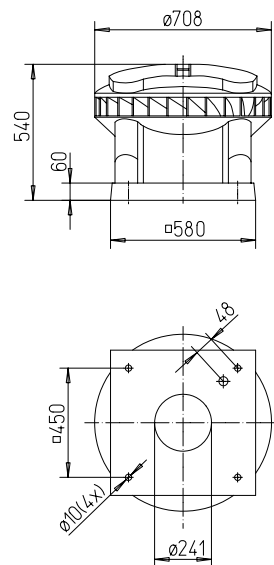
Horizontal alignment on the roof. In case of sloping roofs, a corresponding base formation must be used to prevent water ingress. A range of accessories facilitates the installation of the fan in the building duct system.

■ Noise

The total level and range are specified above the performance diagram for:

- ☐ Inlet side sound power
 - ☐ Outlet side sound power.
- The case-radiated noise as sound pressure at 4 m (free field conditions) is also specified in the type table and the table below the performance curve.

Dimensions DV EC 250



Dim. in mm

PRO

Description DV EC Pro

■ Power control

- ☐ Ideal as a central exhaust air fan for multi-floor residential construction in accordance with DIN 18017-3.
- ☐ When combined with other components (accessories), a complete central ventilation system in accordance with DIN 18017-3 can be created with demand-driven ventilation.
- ☐ Integrated time control for weekly or daily programme.
- ☐ Integrated pressure sensor from 0 - 300 Pa for constant pressure maintenance in combined operation with other extract air fans, e.g. Helios ELS.
- ☐ Short amortisation period due to high energy saving.
- ☐ Operating modes of the DV EC Pro can be easily set on site via a local web server.
- ☐ Integrated Ethernet interface (Modbus TCP) for connection to a building management system or for direct connection to the interface via PC/laptop (no accessories).

ECO

Description DV EC Eco

■ Power control

- ☐ Continuously variable speed control with speed potentiometer PU/PA 10 (accessories, see type table).
- ☐ When combined with the universal control system EUR EC or electronic pressure/temperature controllers EDR/ETR (accessories, see type table), the fan can be used for the continuously variable control of differential pressure, differential temperature or flow velocity. Performance levels are shown in the performance curve as an example.

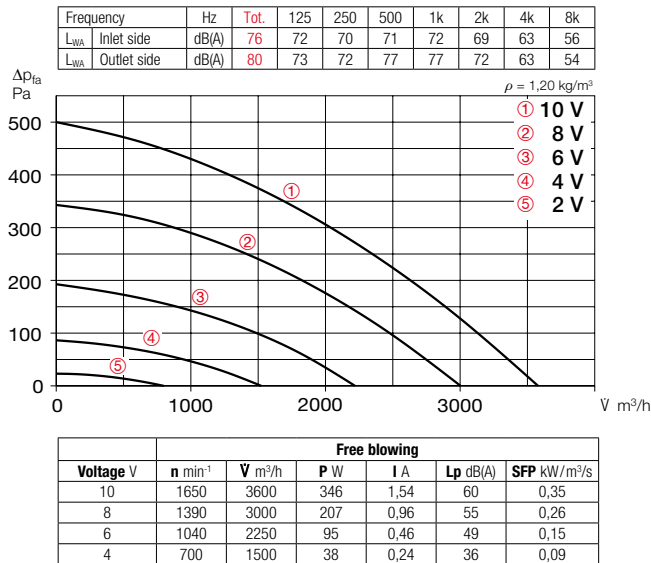
Type	Ref. no.	Maximum speed approx.	Flow rate Free blowing	Noise sound press.	Power consumption at maximum speed		Wiring diagram	Max. air flow-temp.	Wgt net aprx.	Universal control system		Speed potentiometer			
												Flush-mounted	Surf.-mounted		
		min ⁻¹	m ³ /h	dB(A) in 4 m	kW	A	No.	+ °C	kg	Type	Ref. no.	Type	Ref. no.	Type	Ref. no.
PRO Type DV EC Pro, Single-phase alternating current, 230 V, 50/60 Hz, EC motor, IP54															
DV EC 250 Pro	08386	1640	3580	60	0.39	1.7	1529	60	30.0	—	—	—	—	—	—
ECO Type DV EC Eco, Single-phase alternating current, 230 V, 50/60 Hz, EC motor, IP54															
DV EC 250 Eco	08322	1640	3580	60	0.39	1.7	1530	60	30.0	EUR EC ¹⁾²⁾	01347	PU 10 ³⁾	01734	PA 10 ³⁾	01735

¹⁾ Multiple EC fans can normally be connected.

²⁾ Alternative elec. pressure/temp. controller (EDR/ETR, no. 01437/01438) in combination with mains adapter NG 24, no. 01439, see accessories.

³⁾ W/o LED supply.

Performance curves DV EC 250



Accessories for all types

Base silencer

SSD 250 Ref. no. 05292
With hinge mechanism for easy inspection and cleaning.

Flange connection plate

FAP 250 Ref. no. 08383
Made of galvanised steel sheet. Allows the connection of the duct system and accessories to the roof fans DV EC if no base silencer SSD is used.

Flat roof base

FDS 250 Ref. no. 01379
With hinge mechanism for easy inspection and cleaning.

Counter flange

FR 250 Ref. no. 01203
Made of galvanised steel sheet, for inlet-side duct connection.

Flanged flexible connector

STS 250 Ref. no. 01220
For the prevention of structure-borne noise transmission to inlet-side ducts. Flanges made of galvanised steel sheet.

Duct shutter

RVS 250 Ref. no. 02592
Automatic, made of galvanised steel sheet, shutters made of aluminium. Prevents cold draughts when the fan is at a standstill. For vertical throughflow from bottom to top.

Five-step speed switch

SA-5 10 Ref. no. 40229
Five-step switch for surface mounting. For five-step control of EC fans or frequency inverters. Steps from 2 to 10 V can be set via off-set. Protection class IP54.

Accessories for DV EC Eco

Universal control system

EUR EC Ref. no. 01347
For the continuously variable control or regulation of single and three-phase EC fans with a setpoint of 0–10 V DC.

Speed potentiometer

PU/PA 10 See type table
For the direct control/setpoint setting of EC fans with a potentiometer input.

Accessory details Page

Roof install. accessories	562 f.
Ventilation grilles	564 ff.
Exhaust air elements	578 ff.
Intake air elements	590 ff.
Fire protection systems	594 ff.
Universal control systems, electronic controllers, speed potentiometer	617 ff.

