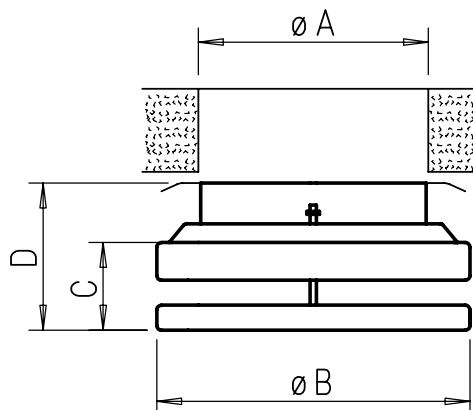


## MTVZ



## Dimensions MTVZ



Dim. in mm see table

### ■ Application

For supply air operation in rooms of any kind and especially where ventilation components made of non-combustible material are stipulated. Can be used for low to high flow velocities. Low-noise.

### ■ Advantages

- ☐ High-quality metal design in aerodynamic form with low noise levels.
- ☐ Elegant valve disc concealing the opening for continuously variable adjustment.
- ☐ Installation in ceilings and walls within seconds and without tools.
- ☐ Plaster and difference compensation in case of unevenness, diameter differences or ducts that have been mounted too deep.
- ☐ Clamp spring holder allows direct insertion in ducts or walls with thickness of approx. 20 mm or more without additional mounting ring.

### ■ Design

Metal design with high-quality finish in white. Protected against corrosion with epoxy powder coating. Airtight closure of the opening circumferential foam

ring to prevent air leakage from the side. Contamination of the surrounding environment is thereby prevented.

### ■ Delivery

Each valve in separate polybag.

### ■ Accessories

Mounting rings (see table) are required for installation in sheet metal duct walls and thin panels.

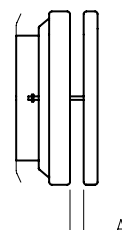
### ■ Installation

Set to desired volume flow pursuant to adjacent diagram. Distance "A" is specified in mm from the origin. Valve insertion in duct or wall opening. A straight duct section of at least 300 mm is required for uniform throughflow.

### ■ Performance data

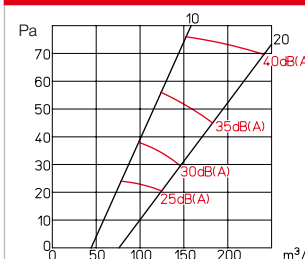
The diagrams provide an overview of the air volumes, resistances and noise levels at corresponding settings for distance "A" in mm.

### Volume adjustment

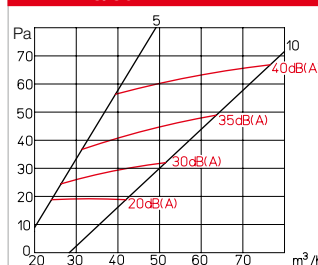


Distance A = mm

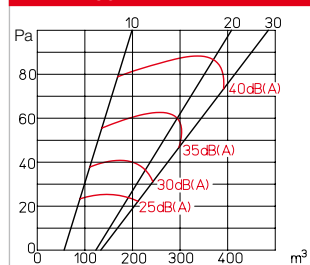
### MTVZ 125



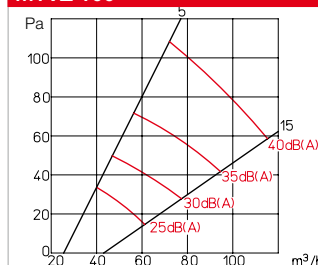
### MTVZ 75/80



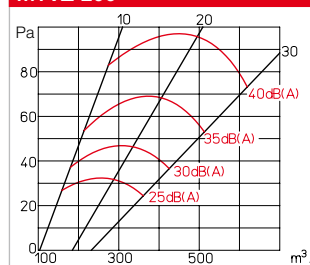
### MTVZ 160



### MTVZ 100



### MTVZ 200



### Order data

Type	MTVZ 75/80	MTVZ 100	MTVZ 125	MTVZ 160	MTVZ 200
Ref. no.	09603	09604	09605	09606	09607
Ø A mm	73 – 85	95 – 105	120 – 130	150 – 165	195 – 210
Ø B mm	108	135	160	195	230
C mm	26 – 46	26 – 46	26 – 46	26 – 56	26 – 56
D mm	68	65	65	68	65
Weight in g	190	240	405	390	480

### Mounting ring

Type	EBR 75/80	EBR 100	EBR 125	EBR 160	EBR 200
Ref. no.	00952	00953	00954	00955	00956
for NW (mm)	75/80	100	125	150/160	200