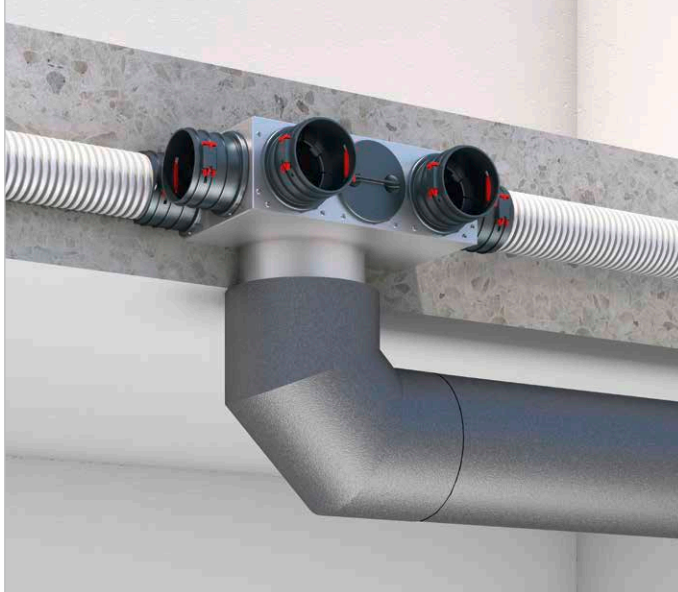


flexpipe®plus ceiling-integrated distribution element

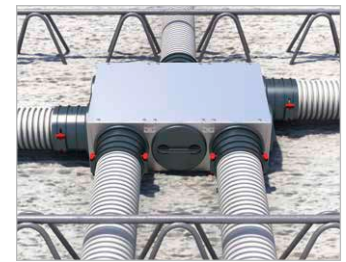


With the ceiling-integrated distribution element, we are making it even easier for you to realise the perfect KWL ventilation system quickly and easily in the future. The distribution element is not only flexible in application due to its compact dimensions, but it also saves you the complicated duct insertion and removal from the concrete ceiling

Highlights:

- Intelligent, almost invisible solution for air distribution of flexpipe®plus ducts in concrete ceilings for single-family houses and apartment buildings.
- Integrated height adjustment for different ceiling types.
- Installation without formwork damage and tool-free duct connection using a click system save time and money.

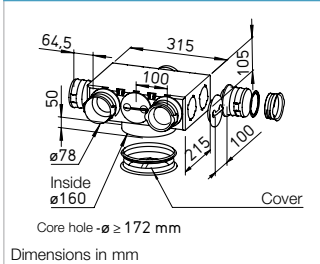
Installation in filigree ceiling:



Installation in raw concrete ceiling:



Distribution element 5x

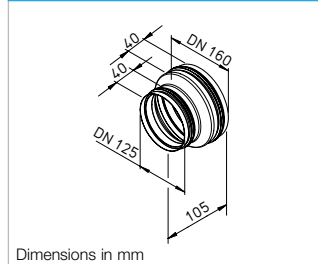


flexpipe distribution element 5x

Type	Ref. no.	Ø NW mm
FRS-VE 5-75/160	40161	160

For universal installation in the unfinished concrete flooring. Duct connection DN 160 or DN 125 possible (duct connector RVBD 160 L or RVBD 160/125 required for this). 10 connection options for up to 5 FRS-R 75 ventilation ducts. Large inspection opening for easy cleaning incl. cover.

Fitting for duct connection

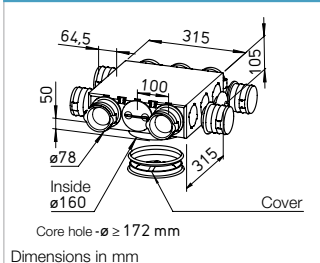


Duct connector

Type	Ref. no.
RVBD 160/125	40165

Duct connector for the connection of ventilation ducts/IsoPipe ducts DN 125.

Distribution element 9x

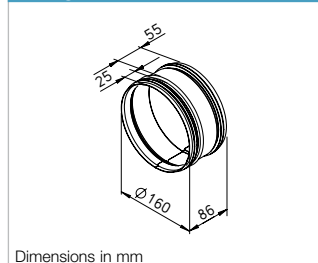


flexpipe distribution element 9x

Type	Ref. no.	Ø NW mm
FRS-VE 9-75/160	40162	160

For universal installation in the unfinished concrete flooring. Duct connection DN 160 or DN 125 possible (duct connector RVBD 160 L or RVBD 160/125 required for this). 12 connection options for up to 9 FRS-R 75 ventilation ducts. Large inspection opening for easy cleaning incl. cover.

Fitting for duct connection



Duct connector long

Type	Ref. no.
RVBD 160 L	40164

Duct connector for the connection of ventilation ducts/IsoPipe ducts DN 160.

flexpipe®plus Silencer box

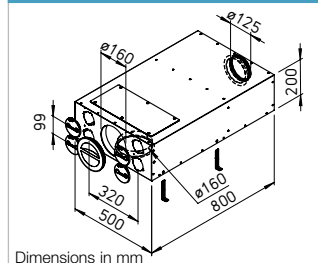


The ideal companion for the FRS-VE ceiling-integrated distribution element: The innovative FRS silencer box.

Highlights:

- Direct mounting on the ceiling-integrated distribution element for minimal space requirements, e.g. directly under the ceiling.
- Optimal sound insulation properties. In combination with FRS-VE, values of up to 30 dB are achieved.
- Very good accessibility for easy cleaning thanks to extra-large inspection opening.
- Simple and flexible installation vertically on the wall or horizontally on the ceiling.

Silencer box



flexpipe silencer box

Type	Ref. no.	Ø NW mm
FRS-SDB 75/160	40163	75

Silencer and distribution box for combination with the FRS-VE. RVBD 160 L required for connection. Horizontal and vertical installation possible. 4 optional connections 75 mm at the front. Optional accessories: Single connector ref. no. 03852. Including: Mounting bracket, 75 mm cover and 160 mm cover.

Insertion losses

Type	Ref. no.	Insertion loss D <sub>2</sub> dB at Hz						Average insertion loss
		125	250	500	1000	2000	4000	
FRS-SDB 75/160	40163	16	23	23	17	21	18	23