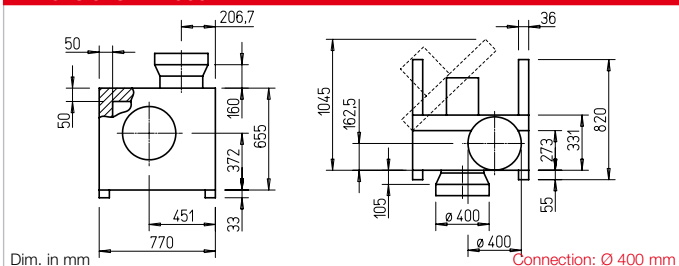


MB 355



Dimensions MB 355



Casing

See page 322.

Impeller

Backward curved high performance centrifugal impeller made of aluminium, mounted directly on motor shaft. High efficiency, low noise, aerodynamically optimised volute casing. Dynamically balanced in accordance with DIN ISO 21940-11 – quality grade 6.3.

Drive

Through maintenance-free, speed-controllable IEC flange motor in protection category IP55. Ball bearing mounted, radio interference-free.

Electrical connection

Standard terminal box (IP55) mounted to external cable, on outside of motor for type MBD 355/2/2.

Motor protection

With external thermal contacts on the terminal block, which must be wired to the motor protection circuit breaker.

Power control

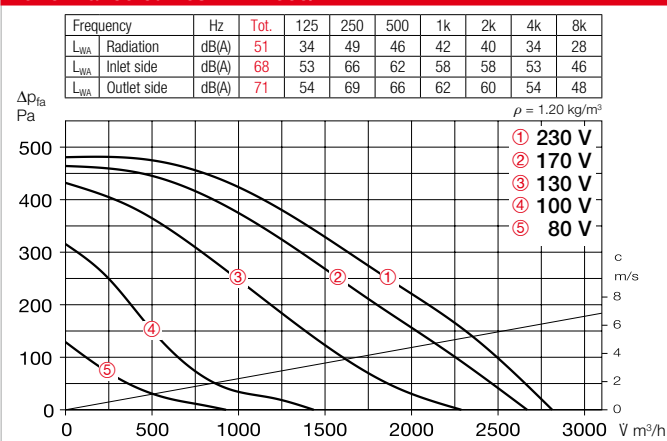
All types are speed-controllable using voltage reduction by means of transformer (accessories). The 3~ types can also be operated at two speeds using a Y/Δ switch or motor protection circuit breaker M 4. Performance levels are shown in the performance diagram.

Accessories

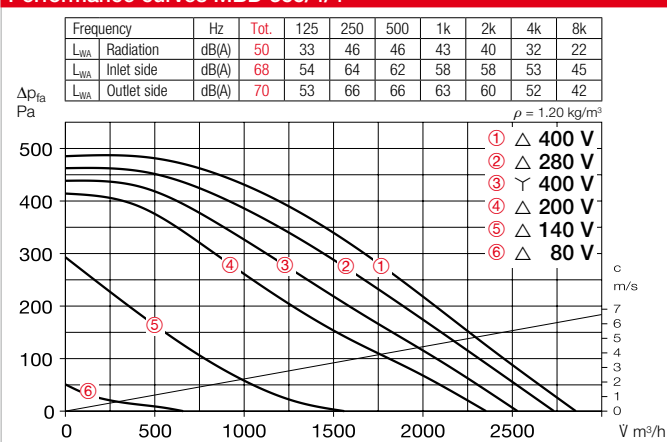
Wall bracket made of galv. steel sheet.
MB-WK 355 Ref. no. 05528

Weather protection cover (galv. steel sheet), mounted above motor.
MB-WSD Ref. no. 01856

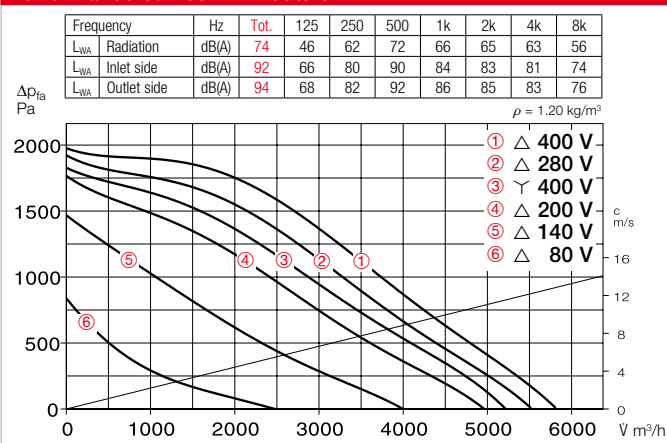
Performance curves MBW 355/4



Performance curves MBD 355/4/4



Performance curves MBD 355/2/2



Flexible connecting sleeve for installation between fan and duct.
FM 400 (+70 °C) No. 01676
FM 400 T120(+120 °C) No. 01659

Speed switch and on/off switch for two-speed Y/Δ switchable three-phase current fans.
DS 2³⁾ Ref. no. 01351

Type	Ref. no.	Flow rate free blowing	Rated speed	Case-rad. sound pressure	Power consumption	Current consumption		Wiring diagram	Max. air flow temperature		Weight net appr.	Transformer speed controller 5-step					
						at rated voltage	in contr. mode		Rat. vol..	Control		with motor prot. circuit breaker		w/o motor prot. circuit breaker		Mot. prot. circ. break. for connecting built-in thermal contacts	
		V m ³ /h	min ⁻¹	dB(A) at 1m	kW	A	A	No.	+ °C	+ °C	kg	Type	Ref. no.	Type	Ref. no.	Type	Ref. no.
Alternating current, 230 V, 50 Hz, Capacitor motor, protection category IP55																	
MBW 355/4	05951	2810	1410	43	0.30	1.40	1.90	1119	100	60	81.0	MWS 3	01948	TSW 3.0	01496	MW ¹⁾	01579
Two-speed, three-phase current motor, 400 V, 50 Hz, Y/Δ connection, protection category IP55																	
MBD 355/4/4	05947	2530/2850	1240/1430	40/42	0.26/0.30	0.45/0.63	0.84	520	100	60	81.0	RDS 2	01315	TSD 1.5 ³⁾	01501	M 4 ²⁾	01571
MBD 355/2/2	05948	5210/5800	2510/2840	65/68	1.65/2.20	2.9/5.0	5.50	520	100	60	100.0	RDS 7	01578	TSD 7.0 ³⁾	01504	M 4 ²⁾	01571

¹⁾ Incl. operating switch. ²⁾ Incl. operating and speed switch. ³⁾ Req. motor protection circuit breaker: Type MD, No. 05849.