

**RR 125**



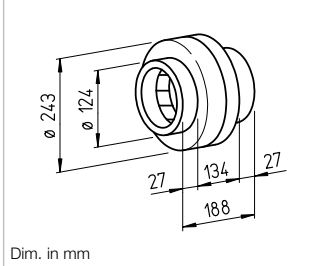
**RRK 125**



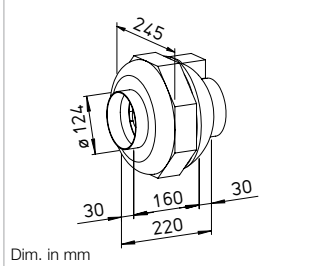
**SVR 125**



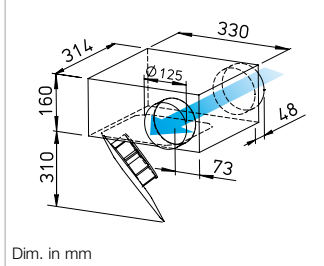
**Dimensions RR 125**



**Dimensions RRK 125**



**Dimensions SVR 125**



**For the delivery of medium and small air volumes against high resistances.**

Specifically designed for direct insertion in duct systems. High pressure performance for overcoming friction losses, deflection losses and aggregate resistances. For various applications in commercial, industrial and residential areas.

**Special features**

- Low space requirement and minimal installation costs due to linear throughflow.
- No need for elaborate deflectors.
- Connectors on inlet and outlet side correspond to standard duct Ø.
- Performance adjustment through 100% speed control.
- Can be used in any position.
- Wide range of accessories.
- Aerodynamically optimised casing design.

**Common features**

**Motor**

Enclosed, ball bearing mounted external rotor motor with humidity protection, insulation class F, for continuous operation, maintenance-free and radio interference-free.

**Motor protection**

Through built-in thermal contacts wired in series to the winding, automatic deactivation and reactivation after cooling.

**Installation**

No restrictions in any position (horizontal, vertical, diagonal) through corresponding installation for supply or extract ventilation (exception: SVR must not be installed with the retractable motor-impeller unit upward). Installation in duct system, preferably away from the room to be ventilated for less noise.

**Description RR**

**Casing**

Made of galvanised steel sheet, robust for harsh operating conditions. Inlet and outlet side connection dimensions correspond to standard duct Ø.

**Power control**

From 0 – 100 % possible using electronic controller or step transformer (see table) or two level operation with type DS 2/2 (accessories).

**DS 2/2** Ref. no. 01267

**Electrical connection**

Terminal box (IP54) on outside of casing.

**Impeller**

Centrifugal, with backward curved blades made of plastic. Directly pressed on motor and dynamically balanced as a unit. Low-noise, high level of efficiency.

**Protection category**

Protection category IP44 through inlet and outlet-side installation in a duct system which prevents the ingress of rainwater.

**Description RRK**

**Casing**

All components made of corrosion-resistant and impact-resistant plastic. Six built-in guide blades additionally increase the level of efficiency. Colour: Silver-grey.

**Power control**

From 0 – 100 % possible using electronic controller or step transformer (see table).

**Electrical connection**

Terminal box (IP44) on outside of casing.

**Impeller**

Centrifugal, with backward curved blades made of plastic. Directly pressed on motor and dynamically balanced as a unit. Low-noise, high level of efficiency.

**Protection category**

IP44

**Description SVR**

**Casing**

Flat casing in compact design made of galvanised steel sheet. Connectors and lip seal on inlet and outlet side for standard duct Ø. The retractable motor-impeller unit allows inspection and cleaning without dismantling components. The swivelling range must be considered for the inspection opening.

**Power control**

From 0 – 100 % possible using electronic controller or step transformer (see table) or two level operation with type DS 2/2 (accessories).

**DS 2/2** Ref. no. 01267

**Electrical connection**

Terminal box (IP54) mounted to external cable.

**Impeller**

Energy-saving centrifugal impeller with backward curved blades made of high-quality plastic. Dynamically balanced for low-noise operation.

**Protection category**

IP44 with connected duct system.

**Noise**

The total level and range are specified above the performance diagram for

- Case-radiated sound power
- Inlet/outlet side sound power in dB(A).
- The case-radiated noise and inlet/outlet side air noise as sound pressure at 1 m (free field conditions) are also specified in the type table.

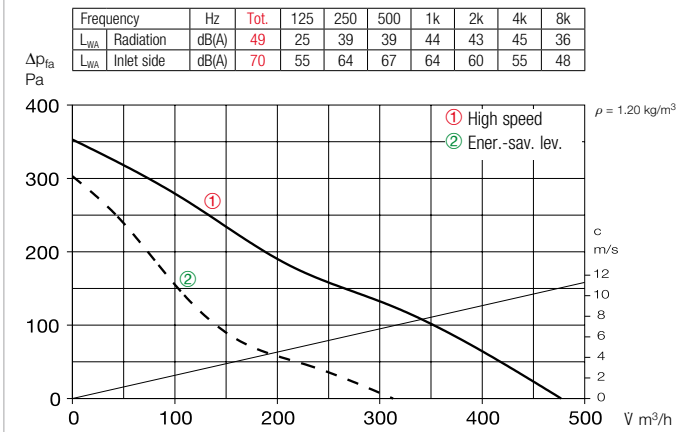
Type	Ref. no.	Flow rate	Rated speed	Sound press. case radiation	Power consum.	Power consump.		Wiring diagram	Max air flow temp.		Wgt net aprx.	Transformer speed controller 5-step	Electronic <sup>3)</sup> Speed controller, cont. var. flush-mount. / surf-mount.		
		Free blowing				at rated voltage	with control		at rated voltage	with control			Type	Ref. no.	Type
		V m³/h	min⁻¹	dB(A) in 1 m	W	A	A	No.	+ °C	+ °C	kg	Type	Ref. no.	Type	Ref. no.
<b>Type RR, Single-phase alternating current, 230 V, 50 Hz, Capacitor motor, IP44</b>															
<b>RR 125 C<sup>1)</sup></b>	05655	480 <sup>1)</sup> /310	2480 <sup>1)</sup> /1655	42	62 <sup>1)</sup> /40	0.27 <sup>1)</sup> /0.18	0.27	934.1	70	70	2.9	<b>TSW 0.3</b>	03608	<b>ESU 1 / ESA 1</b>	00236 / 00238
<b>Type RRK, Single-phase alternating current, 230 V, 50 Hz, Capacitor motor, IP44</b>															
<b>RRK 125</b>	05974	390	2635	36	42	0.19	0.19	508	70	60	2.5	<b>TSW 0.3</b>	03608	<b>ESU 1 / ESA 1</b>	00236 / 00238
<b>Type SVR, Single-phase alternating current, 230 V, 50 Hz, Capacitor motor, IP33</b>															
<b>SVR 125 B<sup>2)</sup></b>	02671	400/290 <sup>2)</sup>	2570/1810 <sup>2)</sup>	46/38 <sup>2)</sup>	59/41 <sup>2)</sup>	0.26/0.18 <sup>2)</sup>	0.24	934.1	60	60	5.1	<b>TSW 1.5</b>	01495	<b>ESU 1 / ESA 1</b>	00236 / 00238

<sup>1)</sup> Type with high speed; with additional energy-saving level as standard (see performance diagram). <sup>2)</sup> Values refer to the two performance levels (see performance diagram).

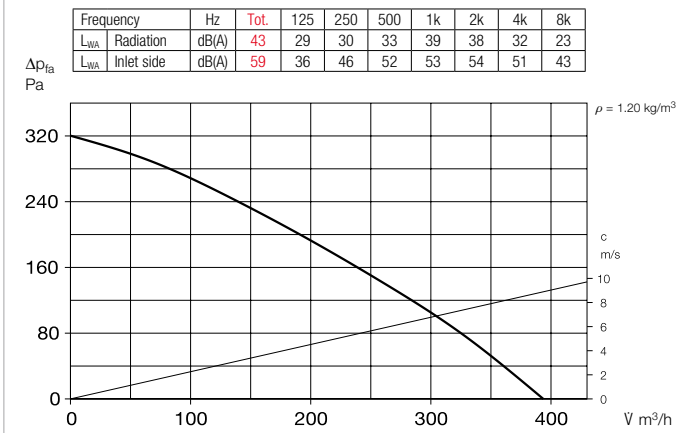
<sup>3)</sup> Transformer control units must be provided in noise-relevant cases. Electronic phase angle control can cause disturbing magnetisation humming.

\* See ErP product data sheet at www.HeliosSelect.de.

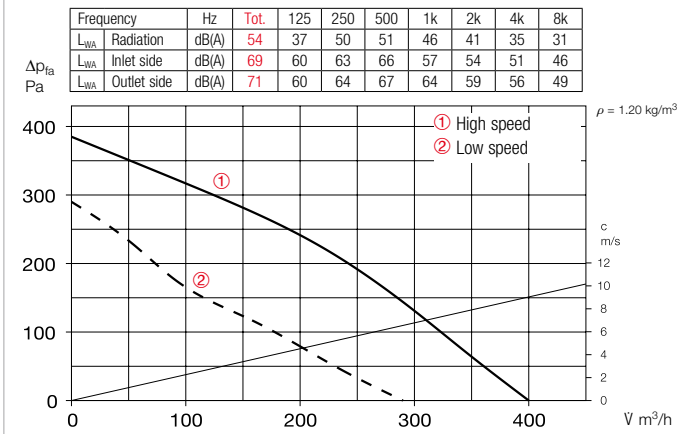
**Performance curves RR 125 C**



**Performance curves RRK 125**



**Performance curves SVR 125 B**



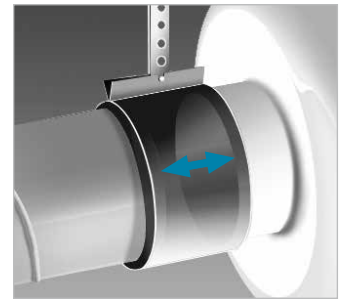
References	Page
Techn. description	360
Selection table	361
Planning information	14 ff.
Modular system	358

Other accessories	Page
Filter, heating elements and silencers	481 ff.
Temperature control systems for heating elements	487, 491 ff.
Flexible ventilation ducts, ventilation grilles, fittings, roof outlets	561 ff.
Disc valves	582 ff.
Speed controllers, controllers and switches	599 ff.

**Accessories**

**Pipe clamp connectors**

**BM 125** Ref. no. 05076  
For structure-borne noise-free connection of fan and piping and for suspension (1 set = 2 pcs). Mount ventilation duct and fan connector at a distance and fold sleeve over during installation.



**Mounting bracket for RR**

**MK 4** Ref. no. 05824  
**Mounting bracket for RRK**  
**MK 1** Ref. no. 05821  
Made of galvanised steel sheet.



**External wall shutter**

**VK 125** Ref. no. 00857  
Automatic made of plastic, white.



**External wall cover grille**

**G 160** Ref. no. 00893  
Made of plastic, white.

**Protection grille**

**SGR 125** Ref. no. 05064  
For inlet and outlet side installation. Made of powder-coated steel wire.



**Duct shutter**

**RSKK 125** Ref. no. 05107  
Automatic, made of plastic



**Flexible cross talk silencer**

**FSD 125** Ref. no. 00677  
Made of aluminium pipe with double-sided plug-in connectors. Sound insulation lining 50 mm thick, installation length 1 m.



**Air filter box**

**LFBR 125 Coarse 70%\*** 08577  
**LFBR 125 ePM1 50%\*** 08531  
Air filter with large surface area, for installation in pipeline.



**Electric heating element**

**EHR-R 0.8/125** 0.8 kW No.08709  
**EHR-R 1.2/125** 1.2 kW No.09433  
- with integrated temp. control  
**EHR-R 0.8/125 TR** 0.8 kW No.05293  
Room or duct sensor (TFK/TFR, Accessories) required.

**Temperature control system for electric heating element**

**EHR-R**  
**EHS** Ref. no. 05002

**Warm water heating element**

**WHR 125** Ref. no. 09480  
Compact heat exchanger for installation in duct system.



**Temperature control system for warm water heating element**

**WHST 300 T38** Ref. no. 08817



\* See product page 484 for detailed description.