

SB EC 125



Virtually silent with high volume output and pressure performance. Ideal for cleaning and inspection.



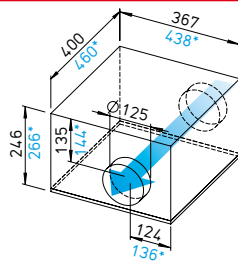
SVS EC 125



Lowest installation height. Ideal for limited installation spaces. With sound-insulating mineral wool lining for particularly low-noise operation.



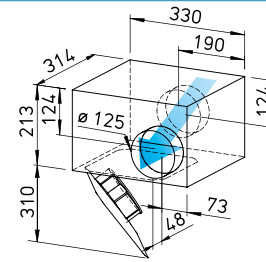
Dimensions SB EC 125



Dim. in mm

SB EC 125 A, *SB EC 125 B

Dimensions SVS EC 125



Dim. in mm

Common features SilentBox SB EC and SlimVent SVS EC

Installation

No restrictions in any position (horizontal, vertical, diagonal) through corresponding installation for supply or extract ventilation. Mounting bracket included in delivery.

Drive

Energy-saving, speed-controllable EC external rotor motor in protection category IP44 with the highest level of efficiency. Maintenance-free and radio interference-free, ball bearing mounted. Motor and impeller dynamically balanced for low-noise operation.

Power control

Continuously variable speed control with internal (delivery) or external potentiometer or continuously variable speed control with universal control system

(see table). Performance levels are shown in the performance curve as an example.

Motor protection

Integrated electronic temperature monitoring system for EC motor and electronics.

Noise

See page 417

Description SilentBox EC

Casing

Designed as a silencer. Equipped with abrasion-resistant, sound-absorbing mineral fibre boards (50 mm). Removable cover with locking clamp. Freely accessible fan. Removable motor-impeller unit, the removal area must be considered. Inlet and outlet side connectors with rubber lip seal corresponds to standard duct Ø. All parts made of galvanised steel sheet.

Impeller

With backward curved blades. Inlet via nozzle. SB EC 125 A forward curved impeller in aerodynamically optimised volute casing, galvanised steel sheet.

Electrical connection

Terminal box (IP54) mounted to external cable.

Protection category

IP44 (SB EC 125 A IP54) with connected duct system.

Description SlimVent SVS EC

Casing

Extremely flat casing with sound-insulating, over 50 mm thick mineral wool lining and glass fibre surface. The acoustic box placed in front of the fan wheel significantly reduces the inlet-side noises. The radiated noises are reduced to a lesser extent (see noise data above the

performance diagrams).

The retractable motor-impeller unit allows inspection and cleaning without dismantling the system components. The removal area of the motor-impeller unit must be considered.

Impeller

Energy-saving centrifugal impeller with backward curved blades made of high-quality plastic.

Electrical connection

Terminal box (IP54) mounted to external cable.

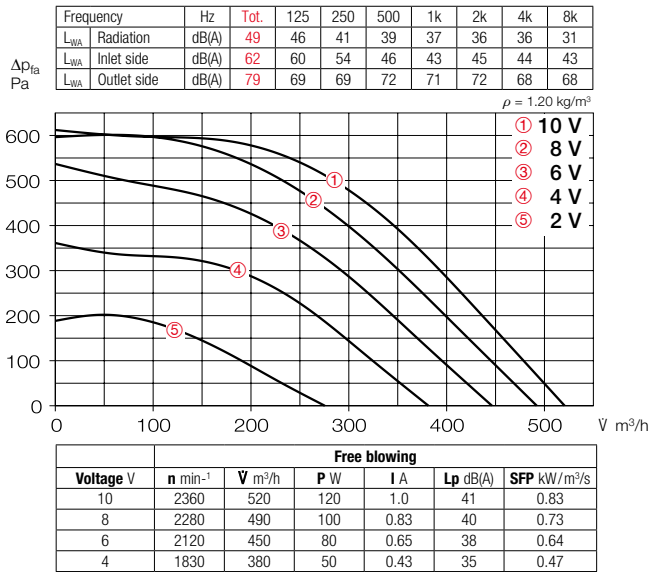
Protection category

IP44 with connected duct system.

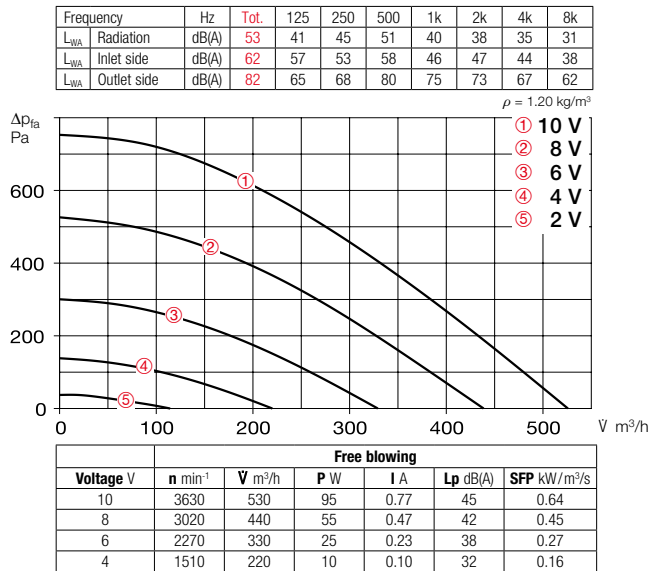
Type	Ref. no.	Connection Ø	Flow rate Free blowing	Rated speed	Sound press. case radiation	Power consum.	Current consum.	Wiring diagram	Max. air flow temp.	Wgt net aprx.	Universal control system		Speed potentiometer flush-mount.		Speed potentiometer surf-mount.	
											Type	Ref. no.	Type	Ref. no.	Type	Ref. no.
Type SB EC, Single-phase alternating current, 230 V, 50/60 Hz, EC motor, IP54 (A), IP44 (B)																
SB EC 125 A	06132	125	520	2890	41	0.12	1.03	979	60	10.0	EUR EC ¹⁾²⁾	01347	PU 10 ¹⁾	01734	PA 10 ¹⁾	01735
SB EC 125 B	09624	125	530	3600	45	0.10	0.81	979	60	12.0	EUR EC ¹⁾²⁾	01347	PU 10 ¹⁾	01734	PA 10 ¹⁾	01735
Type SVS EC, Single-phase alternating current, 230 V, 50/60 Hz, EC motor, IP44																
SVS EC 125	00016	125	540	3530	53	0.10	0.82	979	60	6.2	EUR EC ¹⁾²⁾	01347	PU 10 ¹⁾	01734	PA 10 ¹⁾	01735

¹⁾ Multiple EC fans can normally be connected. ²⁾ alternative electronic diff. pressure/ temperature controller (EDR/ETR, No. 01437/01438) or three level speed switch (SU/SA, No. 04266/04267), see accessories.

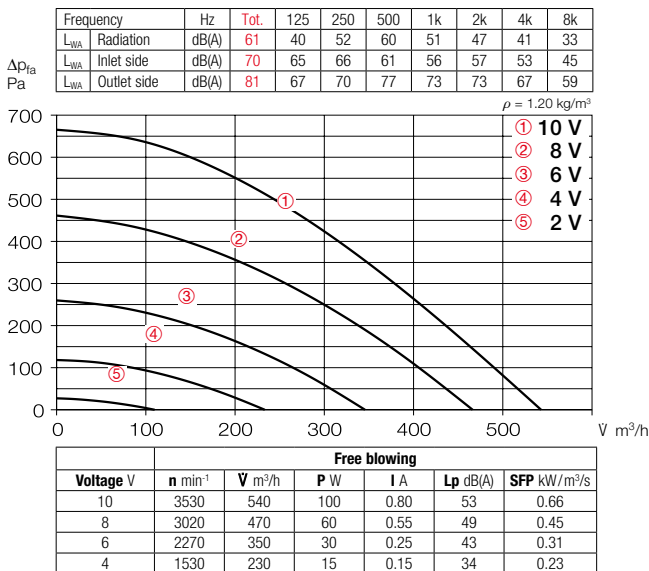
Performance curves SB EC 125 A



Performance curves SB EC 125 B



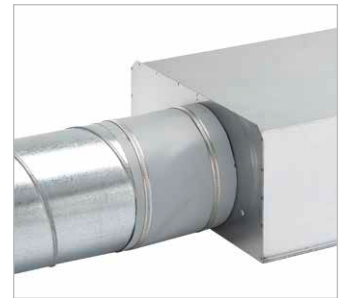
Performance curves SVS EC 125



Accessories

Flexible connecting sleeve

FM 125 Ref. no. 01682
Includes 2 hose clamps; for installation between fan and duct system. Prevents structure-borne noise transmission and bridges installation tolerances. 2 pcs required for inlet and outlet side application.



External wall shutter

VK 125 Ref. no. 00857
Automatic made of plastic, white.



External wall cover grille

G 160 Ref. no. 00893
Made of plastic, white.



Protection grille

SGR 125 Ref. no. 05064
For inlet and outlet side installation. Made of powder-coated steel wire.



Duct shutter

RSKK 125 Ref. no. 05107
Automatic, made of plastic.



Flexible cross talk silencer

FSD 125 Ref. no. 00677
Made of aluminium pipe with double-sided plug-in connectors. Sound insulation lining 50 mm thick, installation length 1 m.



Air filter box

LFBR 125 Coarse 70%* 08577
LFBR 125 ePM1 50%* 08531
Air filter with large surface area, for installation in pipeline.



Electric heating element

EHR-R 0.8/125 0.8 kW No. 08709
EHR-R 1.2/125 1.2 kW No. 09433
- with integrated temp. control
EHR-R 0.8/125 TR 0.8 kW No. 05293
Room or duct sensor (TFK/TFR, Accessories) required.



Temperature control system for electric heating element

EHR-R
EHS Ref. no. 05002



Warm water heating element

WHR 125 Ref. no. 09480
Compact heat exchanger for installation in duct system.



Temperature control system for warm water heating element

WHST 300 T38 No. 08817

* See product page 484 for detailed description.