

**SB EC 160**



Virtually silent with high volume output and pressure performance. Ideal for cleaning and inspection.



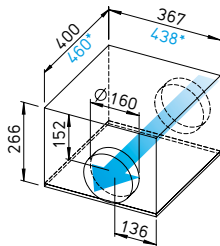
**SVS EC 160**



**Lowest installation height. Ideal for limited installation spaces.** With sound-insulating mineral wool lining for particularly low-noise operation.



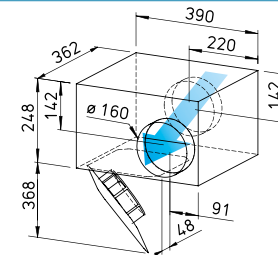
**Dimensions SB EC 160**



Dim. in mm

SB EC 160 A, \*SB EC 160 B

**Dimensions SVS EC 160**



Dim. in mm

**Common features SilentBox SB EC and SlimVent SVS EC**

**Installation**

See page 410.

**Drive**

Energy-saving, speed-controllable EC external rotor motor in protection category IP44 with the highest level of efficiency. Maintenance-free and radio interference-free, ball bearing mounted. Motor and impeller dynamically balanced for low-noise operation.

**Power control**

Continuously variable speed control with internal (delivery) or external potentiometer or continuously variable speed control with universal control system (see table). Performance levels are shown in the performance curve as an example.

**Motor protection**

Integrated electronic temperature monitoring system for EC motor and electronics.

**Noise**

See page 417.

**Description SilentBox EC**

**Casing**

Designed as a silencer. Equipped with abrasion-resistant, sound-absorbing mineral fibre boards (50 mm). Removable cover with locking clamp. Freely accessible fan. Removable motor-impeller unit, the removal area must be considered. Inlet and outlet side connectors with rubber lip seal corresponds to standard duct Ø. All parts made of galvanised steel sheet.

**Impeller**

With backward curved blades.

Inlet via nozzle. SB EC 125 A forward curved impeller in aerodynamically optimised volute casing, galvanised steel sheet.

**Electrical connection**

Terminal box (IP54) mounted to external cable.

**Protection category**

IP44 (SB EC 160 A IP54) with connected duct system.

**Description SlimVent SVS EC**

**Casing**

Extremely flat casing with sound-insulating, over 50 mm thick mineral wool lining and glass fibre surface. The acoustic box placed in front of the fan wheel significantly reduces the inlet-side noises. The radiated noises are reduced to a lesser extent (see noise data above the performance diagrams).

The retractable motor-impeller unit allows inspection and cleaning without dismantling the system components. The removal area of the motor-impeller unit must be considered.

**Impeller**

Energy-saving centrifugal impeller with backward curved blades made of high-quality plastic.

**Electrical connection**

Terminal box (IP54) mounted to external cable.

**Protection category**

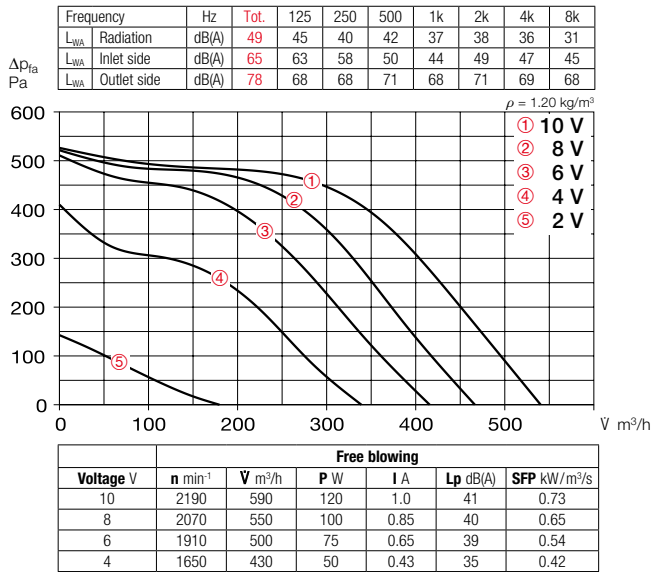
IP44 with connected duct system.

Type	Ref. no.	Connection Ø	Flow rate Free blowing	Rated speed	Sound press. case radiation	Power consum.	Current consum.	Wiring diagram	Max. air flow temp.	Wgt net aprx.	Universal control system		Speed potentiometer			
											Type	Ref. no.	Type	Ref. no.	Type	Ref. no.
		mm	V m³/h	min <sup>-1</sup>	dB(A) in 1 m	kW	A	No.	+ °C	kg	Type	Ref. no.	Type	Ref. no.	Type	Ref. no.
<b>Type SB EC, Single-phase alternating current, 230 V, 50/60 Hz, EC motor, IP54 (A), IP44 (B)</b>																
SB EC 160 A	06136	160	580	2630	41	0.12	1.02	979	60	10.0	EUR EC <sup>1)2)</sup>	01347	PU 10 <sup>1)</sup>	01734	PA 10 <sup>1)</sup>	01735
SB EC 160 B	09625	160	590	3610	46	0.10	0.81	979	60	12.0	EUR EC <sup>1)2)</sup>	01347	PU 10 <sup>1)</sup>	01734	PA 10 <sup>1)</sup>	01735
<b>Type SVS EC, Single-phase alternating current, 230 V, 50/60 Hz, EC motor, IP44</b>																
SVS EC 160 A <sup>3)</sup>	00017	160	570	3610	51	0.10	0.80	979	60	8.0	EUR EC <sup>1)2)</sup>	01347	PU 10 <sup>1)</sup>	01734	PA 10 <sup>1)</sup>	01735
SVS EC 160 B	00018	160	780	2920	52	0.12	0.97	979	60	7.5	EUR EC <sup>1)2)</sup>	01347	PU 10 <sup>1)</sup>	01734	PA 10 <sup>1)</sup>	01735

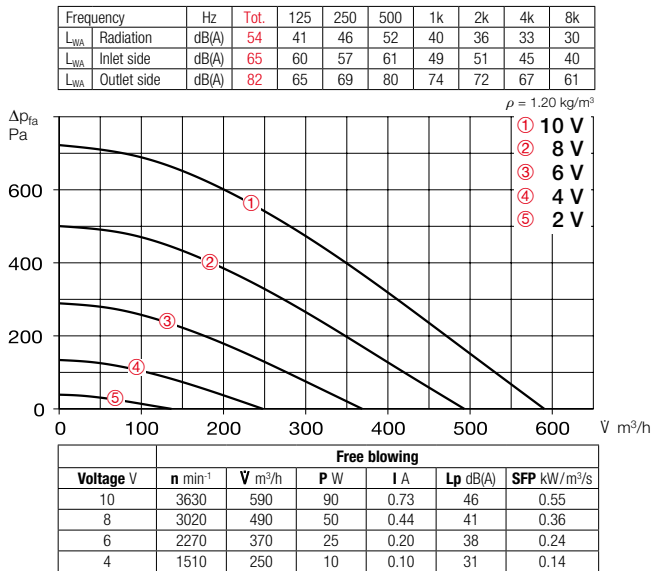
<sup>1)</sup> Multiple EC fans can normally be connected. <sup>2)</sup> alternative electronic diff. pressure/ temperature controller (EDR/VETR, No. 01437/01438) or three level speed switch (SU/SA, No. 04266/04267), see accessories.

<sup>3)</sup> Performance diagram at [www.HeliosSelect.de](http://www.HeliosSelect.de).

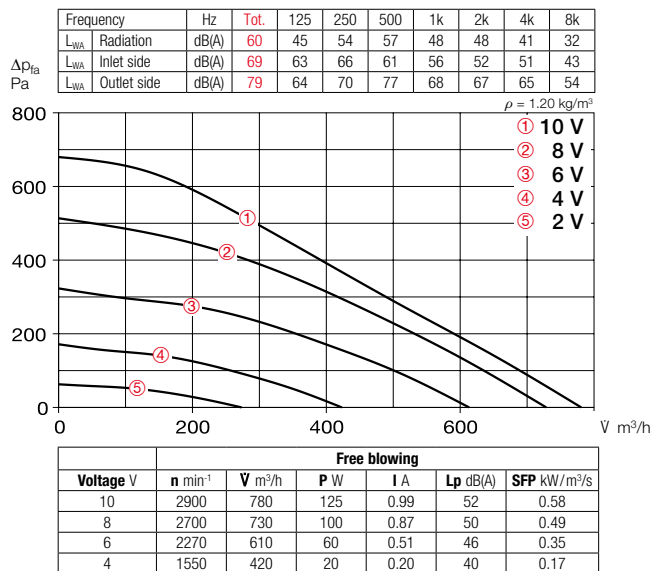
### Performance curves SB EC 160 A



### Performance curves SB EC 160 B



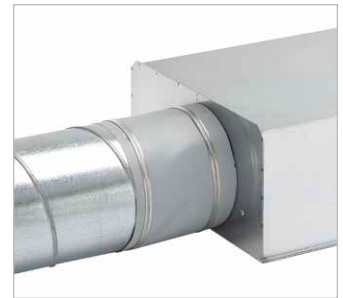
### Performance curves SVS EC 160 B



### Accessories

#### Flexible connecting sleeve

**FM 160** Ref. no. 01684  
Includes 2 hose clamps; for installation between fan and duct system. Prevents structure-borne noise transmission and bridges installation tolerances.  
2 pcs required for inlet and outlet side application.



#### External wall shutter

**VK 160** Ref. no. 00892  
Automatic made of plastic, white.



#### External wall cover grille

**G 160** Ref. no. 00893  
Made of plastic, white.



#### Protection grille

**SGR 160** Ref. no. 05069  
For inlet and outlet side installation.  
Made of galvanised steel.



#### Duct shutter

**RSK 160** Ref. no. 05669  
Automatic, made of metal.



#### Flexible cross talk silencer

**FSD 160** Ref. no. 00678  
Made of aluminium pipe with double-sided plug-in connectors. Sound insulation lining 50 mm thick, installation length 1 m.



#### Air filter box

**LFBR 160 Coarse 70%\*** 08578  
**LFBR 160 ePM1 50%\*** 08532  
Air filter with large surface area, for installation in pipeline.

#### Electric heating element

**EHR-R 1.2/160** 1.2 kW No. 09434  
**EHR-R 2.4/160** 2.4 kW No. 09435  
**EHR-R 5/160** 5.0 kW No. 08710  
– with integrated temp. control  
**EHR-R 2.4/160 TR** 2.4 kW No. 05294  
Room or duct sensor (TFK/TFR, Accessories) required.



#### Temperature control system for electric heating element

**EHR-R**  
**EHS** Ref. no. 05002



#### Warm water heating element

**WHR 160** Ref. no. 09481  
Compact heat exchanger for installation in duct system.



#### Temperature control system for warm water heating element

**WHST 300 T38** No. 08817



\* See product page 484 for detailed description.