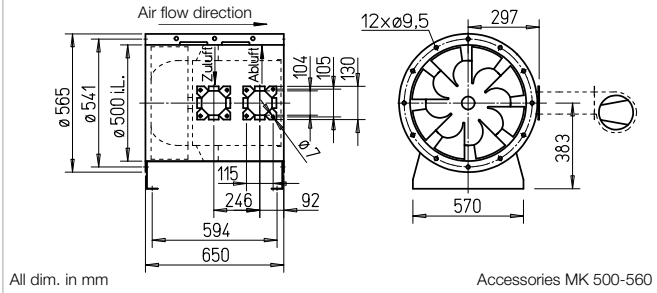


**B VAR 500 F600**



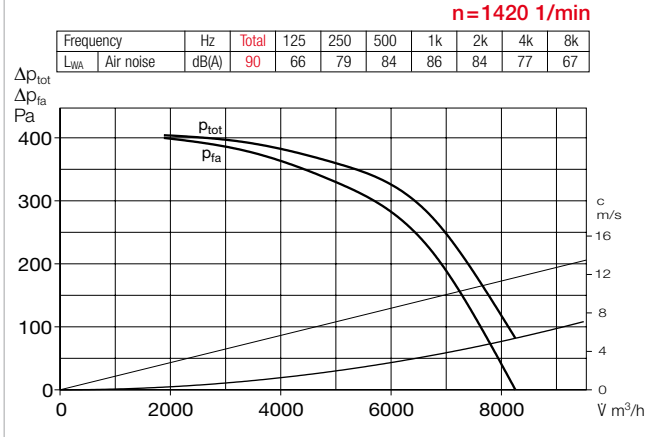
**Dimensions B VAR 500 F600**



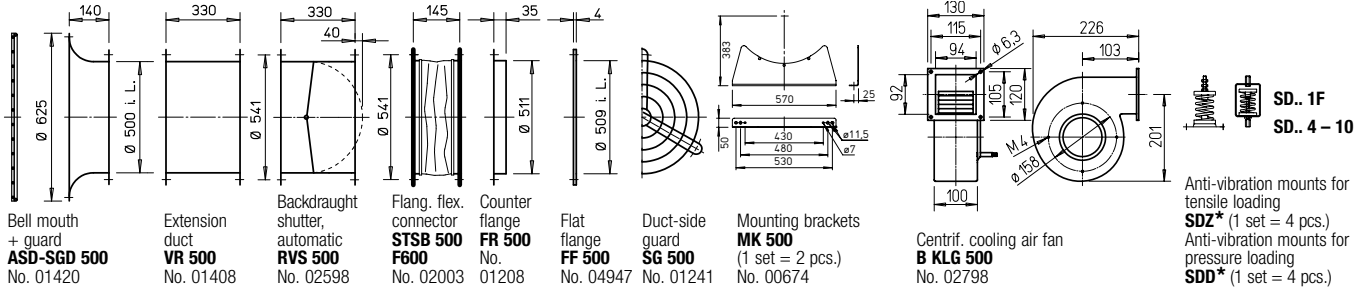
All dim. in mm

Accessories MK 500-560

**Performance curves B VAR 500/4 F600**



**Accessories B VAR 500 F600** Description see page 161 ff.



\* Type allocation see table, last column

- Casing**  
 Duct with flanges on both sides DIN 24155 pt. 3. Welded construction, hot-dip galvanised. Welded guide vane with inner hub for mounting the flange motor, hot-dip galvanised.
- Impeller**  
 Optimised for high pressure and volume output. Special development with spatially curved hot-dip galvanised steel blades.
- Motor**  
 Direct through Efficient IE3 three phase motor. Pole-switching
- Motor protection**  
 All types (except pole-switching) have PTC resistors as standard and must be protected with aa full motor protection device (MSA, Ref. no. 01289). This must be bridged in smoke extraction situation.
- Installation**  
 Installation in any position. Suitable for installation within and outside of the fire zone.
- fans with IEC standard motor.**  
 Protection class IP55. Insulation class H. External cable with sheathing.
- Electrical connection**  
 Standard terminal box (IP54) mounted for installation outside of the fire zone.
- Safety information**  
 Protection against accidental contact for impeller must be ensured pursuant to DIN EN ISO 13857.
- Centrifugal cooling air fan**  
 The centrifugal cooling air fan B KLG is a required accessory for ensuring motor cooling. Alternative forced ventilation fan upon request. Minimum cooling air flow rate  $V = 250 \text{ m}^3/\text{h}$ .
- Certification**  
 The smoke extraction fans B VARD have been tested according to DIN EN 12101-3. Certificate of performance reliability:  
 F600: 0036-CPR-RG05-02

Information		Page	
Techn. description		84 f.	
Project planning information		13 ff.	
Accessory details			
Mounting accessories		161 ff.	
Centrif. cooling air fan		160	
Gas warning systems, switch and control technology		168 ff.	

Type	Ref. no.	Speed	Output free-blowing	Nom. motor power (output)	Nominal voltage	Power consumption	Wiring diagram	max. air flow temp. <sup>1)</sup>	Net weight approx.	Smoke exhaust fan control system incl. full motor protection	Anti-vibration mount <sup>2)</sup>					
											Pressure		Tensile			
		min <sup>-1</sup>	V m <sup>3</sup> /h	kW	V	A	No.	+°C	kg	Type	Ref. no.	Type	Ref. no.	Type	Ref. no.	
<b>F600</b> Three phase motor, 50 Hz, protection class IP54																
<b>B VARD 500/4 F600</b>	02813	1435	8370	2.2	400	4.56	776	600	101	<b>EVS-D 007</b>	04587	<b>SDD 4</b>	01944	<b>SDZ 4</b>	01945	

<sup>1)</sup> Smoke extraction (once 120 min.).

<sup>2)</sup> Types SDZ not permitted for installation within fire zone.