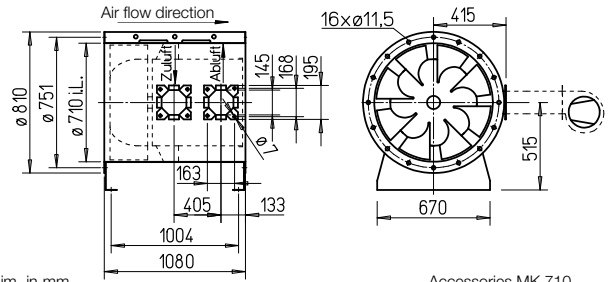


## B VAR 710 F600



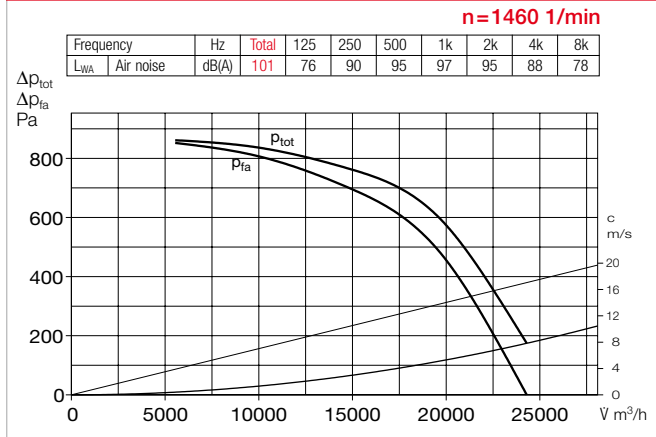
## Dimensions B VAR 710 F600



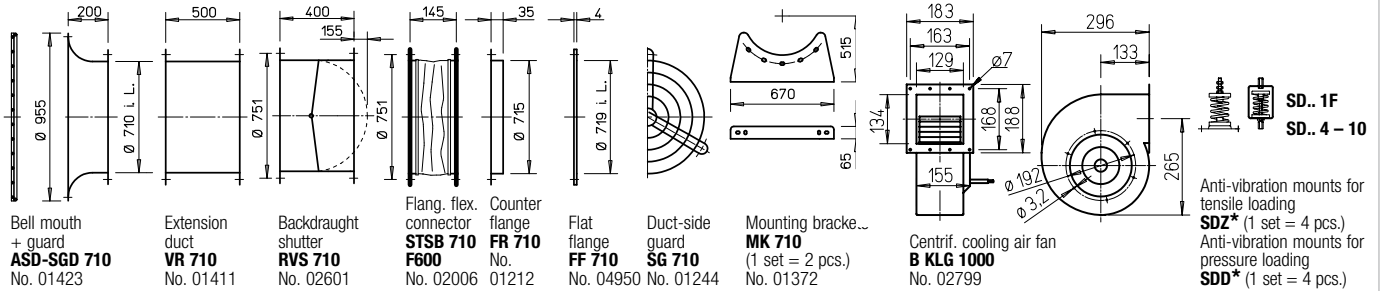
All dim. in mm

Accessories MK 710

## Performance curves B VAR 710/4 F600



## Accessories B VAR 710 F600 Description see page 161 ff.



\* Type allocation see table, last column

- Casing**  
Duct with flanges on both sides DIN 24155 pt. 3. Welded construction, hot-dip galvanised. Welded guide vane with inner hub for mounting the flange motor, hot-dip galvanised.
- Impeller**  
Optimised for high pressure and volume output. Special development with spatially curved hot-dip galvanised steel blades.
- Motor**  
Direct through Efficient IE3 three phase motor. Pole-switching fans with IEC standard motor. Protection class IP55. Insulation class H. External cable with sheathing.
- Motor protection**  
All types (except pole-switching) have PTC resistors as standard and must be protected with aa full motor protection device (MSA, Ref. no. 01289). This must be bridged in smoke extraction situation.
- Installation**  
Installation in any position. Suitable for installation within and outside of the fire zone.
- Electrical connection**  
Standard terminal box (IP54) mounted for installation outside of the fire zone.
- Safety information**  
Protection against accidental contact for impeller must be ensured pursuant to DIN EN ISO 13857.
- Centrifugal cooling air fan**  
The centrifugal cooling air fan B KLG is a required accessory for ensuring motor cooling. Alternative forced ventilation fan upon request. Minimum cooling air flow rate  $V = 565 \text{ m}^3/\text{h}$ .
- Certification**  
The smoke extraction fans B VARD have been tested according to DIN EN 12101-3. Certificate of performance reliability:  
F600: 0036-CPR-RG05-02

Information	Page
Techn. description	84 ff.
Project planning information	13 ff.
<b>■ Accessory details</b>	
Mounting accessories	161 ff.
Centrif. cooling air fan	160
Gas warning systems, switch and control technology	168 ff.

Type	Ref. no.	Speed	Output free-blowing	Norm. motor power (output)	Nominal voltage	Power consumption	Wiring diagram	max. air flow temp. <sup>1)</sup>	Net weight approx.	Smoke exhaust fan control system incl. full motor protection		Anti-vibration mount <sup>2)</sup>					
										Type	Ref. no.	Pressure	Tensile	Type	Ref. no.	Type	Ref. no.
<b>F600</b> Three phase motor, 50 Hz, protection class IP54																	
<b>B VARD 710/4 F600</b>	02853	1470	24460	11.0	400	20.9	776	600	283	<b>EVS-SD 030</b>	04557	<b>SDD 6</b>	01926	<b>SDZ 6</b>	01927		

<sup>1)</sup> Smoke extraction (once 120 min.).

<sup>2)</sup> Types SDZ not permitted for installation within fire zone.