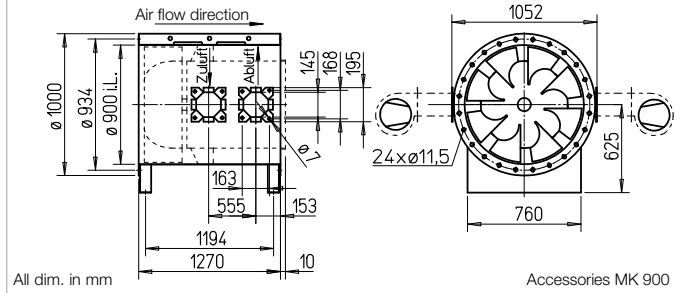


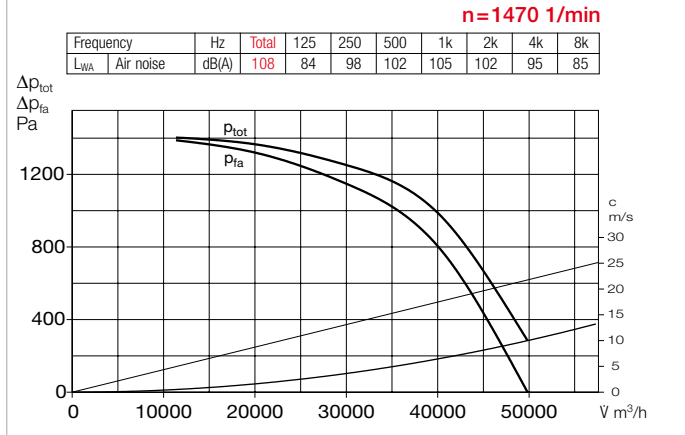
B VAR 900 F600



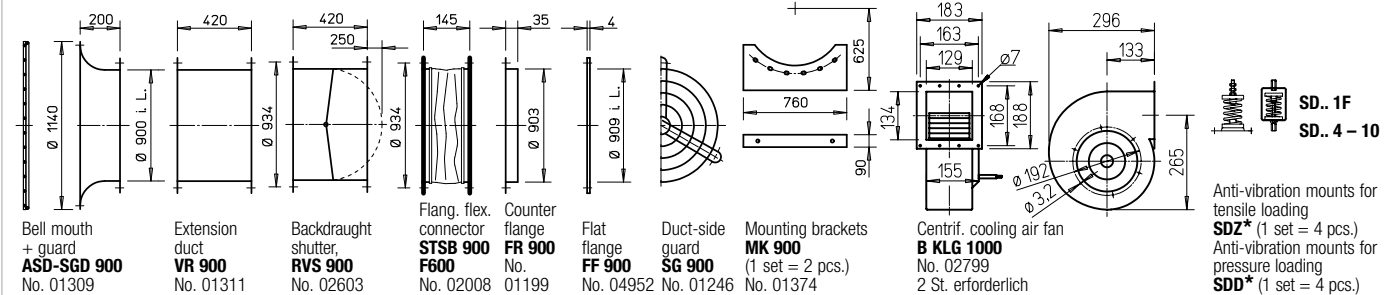
Dimensions B VAR 900 F600



Performance curves B VAR 900/4 F600



Accessories B VAR 900 F600 Description see page 161 ff.



- Casing**
 Duct with flanges on both sides DIN 24155 pt. 3. Welded construction, hot-dip galvanised. Welded guide vane with inner hub for mounting the flange motor, hot-dip galvanised.
- Impeller**
 Optimised for high pressure and volume output. Special development with spatially curved hot-dip galvanised steel blades.
- Motor**
 Direct through Efficient IE3 three phase motor. Pole-switching fans with IEC standard motor. Protection class IP55. Insulation class H. External cable with sheathing.
- Motor protection**
 All types (except pole-switching) have PTC resistors as standard and must be protected with aa full motor protection device (MSA, Ref. no. 01289). This must be bridged in smoke extraction situation.
- Installation**
 Installation in any position. Suitable for installation within and outside of the fire zone.
- Electrical connection**
 Standard terminal box (IP54) mounted for installation outside of the fire zone.
- Safety information**
 Protection against accidental contact for impeller must be ensured pursuant to DIN EN ISO 13857.
- Centrifugal cooling air fan**
 The centrifugal cooling air fan B KLG is a required accessory for ensuring motor cooling. Alternative forced ventilation fan upon request. Minimum cooling air flow rate $V = 850 \text{ m}^3/\text{h}$.
- Certification**
 The smoke extraction fans B VARD have been tested according to DIN EN 12101-3. Certificate of performance reliability: F600: 0036-CPR-RG05-02

Information	Page
Techn. description	84 ff.
Project planning information	13 ff.
Accessory details	
Mounting accessories	161 ff.
Centrif. cooling air fan	160
Gas warning systems, switch and control technology	168 ff.

Type	Ref. no.	Speed	Output free-blowing	Norm. motor power. (output)	Nominal voltage	Power consumption	Wiring diagram	max. air flow temp. ¹⁾	Net weight approx.	Smoke exhaust fan control system incl. full motor protection		Anti-vibration mount ²⁾					
										Type	Ref. no.	Pressure	Tensile	Type	Ref. no.	Type	Ref. no.
F600 Three phase motor, 50 Hz, protection class IP54																	
B VARD 900/4 F600	02873	1480	50000	37.0	400	66.8	776	600	655	EVS-SD 036	04550	SDD 8	01930	SDZ 8	01931		

¹⁾ Smoke extraction (once 120 min.). ²⁾ Types SDZ not permitted for installation within fire zone.