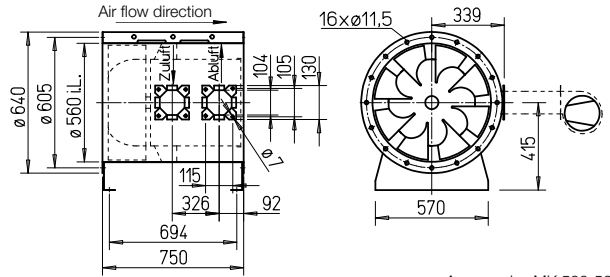


## B VAR 560 F600



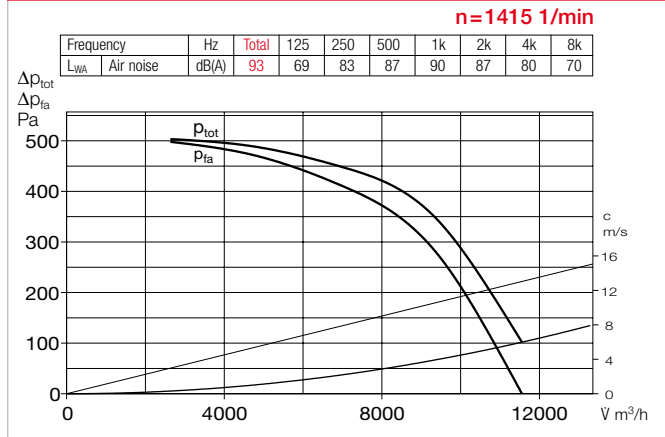
## Dimensions B VAR 560 F600



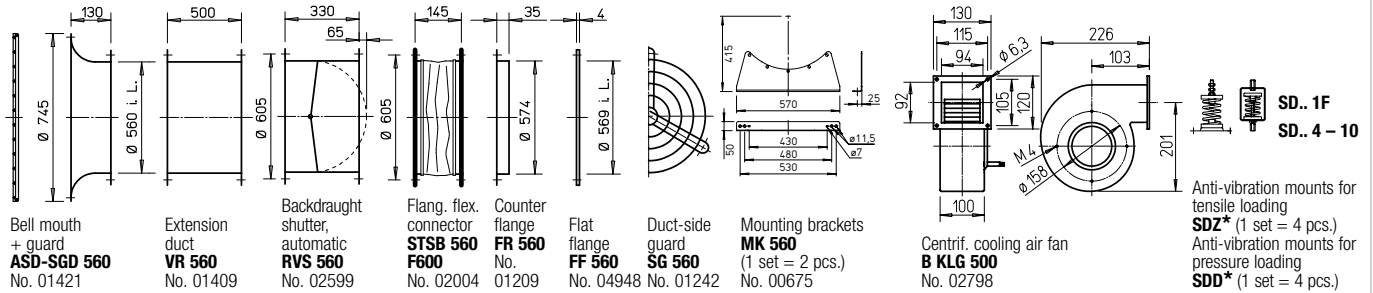
All dim. in mm

Accessories MK 500-560

## Performance curves B VAR 560/4 F600



## Accessories B VAR 560 F600 Description see page 161 ff.



\* Type allocation see table, last column

- Casing**  
 Duct with flanges on both sides DIN 24155 pt. 3. Welded construction, hot-dip galvanised. Welded guide vane with inner hub for mounting the flange motor, hot-dip galvanised.
- Impeller**  
 Optimised for high pressure and volume output. Special development with spatially curved hot-dip galvanised steel blades.
- Motor**  
 Direct through Efficient IE3 three phase motor. Pole-switching fans with IEC standard motor.
- Protection class IP55.** Insulation class H. External cable with sheathing.
- Motor protection**  
 All types (except pole-switching) have PTC resistors as standard and must be protected with aa full motor protection device (MSA, Ref. no. 01289). This must be bridged in smoke extraction situation.
- Installation**  
 Installation in any position. Suitable for installation within and outside of the fire zone.
- Electrical connection**  
 Standard terminal box (IP54) mounted for installation outside of the fire zone.
- Safety information**  
 Protection against accidental contact for impeller must be ensured pursuant to DIN EN ISO 13857.
- Centrifugal cooling air fan**  
 The centrifugal cooling air fan B KLG is a required accessory for ensuring motor cooling. Alternative forced ventilation fan upon request. Minimum cooling air flow rate  $V = 340 \text{ m}^3/\text{h}$ .
- Certification**  
 The smoke extraction fans B VARD have been tested according to DIN EN 12101-3. Certificate of performance reliability: F600: 0036-CPR-RG05-02

Information	Page
Techn. description	84 f.
Project planning information	13 ff.
<b>■ Accessory details</b>	
Mounting accessories	161 ff.
Centrif. cooling air fan	160
Gas warning systems, switch and control technology	168 ff.

Type	Ref. no.	Speed	Output free-blowing	Norm. motor power (output)	Nominal voltage	Power consumption	Wiring diagram	max. air flow temp. <sup>1)</sup>	Net weight approx.	Smoke exhaust fan control system incl. full motor protection	Anti-vibration mount <sup>2)</sup>				
											Pressure		Tensile		
		min <sup>-1</sup>	V m <sup>3</sup> /h	kW	V	A	No.	+°C	kg	Type	Ref. no.	Type	Ref. no.	Type	Ref. no.
<b>F600</b> Three phase motor, 50 Hz, protection class IP54															
<b>B VARD 560/4 F600</b>	02828	1440	11470	3.0	400	6.15	776	600	129	<b>EVS-SD 024</b> 04563	<b>SDD 4</b> 01944	<b>SDZ 4</b>	01945		

<sup>1)</sup> Smoke extraction (once 120 min.).

<sup>2)</sup> Types SDZ not permitted for installation within fire zone.