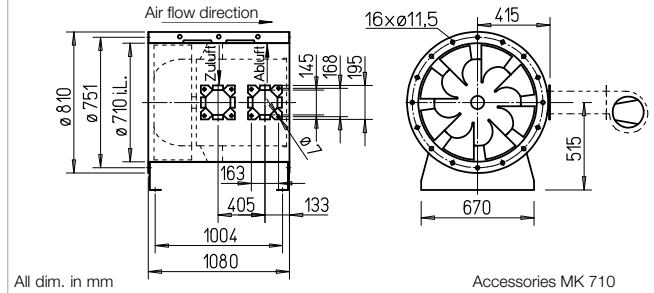


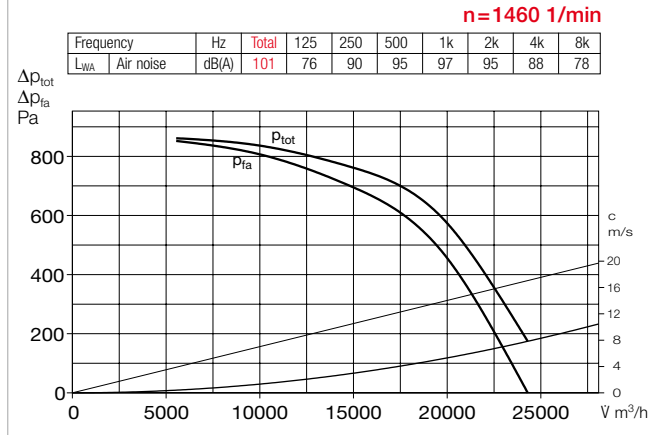
B VAR 710 F600



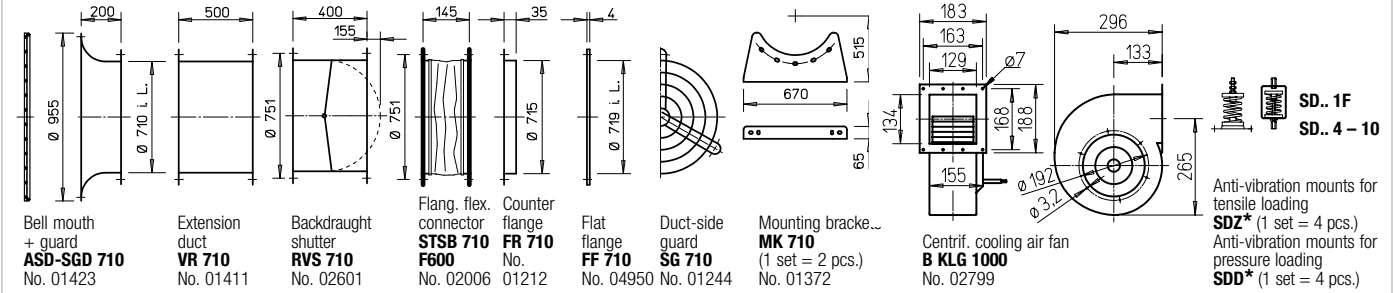
Dimensions B VAR 710 F600



Performance curves B VAR 710/4 F600



Accessories B VAR 710 F600 Description see page 161 ff.



* Type allocation see table, last column

- Casing**
 Duct with flanges on both sides DIN 24155 pt. 3. Welded construction, hot-dip galvanised. Welded guide vane with inner hub for mounting the flange motor, hot-dip galvanised.
- Impeller**
 Optimised for high pressure and volume output. Special development with spatially curved hot-dip galvanised steel blades.
- Motor**
 Direct through Efficient IE3 three phase motor. Pole-switching fans with IEC standard motor. Protection class IP55. Insulation class H. External cable with sheathing.
- Motor protection**
 All types (except pole-switching) have PTC resistors as standard and must be protected with aa full motor protection device (MSA, Ref. no. 01289). This must be bridged in smoke extraction situation.
- Installation**
 Installation in any position. Suitable for installation within and outside of the fire zone.
- Electrical connection**
 Standard terminal box (IP54) mounted for installation outside of the fire zone.
- Safety information**
 Protection against accidental contact for impeller must be ensured pursuant to DIN EN ISO 13857.
- Centrifugal cooling air fan**
 The centrifugal cooling air fan B KLG is a required accessory for ensuring motor cooling. Alternative forced ventilation fan upon request. Minimum cooling air flow rate $V = 565 \text{ m}^3/\text{h}$.
- Certification**
 The smoke extraction fans B VARD have been tested according to DIN EN 12101-3. Certificate of performance reliability: F600: 0036-CPR-RG05-02

| Information | Page |
|--|---------|
| Techn. description | 84 ff. |
| Project planning information | 13 ff. |
| Accessory details | |
| Mounting accessories | 161 ff. |
| Centrif. cooling air fan | 160 |
| Gas warning systems, switch and control technology | 168 ff. |

| Type | Ref. no. | Speed | Output free-blowing | Norm. motor power (output) | Nominal voltage | Power consumption | Wiring diagram | max. air flow temp. ¹⁾ | Net weight approx. | Smoke exhaust fan control system incl. full motor protection | | Anti-vibration mount ²⁾ | | | | | |
|---|----------|-------|---------------------|----------------------------|-----------------|-------------------|----------------|-----------------------------------|--------------------|--|----------|------------------------------------|---------|--------------|----------|------|----------|
| | | | | | | | | | | Type | Ref. no. | Pressure | Tensile | Type | Ref. no. | Type | Ref. no. |
| F600 Three phase motor, 50 Hz, protection class IP54 | | | | | | | | | | | | | | | | | |
| B VARD 710/4 F600 | 02853 | 1470 | 24460 | 11.0 | 400 | 20.9 | 776 | 600 | 283 | EVS-SD 030 | 04557 | SDD 6 | 01926 | SDZ 6 | 01927 | | |

¹⁾ Smoke extraction (once 120 min.).

²⁾ Types SDZ not permitted for installation within fire zone.