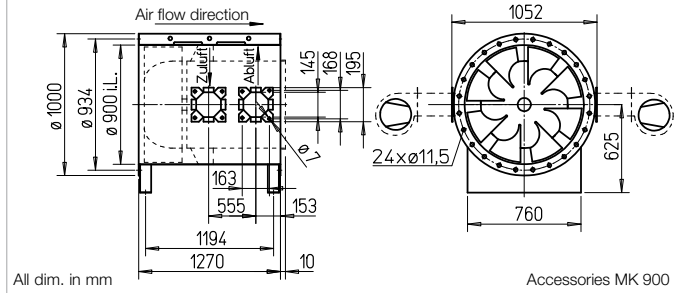


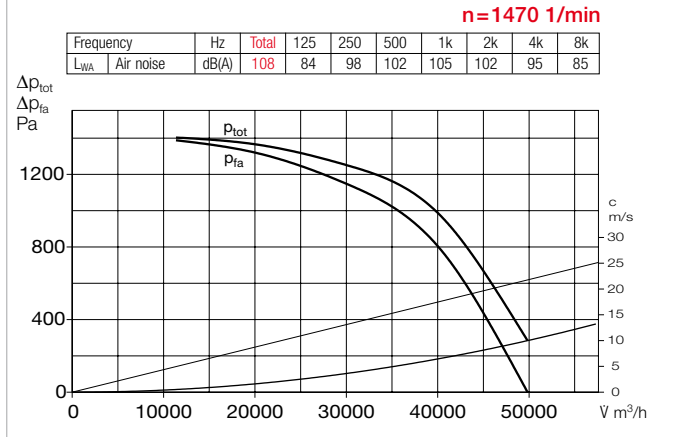
B VAR 900 F600



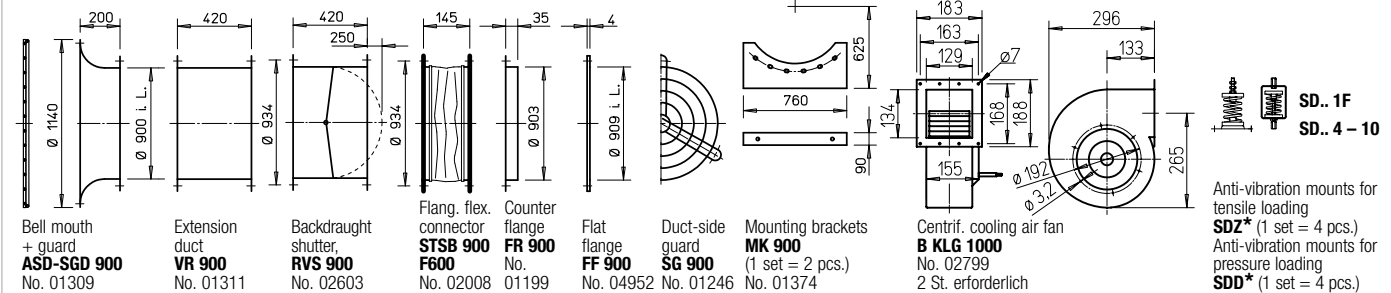
Dimensions B VAR 900 F600



Performance curves B VAR 900/4 F600



Accessories B VAR 900 F600 Description see page 161 ff.



■ Casing

Duct with flanges on both sides DIN 24155 pt. 3. Welded construction, hot-dip galvanised. Welded guide vane with inner hub for mounting the flange motor, hot-dip galvanised.

■ Impeller

Optimised for high pressure and volume output. Special development with spatially curved hot-dip galvanised steel blades.

■ Motor

Direct through Efficient IE3 three phase motor. Pole-switching

fans with IEC standard motor. Protection class IP55. Insulation class H. External cable with sheathing.

■ Motor protection

All types (except pole-switching) have PTC resistors as standard and must be protected with aa full motor protection device (MSA, Ref. no. 01289). This must be bridged in smoke extraction situation.

■ Installation

Installation in any position. Suitable for installation within and outside of the fire zone.

■ Electrical connection

Standard terminal box (IP54) mounted for installation outside of the fire zone.

■ Safety information

Protection against accidental contact for impeller must be ensured pursuant to DIN EN ISO 13857.

■ Centrifugal cooling air fan

The centrifugal cooling air fan B KLG is a required accessory for ensuring motor cooling. Alternative forced ventilation fan upon request. Minimum cooling air flow rate $V = 850 \text{ m}^3/\text{h}$.

■ Certification

The smoke extraction fans B VARD have been tested according to DIN EN 12101-3. Certificate of performance reliability:
F600: 0036-CPR-RG05-02

■ Information Page

Techn. description	84 f.
Project planning information	13 ff.

■ Accessory details

Mounting accessories	161 ff.
Centrif. cooling air fan	160
Gas warning systems, switch and control technology	168 ff.

Type	Ref. no.	Speed	Output free-blowing	Norm. motor power. (output)	Nominal voltage	Power consumption	Wiring diagram	max. air flow temp. ¹⁾	Net weight approx.	Smoke exhaust fan control system incl. full motor protection		Anti-vibration mount ²⁾						
										Type	Ref. no.	Pressure	Tensile	Type	Ref. no.	Type	Ref. no.	
F600 Three phase motor, 50 Hz, protection class IP54																		
B VARD 900/4 F600	02873	1480	50000	37.0	400	66.8	776	600	655	EVS-SD 036	04550	SDD 8	01930	SDZ 8	01931			

¹⁾ Smoke extraction (once 120 min.).

²⁾ Types SDZ not permitted for installation within fire zone.