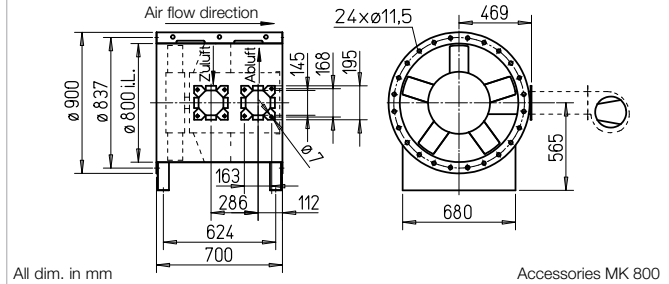


**B AVD 800**



**Dimensions B AVD 800**



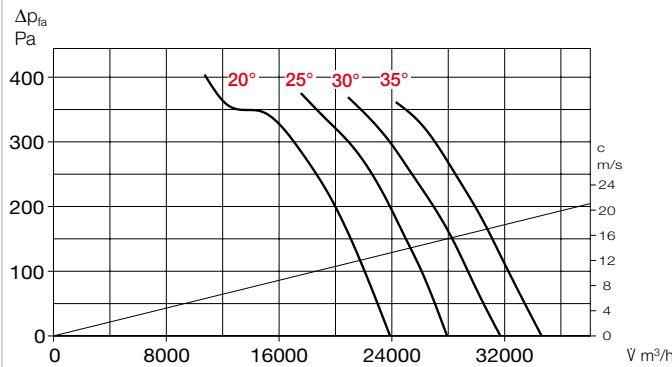
All dim. in mm

Accessories MK 800

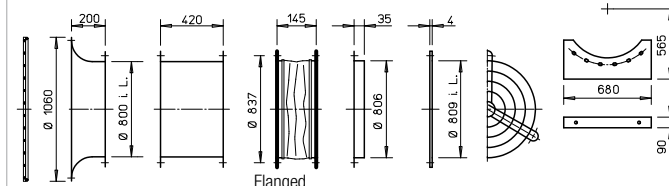
**Performance curves B AVD 800/4**

Frequency		Hz	Total	125	250	500	1k	2k	4k	8k
L <sub>WA</sub>	20°	dB(A)	100	81	92	94	92	91	83	75
L <sub>WA</sub>	30°	dB(A)	102	83	94	96	94	93	85	77
L <sub>WA</sub>	35°	dB(A)	103	84	95	97	95	94	86	78

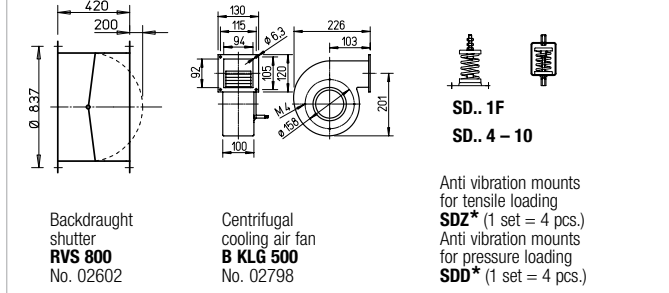
n = 1450 1/min



**Accessories for B AVD 800**



- Bell mouth + guard: **ASD-SGD 800**, No. 01424
- Extension duct: **VR 800**, No. 01412
- Flanged flex. connector: **STSB 800 F600**, No. 02007
- Counter flange: **FR 800**, No. 01198
- Flat flange: **FF 800**, No. 04951
- Guard duct-side: **SG 800**, No. 01245
- Mounting brackets: **MK 800**, (1 set = 2 pcs.), No. 01373



- Backdraught shutter: **RVS 800**, No. 02602
- Centrifugal cooling air fan: **B KLG 500**, No. 02798
- SD.. 1F
- SD.. 4 - 10
- Anti vibration mounts for tensile loading: **SDZ\*** (1 set = 4 pcs.)
- Anti vibration mounts for pressure loading: **SDD\*** (1 set = 4 pcs.)

\* Type assignment see table, last column

**■ Certification**

The smoke and heat exhaust fans B AVD have been tested according to DIN EN 12101-3. Certificate of conformity: F600: 0036-CPR-RG05-04

**■ Information Page**

Techn. description	26 f.
Project planning information	13 ff.
<b>■ Accessory details</b>	
Mounting accessories	158 ff.
Centrif. cooling air fan	160
Gas warning systems, switch and control technology	168 ff.

Type	Ref. no.	Speed	Air flow volume (FID)	Motor pow. nom. (output)	Nominal voltage	Power consum. nom.	Pitch angle	Wiring diagram	Max. air flow temp. <sup>1)</sup>	Dim. B Motor protrusion	Net weight approx.	Pole switch surface-mounted		Anti-vibration mounts NG			
												Type	Ref. no.	Pressure	Tensile <sup>2)</sup>	Type	Ref. no.
		min <sup>-1</sup>	V m <sup>3</sup> /h	kW	V	A	°	No.	+°C	mm	kg	Type	Ref. no.	Type	Ref. no.	Type	Ref. no.
<b>F600</b> 3 phase motor, 50 Hz, protection class IP54																	
<b>B AVD 800/4-20 F600</b>	02855	1440	23380	3.00	400	6.15	20	776	600	—	151	<b>EVS-SD 024</b>	04563	<b>SDD 5</b>	01924	<b>SDZ 5</b>	01925
<b>B AVD 800/4-25 F600</b>	02856	1450	27720	4.00	400	8.03	25	776	600	—	160	<b>EVS-SD 024</b>	04563	<b>SDD 5</b>	01924	<b>SDZ 5</b>	01925
<b>B AVD 800/4-30 F600</b>	02857	1460	31920	5.50	400	10.40	30	776	600	—	181	<b>EVS-SD 025</b>	04562	<b>SDD 5</b>	01924	<b>SDZ 5</b>	01925
<b>B AVD 800/4-35 F600</b>	02858	1460	35010	7.50	400	13.90	35	776	600	—	190	<b>EVS-SD 026</b>	04561	<b>SDD 5</b>	01924	<b>SDZ 5</b>	01925

<sup>1)</sup> Smoke extraction (one time 120 min.). <sup>2)</sup> Types SDZ not permitted for installation in fire zone.