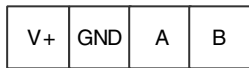
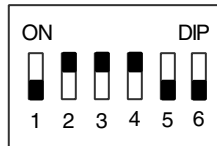


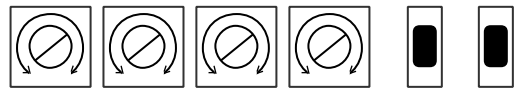
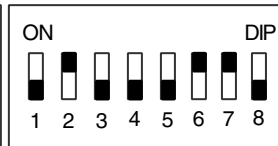
Anschlussplan: siehe
ss_1433 in der
Montage- und
Betriebsvorschrift
Ihres Gerätes.



MODE



ADDRESS



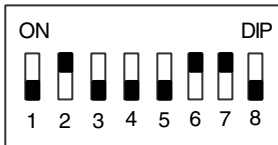
VOC
offset

VOC
zero

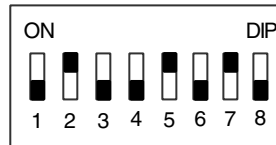
Insgesamt maximal 6 KWL-CO2 eC + KWL-VOC eC
möglich. Bitte Anschlussplan ss_1433 beachten.

Modbus Adressbereich VOC / CO2 70 - 75

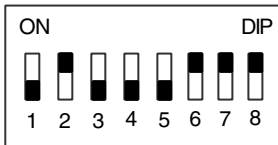
Jede Adresse darf nur einmal
verwendet werden



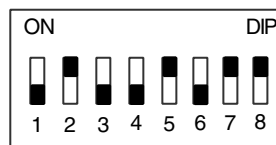
Default Einstellung:
Entspricht 70



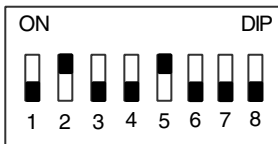
Entspricht 74



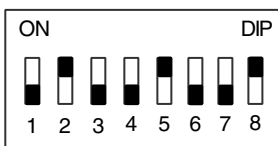
Entspricht 71



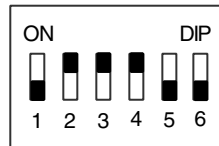
Entspricht 75



Entspricht 72

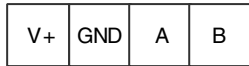
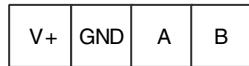


Entspricht 73



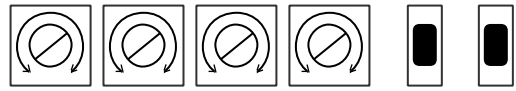
Mode: Interne Einstellung
nicht verändern

Wiring diagram:
see ss_1433 in the
installation and
operating
instructions for
your unit.



MODE

ADDRESS



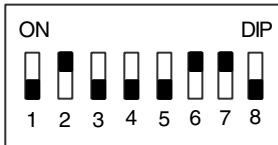
VOC
offset

VOC
zero

Maximum total of 6 KWL-CO2 eC + KWL-VOC eC possible. Please observe wiring diagram ss_1433.

**Modbus address range VOC / CO2
70 - 75**

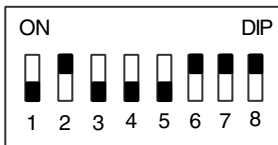
Each address may only be used once



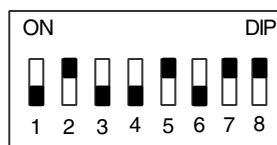
Default setting:
Corresponds to 70



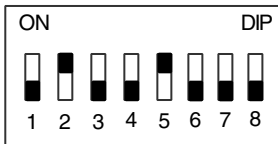
Corresponds to 74



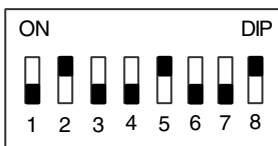
Corresponds to 71



Corresponds to 75



Corresponds to 72

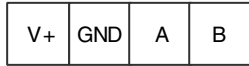
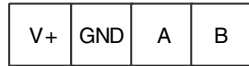


Corresponds to 73



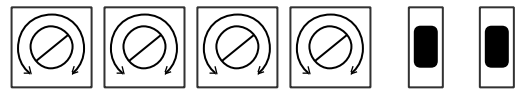
Mode: Do not change
internal setting

Schéma de câblage :
voir ss_1433 dans
les instructions
d'installation et
d'utilisation de votre
appareil.



MODE

ADDRESS



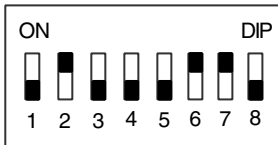
VOC
offset

VOC
zero

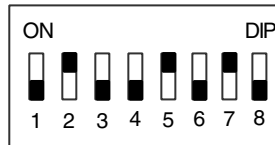
Un total de maximum 6 KWL-CO2 eC + KWL-VOC eC
possible. Veuillez observer le schéma de connexion
ss_1433.

**Gamme d'adresses Modbus VOC / CO2
70 - 75**

Chaque adresse ne peut être utilisée
qu'une seule fois



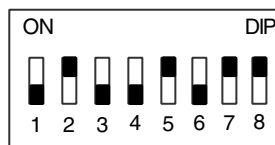
Réglage par défaut :
Correspond à 70



Correspond à 74



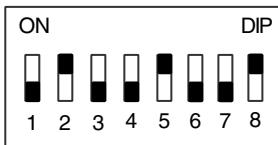
Correspond à 71



Correspond à 75



Correspond à 72



Correspond à 73



Mode : Ne pas modifier le
réglage interne