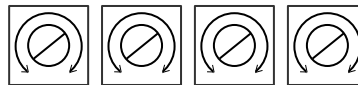
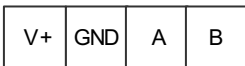
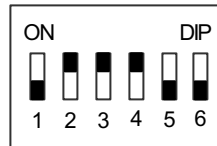


MODE

ADDRESS



°C r.H.
offset

Insgesamt maximal 6 KWL-FTF eC Sensoren möglich. Bitte Anschlussplan ss_1433 beachten.

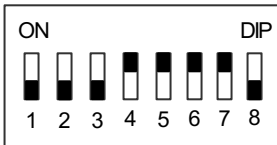
Maximum of 6 KWL-FTF eC sensors possible. Please observe wiring diagram ss_1433.

Un total de 6 capteurs eC KWL-FTF maximum est possible. Veuillez observer le schéma de connexion ss_1433.

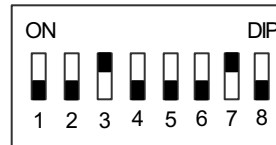
Modbus Adressbereich Feuchte 30 - 35 (Jede Adresse darf nur einmal verwendet werden)

Modbus address range humidity 30 - 35 (Each address may only be used once)

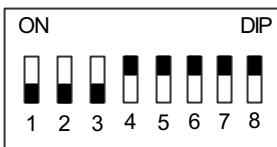
Gamme d'adresses Modbus Humidité 30 - 35 (Chaque adresse ne peut être utilisée qu'une seule fois)



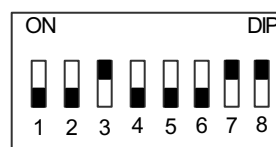
Entspricht 30 (Standardeinstellung)
Corresponds to 30 (default setting)
Correspond à 30 (Réglage par défaut)



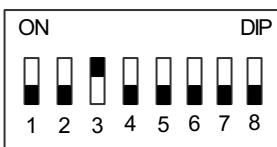
Entspricht 34
Corresponds to 34
Correspond à 34



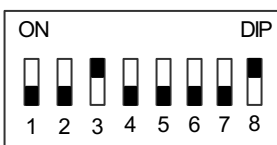
Entspricht 31
Corresponds to 31
Correspond à 31



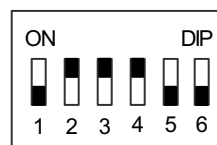
Entspricht 35
Corresponds to 35
Correspond à 35



Entspricht 32
Corresponds to 32
Correspond à 32



Entspricht 33
Corresponds to 33
Correspond à 33



Mode:
Interne Einstellung nicht verändern
Do not change internal setting
Ne pas modifier le réglage interne